

NiceLabel 2019 Installation Guide

Rev-2019-2 ©NiceLabel 2019.

1 Contents

1 Contents	2
2 System Requirements	4
2.1 NiceLabel 2019	4
2.2 Additional Requirements for NiceLabel Control Center and NiceLabel PowerForms Web Components	4
3 Setup Procedure	6
3.1 Introductory Setup Steps	6
3.2 Free Trial Setup	9
3.3 Setup with NiceLabel Label Cloud Subscription	11
3.4 Setup with License Key Or Hardware Key	15
3.5 Post-trial Options	17
3.6 Version Update	18
3.7 Enforcing Configuration Options	20
4 NiceLabel 2019 Licensing	21
4.1 License Activation	21
4.1.1 License Activation Dialog	21
4.1.2 Offline Activation	22
4.2 License Upgrade	25
4.2.1 Upgrade Types	26
4.2.2 Product Edition Upgrade	26
4.2.3 Version Upgrade	26
4.2.3.1 Upgrading the existing installation	27
4.2.3.2 Installing and activating NiceLabel 2019 with upgrade key	28
4.2.4 Upgraded Number of Printers	29
4.2.5 Offline Upgrade	29
5 Installation of Printer Drivers	32
5.1 Printer Driver Installation Using PrnInst	32
5.2 Printer Driver Installation using Windows Installer	36
5.2.1 Plug-and-Play Driver Setup	36
5.2.2 Printer Driver Available on Windows Update Site	37

5.2.3 Printer Driver Unavailable on Windows Update Site – Manual Printer Driver Installation	37
6 Deactivating Software	39
6.1 License Deactivation Procedure	39
6.2 Moving the Software License to Another Computer	40
6.2.1 Moving Hardware Activation	40
6.2.2 Moving Software Activation	40
7 Online Support	41

2 System Requirements

NOTE: Always double-check for the latest system requirements at this web page: <https://www.nicelabel.com/products/specifications/system-requirements>.

2.1 NiceLabel 2019

- CPU: Intel or compatible x86 family processor
- Memory: 2 GB or more RAM
- Hard drive: 1 GB of available disk space
- 32-bit or 64-bit Windows operating systems: Windows Server 2008 R2, Windows 7, Windows 8, Windows 8.1, Windows Server 2012, Windows Server 2012 R2, Windows 10, Windows Server 2016, Windows Server 2019 (Windows Server Core and Windows Nano Server not supported)
- At least one printer driver installed on the computer
- Microsoft .NET Framework Version 4.5.2
- Display: 1366×768 or higher resolution monitor
- Recommended printer drivers: NiceLabel printer driver V5.1 or higher

2.2 Additional Requirements For NiceLabel Control Center And NiceLabel PowerForms Web Components

- OS: "Home" editions of Windows operating system not supported
- Database Server: Microsoft SQL Server 2005, Microsoft SQL Server 2008, Microsoft SQL Server 2012, Microsoft SQL Server 2014, Microsoft SQL Server 2016 (Express Edition of products listed above are also supported)
- IIS 7 or later
- Recommended browsers: Internet Explorer 9+, Google Chrome (latest), Mozilla Firefox (latest)
- Enabled JavaScript in web browser
- Installed at least one printer driver. The label preview functionality requires at least one printer driver to be installed on the Control Center server.

- Enabled TLS 1.0 protocol in Windows. By default, this protocol is enabled in Windows operating system. If you have it disabled, make sure to re-enable it during the installation.

3 Setup Procedure

TIP: Information in this section is valid for the following NiceLabel 2019 modules: Designer Express, Designer Pro, Designer PowerForms, Print and Automation.

Use the setup wizard to install NiceLabel 2019 labeling software on your computer. NiceLabel 2019 can be installed as a fully functional software using a purchased license key, or as a free trial version. Trial version allows unlimited use of any product included in the installation package for 30 days.

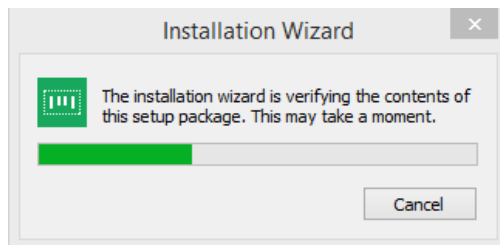
To install the software, complete the steps that are described in the below listed sections:

- [Introductory Setup Steps](#)
- [Free Trial Setup](#)
- [Setup with Label Cloud license](#)
- [Setup with License Key Or Hardware Key](#)
- [Post-trial Options](#)

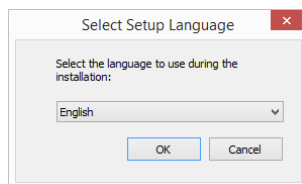
3.1 Introductory Setup Steps

Complete these steps to install NiceLabel 2019 on your computer.

1. Download the software package or insert the DVD into your DVD drive. Run **NiceLabel2019.exe**. Installer verifies the installation package content.



2. Select installation language from the drop-down list and click **OK**.

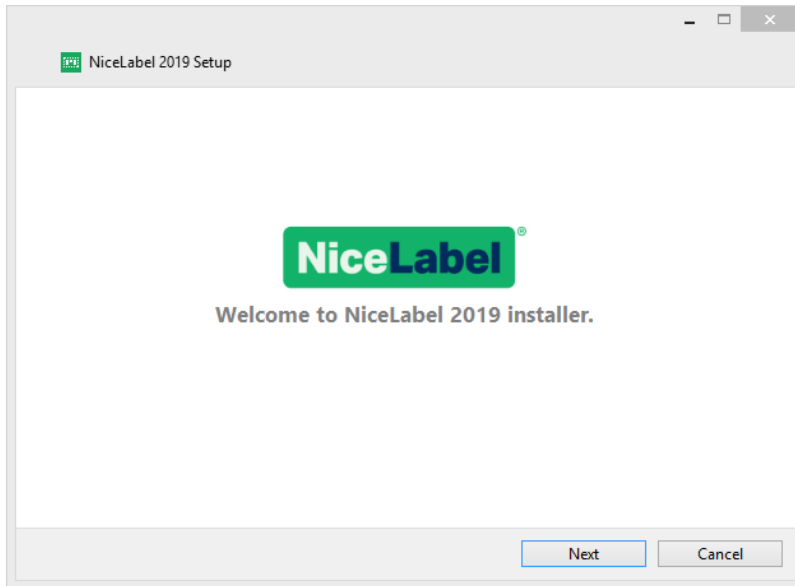


NOTE: Language selection determines the interface language of the installed NiceLabel 2019 program.

3. NiceLabel 2019 Setup dialog window opens automatically.

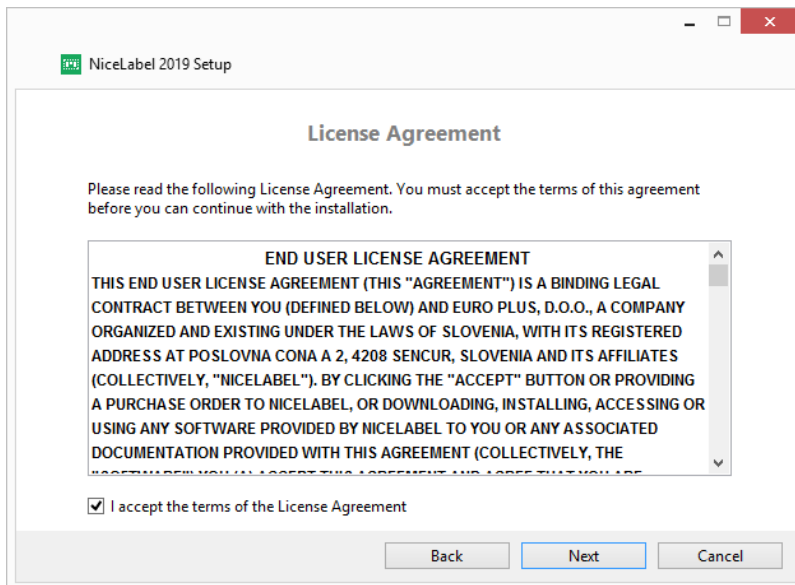
Click **Next**.

NOTE: If the installation wizard does not start automatically, double-click **NiceLabel2019.exe** in the downloaded file package or in the DVD file folders.



2. Read and accept the **End User License Agreement**.

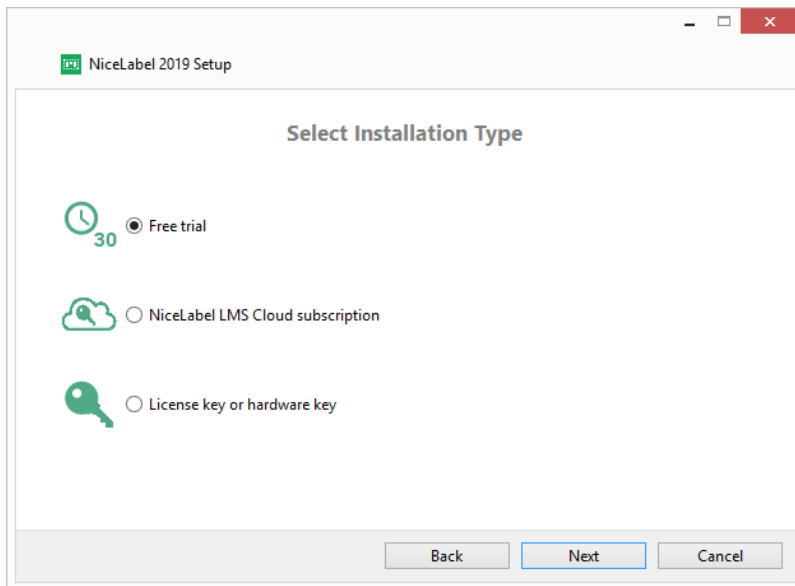
Click **Next**.



3. Select installation type. These options are available:

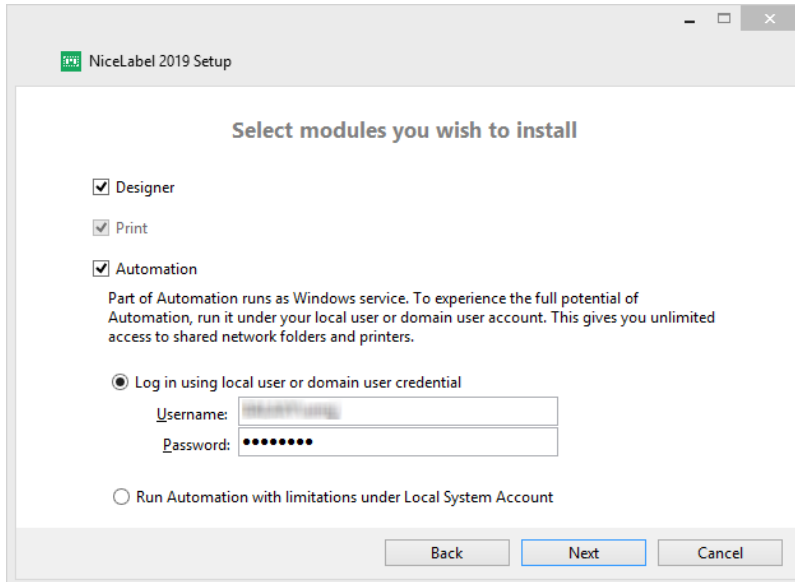
- [Free Trial Setup](#). Free trial allows you to use and evaluate the software for 30 days. After the completed trial period, you have to purchase and enter the license key to continue with your work.

- [NiceLabel Label Cloud](#) subscription. This option installs NiceLabel 2019 on your computer and establishes connection with Label Cloud.
- [Setup with License Key Or Hardware Key](#). Use this option if you have already purchased and received the product license key. The entered license key determines which product edition of the installed NiceLabel 2019 software is going to be fully functional after the finished setup.



3.2 Free Trial Setup

1. Complete the [Introductory Setup Steps](#).
2. Select the modules you wish to install.



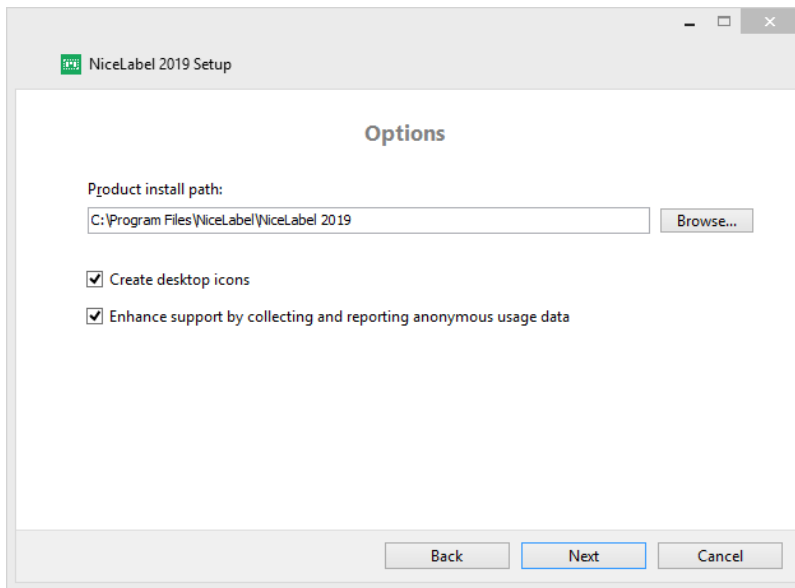
3. Select how you are going to run Automation.

TIP: This step is necessary only if you decide to install NiceLabel Automation.

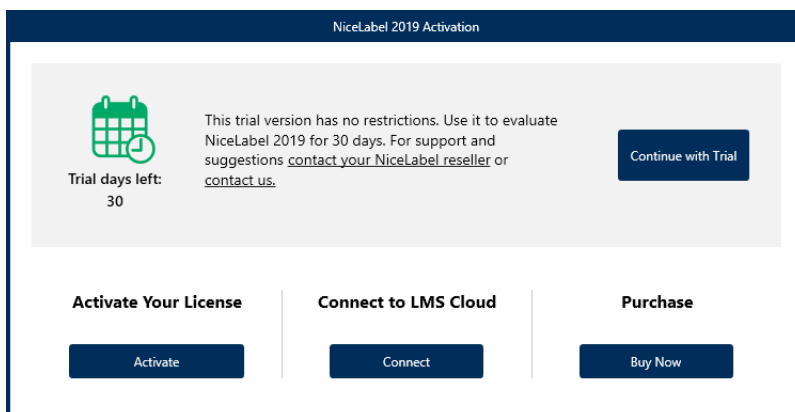
Type in the account under which the Windows services are going to run. Make sure you use an account with access to printer drivers and label files. These files must be accessible even if they belong to network shared resources.

NOTE: We recommend using standard or administrative user accounts. The Local System Account has limited access to network shared files and printers. It requires additional work when setting up printers to make them work correctly.

4. Define the installation path and decide if you want to share your usage data with NiceLabel or not. Anonymous usage data helps NiceLabel improve the applications and therefore increase your productivity.

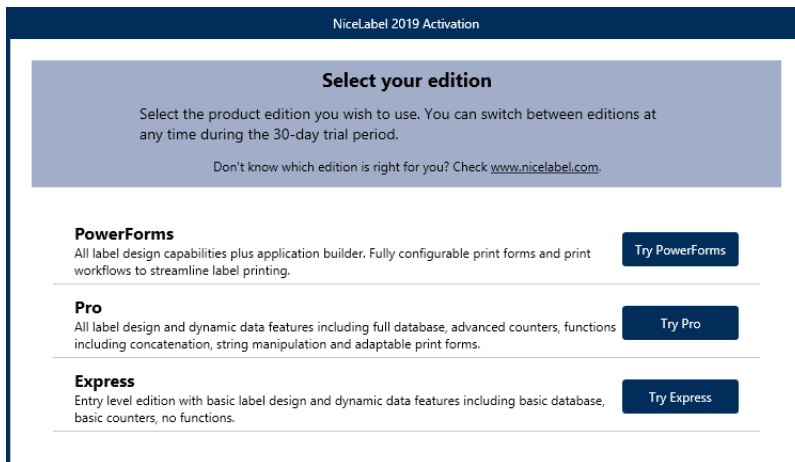


5. Click **Next** to continue. You are ready to install NiceLabel 2019.
6. Start the installation. Click **Install**.
7. Run NiceLabel 2019. The initial trial dialog window opens:



These options are available:

- Click **Continue with Trial** to start with your 30 days trial period.
 - Click **Activate** to activate your purchased license. [Activation dialog](#) opens in this case. Activation enables you to start using the software without time limitations.
 - Click **Connect** to connect your NiceLabel 2019 client to the Label Cloud. You will have to sign in to the cloud using your Microsoft or Google account.
 - Click **Buy Now** button under **Purchase** option to purchase the product online. You will be redirected to NiceLabel online store.
8. After clicking **Continue Free Trial**, the NiceLabel Designer product level selection dialog window appears:



9. Select which product level you wish to evaluate:

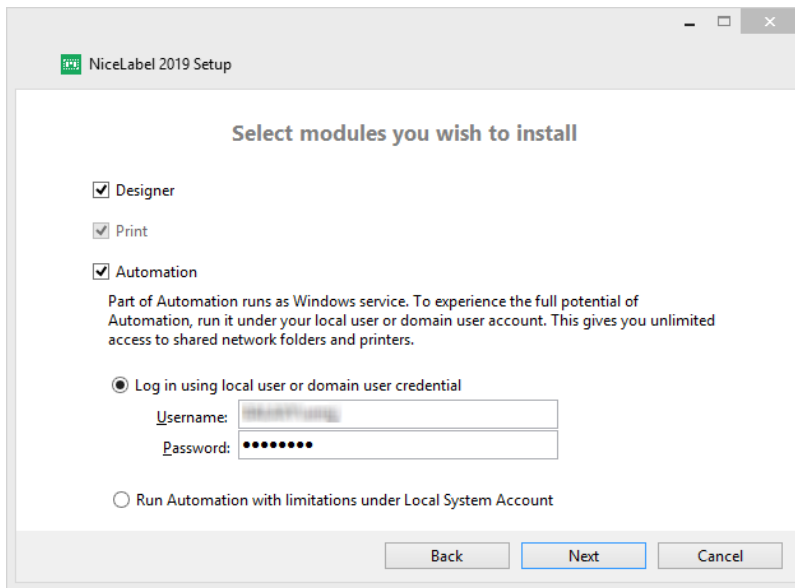
- **PowerForms** allows you to design responsive labels and print forms that streamline printing and eliminate errors. This is the most comprehensive product level with the richest feature set.
- **Pro** allows you to design and print responsive labels with dynamic content. For demanding users.
- **Express** allows you to quickly design and print universal label templates. Simplicity and efficiency are the main characteristics of this product level.

10. Click the **Continue Evaluating** button. NiceLabelDesigner landing page opens.

3.3 Setup With NiceLabel Label Cloud Subscription

If you are planning to use the NiceLabel 2019 as a part of Label Cloud, make sure you already have your Label Cloud account. Details on how to sign up to your Label Cloud are available in NiceLabel Label Cloud – Getting Started.

1. Complete [Introductory Setup Steps](#).
2. Select the modules you wish to install.



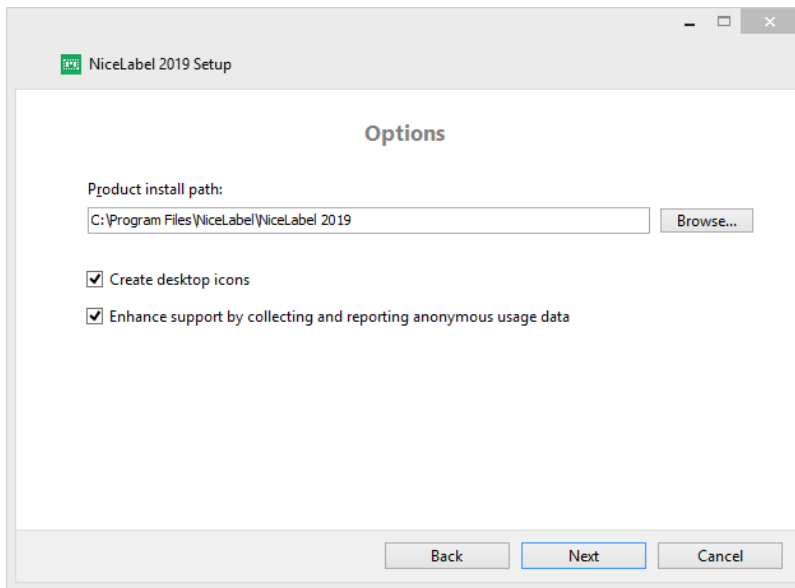
3. Select how you are going to run Automation.

TIP: This step is necessary only if you decide to install NiceLabel Automation.

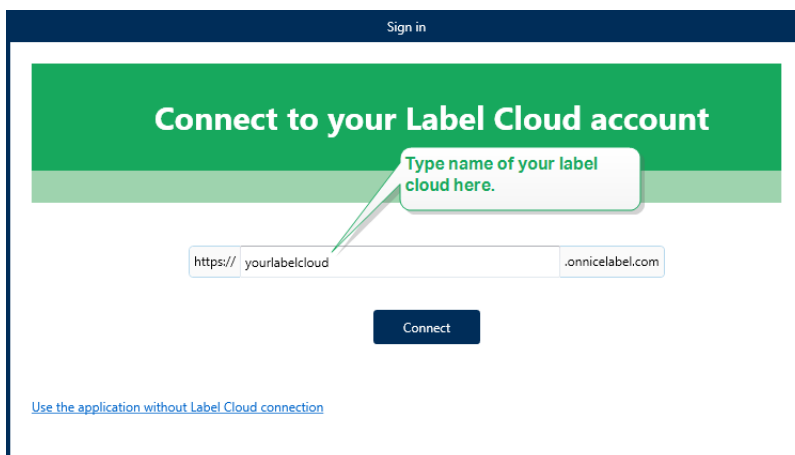
Type in the account under which the Windows services are going to run. Make sure you use an account with access to printer drivers and label files. These files must be accessible even if they belong to network shared resources.

NOTE: We recommend using standard or administrative user accounts. The Local System Account has limited access to network shared files and printers. It requires additional work when setting up printers to make them work correctly.

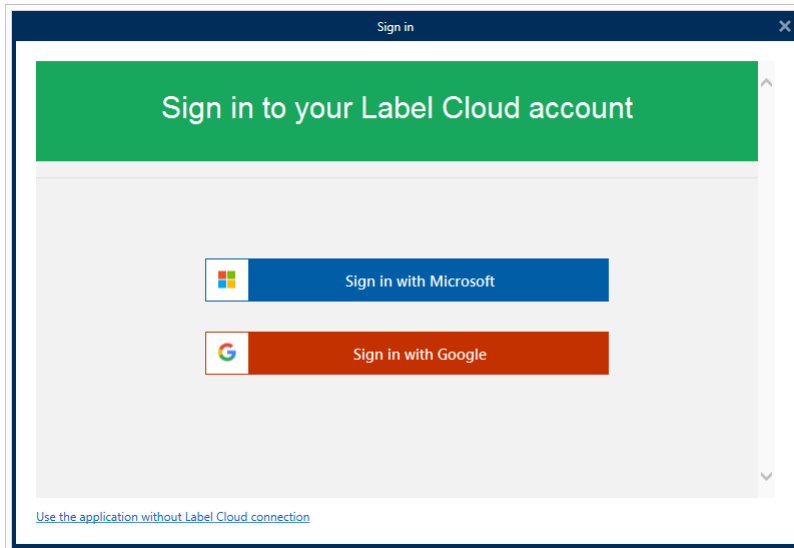
4. Define installation path and decide if you want to share your usage data with NiceLabel or not. Anonymous usage data helps NiceLabel improve the applications and therefore increase your productivity.



5. Click **Next**. You are ready to start installing your NiceLabel 2019.
6. Click **Install**. The installation starts.
7. When the installation completes, click **Close**.
8. Run NiceLabel 2019. The Label Cloud Sign in window opens.
9. Type your label cloud name and click **Connect**.



10. Sing in to your label cloud using Microsoft or Google account. This is the account using which you signed up to the Label Cloud.



11. Follow the on-screen instructions. Your NiceLabel 2019 connects to the Label Cloud. You are ready to start designing labels and solutions.

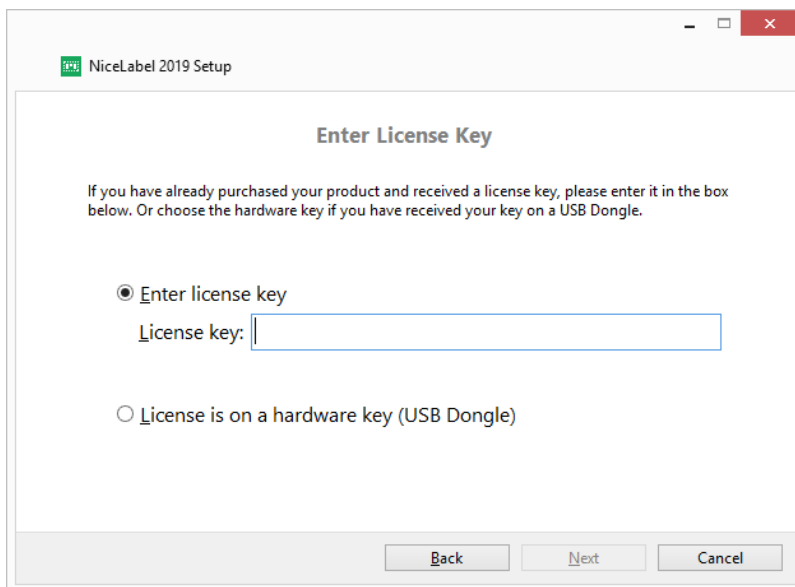
3.4 Setup With License Key Or Hardware Key

1. Complete the [Introductory Setup Steps](#).
2. Enter your **License key**. Your license key is included in the email that was sent to you after completing the purchase or in the product package.

The alternative is to select **License is on a hardware key** option. An additional way of distributing the license keys is sending them on USB drives.

USB drive carries licensing information for your copy of NiceLabel 2019. Plug the USB drive to your computer and click **Next**.

NOTE: Hardware key can only be used for single user licenses. As a result, only Designer module is installed during a hardware key setup of NiceLabel 2019.



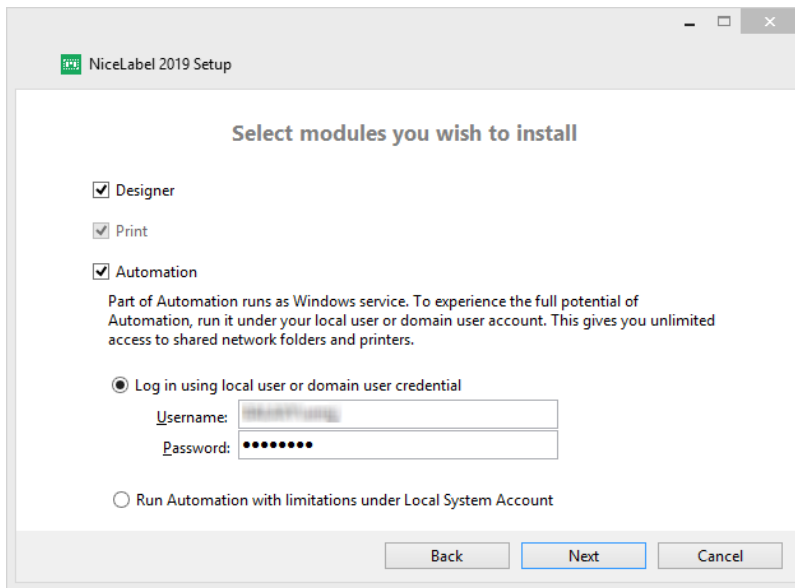
The screenshot shows a window titled "NiceLabel 2019 Setup" with a sub-header "Enter License Key". Below the sub-header, there is a paragraph of text: "If you have already purchased your product and received a license key, please enter it in the box below. Or choose the hardware key if you have received your key on a USB Dongle." There are two radio button options: "Enter license key" (which is selected) and "License is on a hardware key (USB Dongle)". Under the selected option, there is a text input field labeled "License key:". At the bottom of the window, there are three buttons: "Back", "Next", and "Cancel".

TIP: In specific deployment cases – i.e. when installing NiceLabel 2019 in multi-user environments – license key can be read from the installation file name. To achieve this, rename the installation file using the following format: **Setup_XXXX-XXXXX-XXXXX-XXXXX-XXXXX.exe** ("X" marks the license key characters). NiceLabel 2019 is automatically configured to use this license.

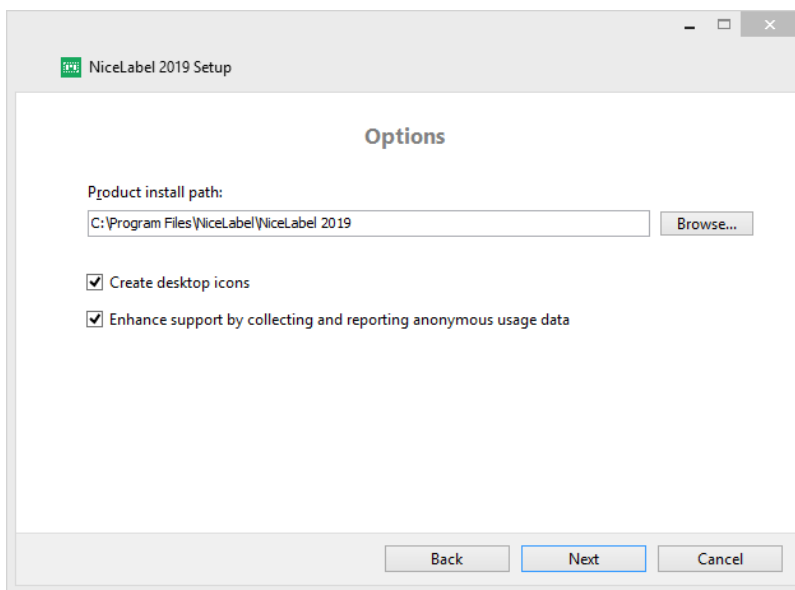
NOTE: The Automation module is deselected by default if you install NiceLabel 2019 using a hardware key.

NOTE: The previously entered license key determines which product levels run in trial mode and which without time limitations. It also defines which NiceLabelDesigner product level (Express, Pro or PowerForms) is available for use.

3. Select the modules you wish to install.

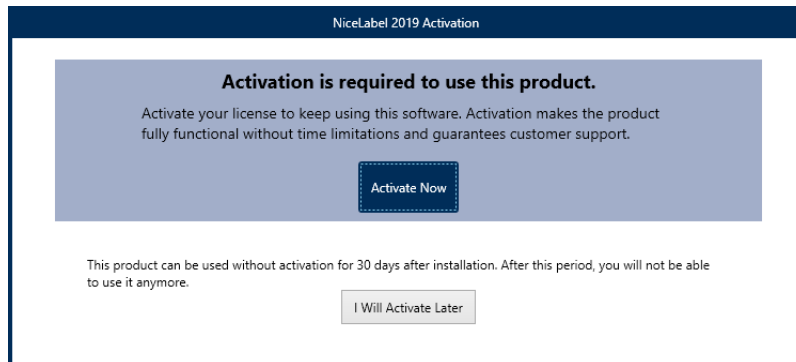


4. Define installation path and decide if you want to share your usage data with NiceLabel or not. Anonymous usage data helps NiceLabel improve the applications and therefore increase your productivity.



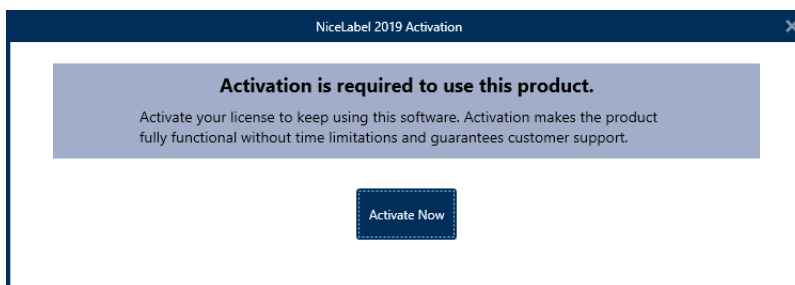
5. Click **Next** to continue. You are ready to install NiceLabel 2019.
6. Click **Install**. The installation begins.
7. Run NiceLabel 2019. The following options appear:
 - Click **Activate Now** to enter the [License Activation Dialog](#) and to activate your copy of software immediately (recommended).
 - Click **I Will Activate Later** button under the **Proceed Without Activation** option.

You will be allowed to use the software without limitations for 30 days. Step number 7 below describes the options if no activation takes place in 30 days.



NOTE: Activation is required to work with the software without time limitations. It also enables NiceLabel company to provide you with customized support and help.

8. After 30 days without activation, you will be prompted to activate your NiceLabel 2019 license.

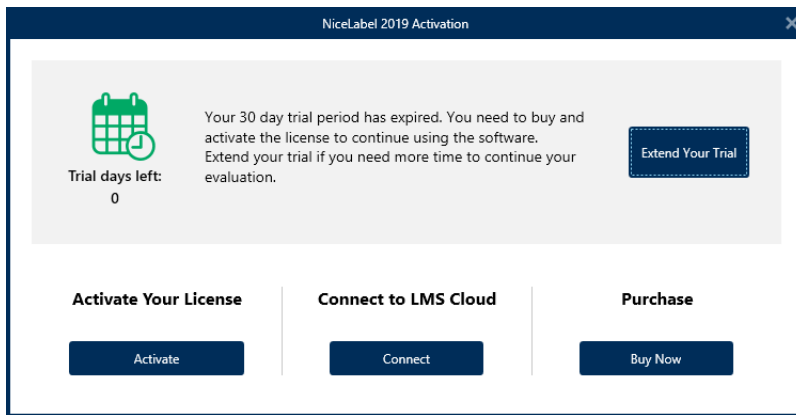


Click **Activate Your License** to proceed to the [License Activation Dialog](#).

NOTE: If NiceLabel 2019 has been installed with a predefined product level (a specific installer file has been used), product level selection is not required during first start.

3.5 Post-trial Options

Free trial allows you to use and evaluate the software for 30 days. After 30 days, trial period ends. This means that you can no longer use NiceLabel 2019 software without purchasing the license and activating the license key.



When opening NiceLabel 2019 in post-trial time period, the below displayed dialog window appears. The following options are available:

- Click **Extend Your Trial** to prolong the trial period if you need additional time to evaluate the software. Click **Extend Your Trial** to fill out an online form. NiceLabel support will inform you about the trial extension in the shortest possible amount of time.
- Click **Activate** to activate the purchased license. Click **Activate Your License** to proceed to the [License Activation Dialog](#) and to start using the software without time limitations.
- To connect to Label Cloud, click **Connect**. The cloud **Sign in** window opens. Type in the address of your Label Cloud. Sign in using your Microsoft or Google account.
- Click **Buy Now** button under **Purchase** option to purchase the product online. You will be redirected to NiceLabel online store.

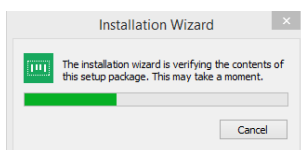
3.6 Version Update

The set of NiceLabel 2019 features is constantly expanding. NiceLabel recommends you to always install and use the latest available version of NiceLabel 2019. To achieve this, update your existing installed version with the latest one. New versions are regularly published and distributed.

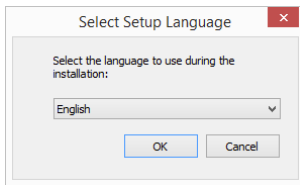
TIP: When updating to the latest version, do not remove the existing version of NiceLabel 2019 manually. The update process removes it automatically and seamlessly installs the latest version. Licensing data is retained and the application is ready to use.

Complete these steps to update your existing version of NiceLabel 2019.

1. Download the software package or insert the DVD into your DVD drive. Run **NiceLabel2019.exe**. Installer verifies the installation package content.

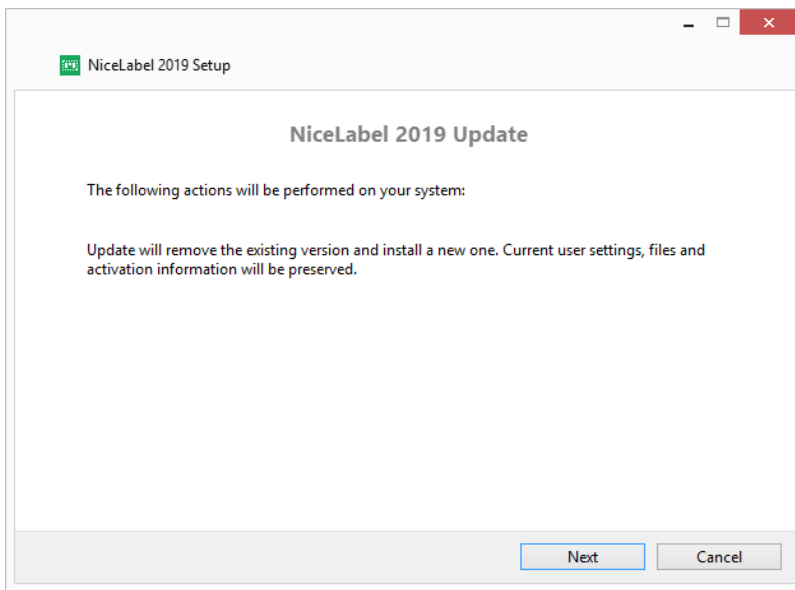


2. Select installation language from the drop-down list and click **OK**.

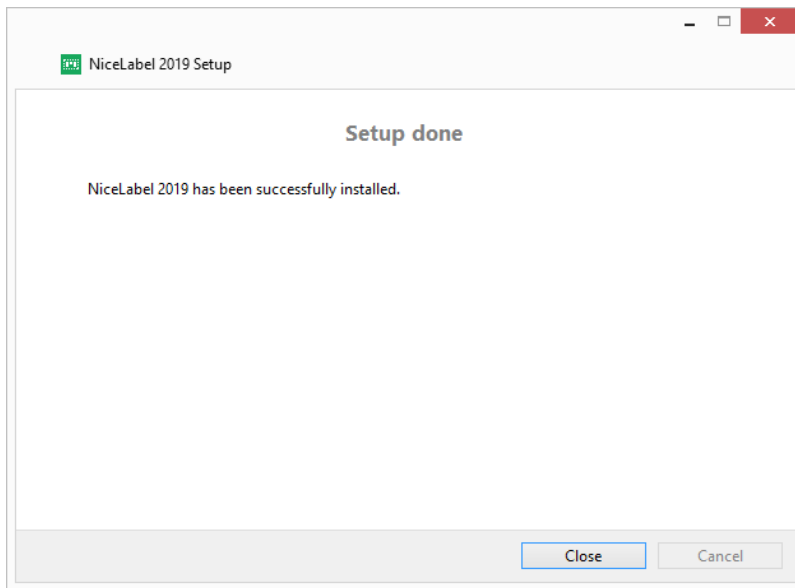


NOTE: Language selection determines interface language of the installed NiceLabel 2019.

3. NiceLabel 2019 Update window appears. Click **Next**.



4. Installer automatically removes existing and installs the new version.
5. When done, the installer confirms that the latest version is successfully installed. Click **Close** and continue with your work.



3.7 Enforcing Configuration Options

Certain application configuration parameters can be stored and retrieved during the installation procedure from the **product.config** file. This is an XML file that among others stores the parameters for language selection, directories, usage tracing, licensing information, and global variables.

NOTE: After the installation of NiceLabel 2019, **product.config** file is stored in folder `c:\ProgramData\NiceLabel\NiceLabel 2019\`.

The **product.config** file allows you to enforce configuration setting as the application is being installed. Use the **product.config** file from a computer with already installed NiceLabel 2019 and deploy it on additional computers.

To do so, follow the steps below:

1. Open NiceLabel 2019 Designer.
2. Set the application configuration options (go to **File > Options**) and close it.
3. Copy the **product.config** file from `c:\ProgramData\NiceLabel\NiceLabel 2019\` next to the installation executable.
4. Run setup. The **product.config** file is automatically copied to the `c:\ProgramData\NiceLabel\NiceLabel 2019\` folder.

NOTE: Configuration options that relate to a specific user profile, override the parameters from **product.config** file.

4 NiceLabel 2019 Licensing

There are two licensing models available for NiceLabel 2019:

1. **Single-user license** grants the end-user the right to use one instance of NiceLabel 2019 on a single workstation. In this licensing model, the end-user is allowed to use an unlimited number of printers from the workstation with the activated copy of NiceLabel 2019 license. Each workstation must be activated with its own unique license key. You must obtain as many license keys as necessary to cover the number of your workstations.
2. **Multi-user license** allows installation and usage of unlimited instances of NiceLabel 2019 on an unlimited number of workstations. In this licensing model, the number of printer seats is limited. The end-users are allowed to use as many printers as purchased with the respective NiceLabel product.

TIP: Details about NiceLabel 2019 licensing are available in a [dedicated document](#).

4.1 License Activation

TIP: Information in this section is valid for the following NiceLabel 2019 modules: Designer Express, Designer Pro, Designer PowerForms, Print and Automation.

Only activated copy of NiceLabel 2019 software allows you to work with included modules without time limitations.

You receive the license key after purchasing the software from NiceLabel online store or from any of NiceLabel software distributors. To activate your copy of NiceLabel 2019, open the [License Activation Dialog](#) and use the received license key.

NOTE: By activating your copy of NiceLabel 2019, the software also becomes registered. Registration guarantees full customer support as defined in the product license agreement.

With any NiceLabel 2019 product open, the [License Activation Dialog](#) window appears after clicking the **Activate your License** button in Designer or Automation **Home tab ribbon > Trial group** or in **File tab > About**.

4.1.1 License Activation Dialog

To activate and register your NiceLabel 2019 license, complete the following steps:

1. Activate the license activation dialog in **File > About > Activate Your License**. Dialog window contains the following edit fields:

- **License Key:** Copy and paste the 25-digit key that you received after purchasing the software.

NOTE: After purchasing the Runtime license, you only activate this license type in NiceLabel Print. If you try to activate Runtime license in Designer or Automation, the license is not recognized as valid.

- **Name:** Type your name. The name is used when addressing possible support issues and also used to identify the owner of label or solution design.
- **Company:** Company name helps identify upgrade requests and possible support issues.
- **Country:** Defines macro location of the company HQ or its office.
- **Email:** User email used for support purposes or addressing possible issues.
- **Notify me about future software updates:** Keeps you informed about the regular updates of NiceLabel 2019 products.

2. When done with entering the required information, click **Activate Your License**. The activated NiceLabel 2019 product becomes fully functional in accordance with the provided license key.

4.1.2 Offline Activation

TIP: Use this option when activating NiceLabel 2019 on a computer without Internet connection.

1. Click the **activate offline** link. The activation dialog window expands.

Nicelabel 2019 Activation

Enter the information below to activate your product.

License Key:

Multiple licenses were discovered on the network. [Select an existing](#) license key or enter a new one.

Name:

Company:

Country:

Email:

Notify me about software updates

By submitting this form you agree to our [Privacy policy](#).

Internet connection is required for online product activation. Click [activate offline](#) if the Internet connection is not available.

Now, it includes two additional fields – **Registration Code** and **Activation Code**.

Nicelabel 2019 Activation

Enter the information below to activate your product.

License Key:

Multiple licenses were discovered on the network. [Select an existing](#) license key or enter a new one.

Name:

Company:

Country:

Email:

Notify me about software updates

Registration Code:

Activation Code:

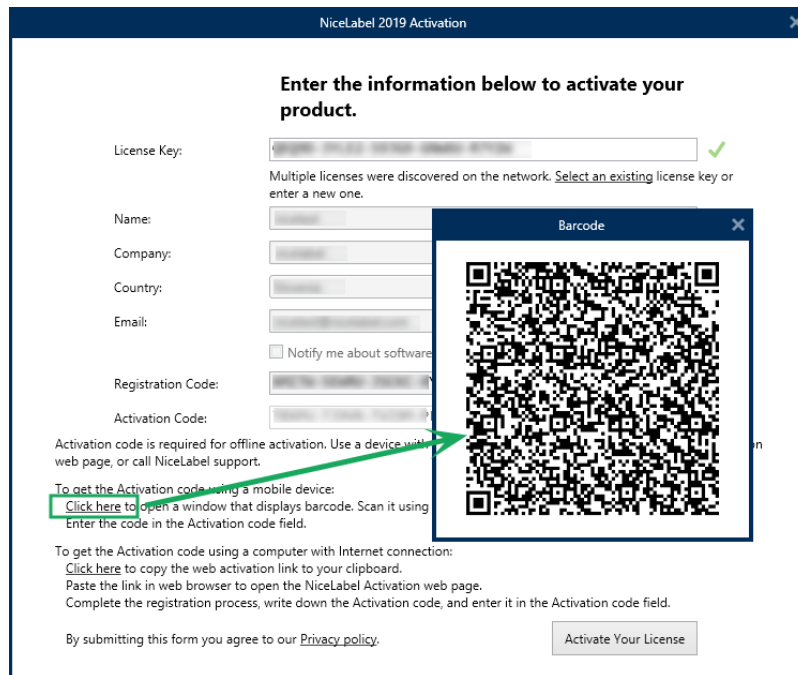
Activation code is required for offline activation. Use a device with Internet connection to get the key on Nicelabel Activation web page, or call Nicelabel support.

To get the Activation code using a mobile device:
[Click here](#) to open a window that displays barcode. Scan it using a mobile device with Internet access.
Enter the code in the Activation code field.

To get the Activation code using a computer with Internet connection:
[Click here](#) to copy the web activation link to your clipboard.
Paste the link in web browser to open the Nicelabel Activation web page.
Complete the registration process, write down the Activation code, and enter it in the Activation code field.

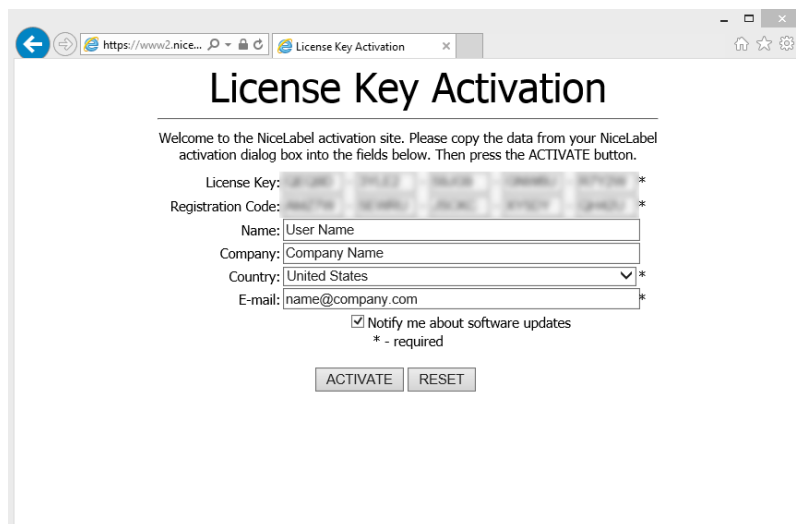
By submitting this form you agree to our [Privacy policy](#).

- **Registration code** generates the **Activation code** on the dedicated Nicelabel **License Key Activation** web page. This page is accessible in two ways:
 1. **License Key Activation** web page is accessible via barcode. Click the link in first paragraph to open a separate window with the code. Scan it using a mobile device with Internet connection and you will be directed to the web page using your mobile browser. Enter the received Activation code (see image below) in the matching field of Nicelabel 2019 activation dialog.



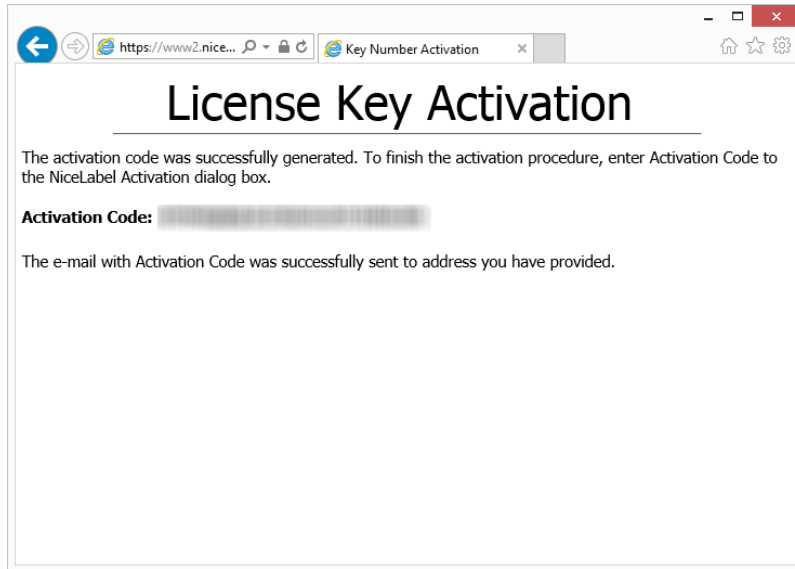
2. To access the License Key Activation web page on another computer with Internet access, click the link in the second paragraph. This action copies the **License Key Activation** web page link to the clipboard. Open this link on a computer with Internet connection.

After the activation web page opens, the fields with information about your license are automatically populated.



Click **Activate** to generate the **Activation Code**.

Use **Activation Code** on the computer without Internet access to activate the software.



NOTE: Do not close the license activation dialog while obtaining the **Activation Code** on another computer with Internet access. If you close it, you will have to repeat the procedure with a new **Registration Code**.

- For a pure offline activation, call NiceLabel support. Activation code will be generated using the provided **Registration Code**.
3. Copy and paste the received **Activation Code** and click **Activate Your License** to start using the activated copy of NiceLabel 2019.

4.2 License Upgrade

TIP: Information in this section is valid for the following NiceLabel 2019 modules: Designer Express, Designer Pro, Designer PowerForms, Print and Automation.

License upgrade procedure does not require any software (re)installation procedures. Continue with the current version of NiceLabel 2019 installed.

To upgrade an existing license, the following two keys are required:

- 25-digit license key of the installed edition. You received this key after purchasing your copy of NiceLabel 2019.
- 25-digit software upgrade key. This key upgrades your current edition of NiceLabel 2019.

After the upgrade, the "old" software key becomes deactivated.

TIP: NiceLabel 2019 licenses (LMS Pro/Enterprise) can also be centrally managed using NiceLabel Control Center. See the dedicated Control Center installation guide for details.

4.2.1 Upgrade Types

There are two types of upgrades available for NiceLabel 2019. Both are described in the following two sections:

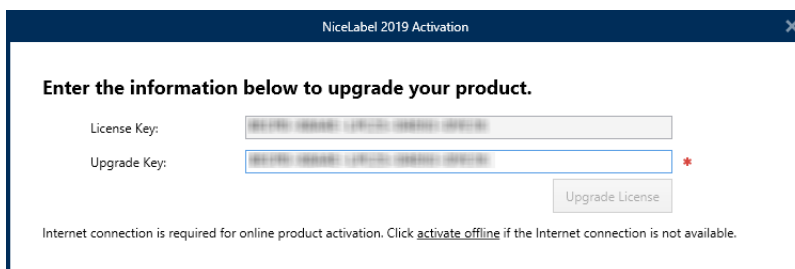
- **Product Edition Upgrade:** This type of upgrade expands the amount of product features and widens the possibilities of use.
- **Version Upgrade:** If you are still using NiceLabel 2017 and would like to upgrade to NiceLabel 2019, use this upgrade type.
- **Upgraded Number of Printers:** The use of NiceLabel 2019 products is licensed per connected printers. This type of upgrade expands the permitted number of printer to be used with the software.

License upgrade is normally done online. In cases when Internet access is not available, follow the offline upgrade steps in section [Offline Upgrade](#).

4.2.2 Product Edition Upgrade

When upgrading to a higher edition of NiceLabel 2019 software, for example from Designer Express to Designer Pro, you keep the existing product installed on your computer. Installation and activation of the alternative edition is done on top of the existing one.

1. Go to **File (backstage) tab > About**.
2. Click **Upgrade License**. The upgrade license dialog window appears:
 - **License Key:** Field is automatically populated with the existing license key.
 - **Upgrade Key:** Enter the upgrade key.



3. Click **Upgrade License**. Your copy of NiceLabel 2019 product has been upgraded. See the new **License** in **About > License Information**.

4.2.3 Version Upgrade

Due to constantly improving NiceLabel applications, we recommend you to upgrade your copy to the latest product version. Contact your NiceLabel reseller to receive the upgrade key.

NOTE: When purchasing version upgrade, always give your NiceLabel reseller the license key of your current version.

NOTE: If you are upgrading version and increasing the number of permitted printers at once,

Upgraded Number of Printers).

There are two upgrade cases:

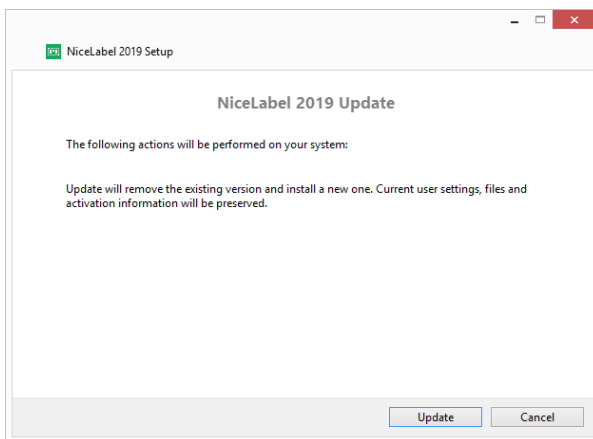
- You can upgrade the existing installation on a single or multiple computers.
- You can install NiceLabel 2019 on a clean computer and use upgrade key for activation.

TIP: When installing NiceLabel 2019 on multiple computers, it is recommendable to make the installations uniform. NiceLabel 2019 installer allows you to predefine language selection, directories, usage tracing, licensing information, and global variables. The procedure is available in section [Enforcing Configuration Options](#).

4.2.3.1 Upgrading The Existing Installation

If you have your existing installation(s) activated with a single-user or multi-user NiceLabel license, perform the upgrade using these steps:

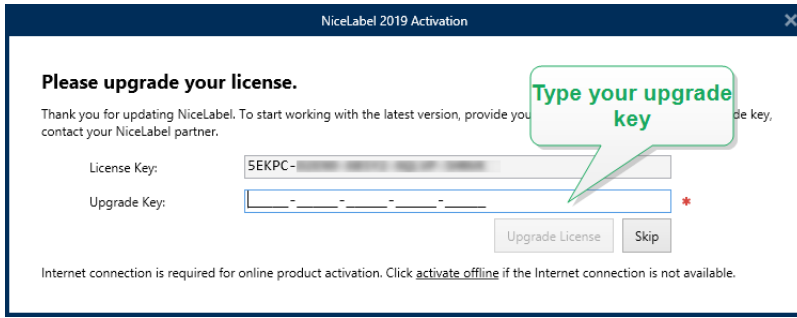
1. After receiving the **Upgrade Key** from your NiceLabel reseller, [download](#) and run the NiceLabel 2019 installation file.



Click **Update**. Installer removes your current version and installs the latest.

NOTE: Current user settings, files and activation information remain preserved during the upgrade.

2. Click **Close** when the setup procedure ends.
3. Run NiceLabel 2019. The **NiceLabel 2019 Activation** window opens. The License Key field is already populated with your license key from the previous version. Copy and paste the **Upgrade Key** from the email you received from your NiceLabel reseller.



4. Click **Upgrade License**. Now, the upgrade of your NiceLabel 2019 is done. See the new **License** in **About > License Information**.

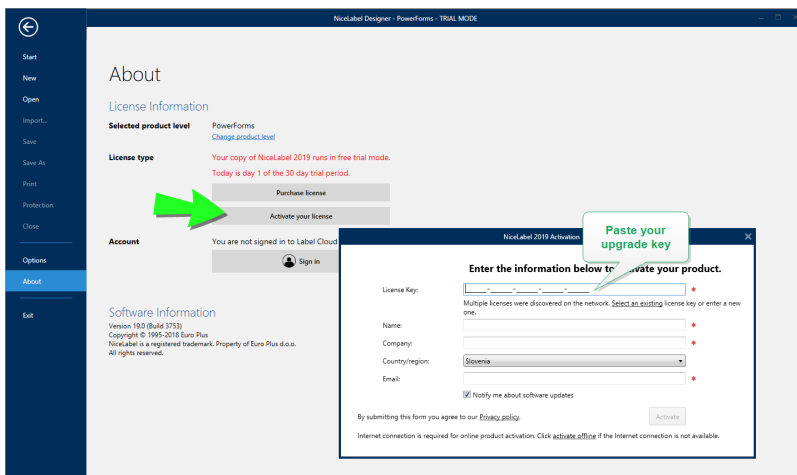
This

4.2.3.2 Installing And Activating NiceLabel 2019 With Upgrade Key

If you have a multi-user NiceLabel license, you might want to install and activate NiceLabel 2019 on additional computers with upgrade key.

1. After receiving the **Upgrade Key** from your NiceLabel reseller, [download](#) and run the NiceLabel 2019 installation file.
2. Complete the [Free Trial Setup](#).
3. When done, go to **File > About** and click **Activate your license**. The **NiceLabel 2019 Activation** window opens.
4. Copy and paste your **upgrade key** to the **License Key** field.

NOTE: You must not paste your "old" license key in the **License Key** field. Please use the upgrade key for NiceLabel 2019.



The NiceLabel 2019 Activation fields adapt to the pasted upgrade key automatically. These fields display the licensing information that you used while activating your copy of NiceLabel 2017.

5. Click **Activate**. Activation is complete. Click **OK** to restart NiceLabel 2019 and start working.

4.2.4 Upgraded Number Of Printers

This type of upgrade allows you to increase the permitted number of printers which are used for label printing. Complete the below described steps.

TIP: Upgraded number of printers allows you to follow the pay-as-you-grow pricing model. Printing capacity needs grow along with the growth in business – upgrade the license only when needed. Complete the procedure below to gain access to additional number of permitted printers.

1. Open any NiceLabel 2019 product.
2. Go to **File (backstage) tab > About** and click **Upgrade License**.
3. NiceLabel 2019 license activation dialog window opens.
 - **License Key:** The field is already populated with the currently used **License Key**.
 - Enter the purchased **Upgrade Key**.

4. Click **Upgrade license**. The number of permitted printers has been expanded. See the new **License** in **About > License Information**.

4.2.5 Offline Upgrade

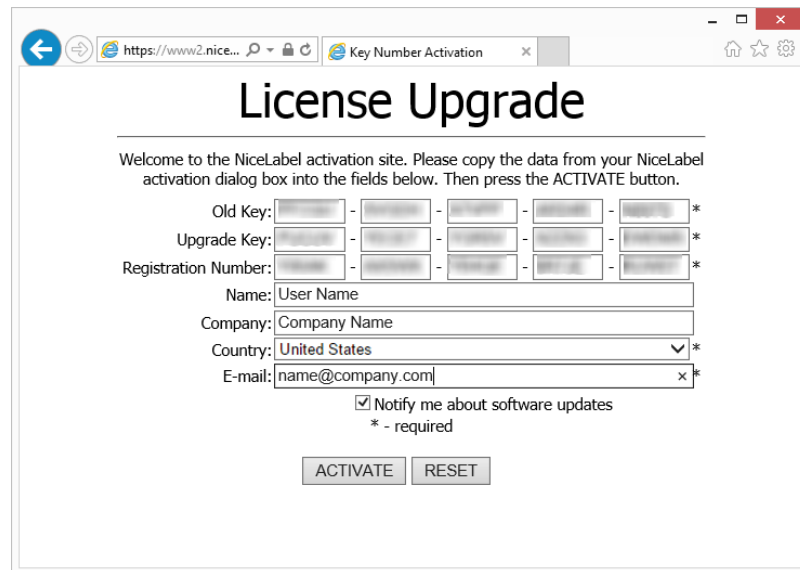
TIP: Use this option when performing an upgrade on a computer without Internet connection.

1. Go to **File (backstage) tab > About**.
2. Click **Upgrade License**. The upgrade license dialog window appears. **License Key** field is automatically populated with current license key.
3. Click the **activate offline** link. The activation dialog window expands.

Now, it includes additional two fields – **Registration Code** and **Activation Code**:

- **Registration code:** Automatically generated 25-digit code which identifies the purchased copy of the software. Use the registration code in two ways:
 - **Registration code** generates the **Activation code** at a dedicated license upgrade web page. To access the license upgrade web page on another computer with Internet access, click **Copy the link**. This action copies the link to license upgrade web page to clipboard. Open this link on a computer with Internet connection.

When you open the license upgrade page, the fields with information about your license are automatically populated. Click **Activate** to generate the **Activation Code**.



Use **Activation Code** on the computer without Internet access to activate the upgrade.

License Upgrade

The activation code was successfully generated. To finish the activation procedure, enter Activation Code to the NiceLabel Activation dialog box.

Activation Code: [Redacted]

The e-mail with Activation Code was successfully sent to address you have provided.

NOTE: Do not close the license activation dialog while obtaining the **Activation Code** on another computer with Internet access. If you close it, you will have to repeat the procedure with a new **Registration Code**.

- For a pure offline activation, call NiceLabel support. Activation code will be generated using the provided **Registration Code**.

4. Click **Upgrade license**. The number of permitted print printers has been expanded. See the new **License** in **About > License Information**.

5 Installation of Printer Drivers

NOTE: For detailed and printer vendor/model specific instructions on how to install the printer drivers, please refer to the document [NiceLabel Printer Drivers Installation Guide](#).

There are two ways to install NiceLabel printer drivers:

- Use NiceLabel **PrnInst** application (recommended).
- Use **Windows Add** printer process (alternative option).

NOTE: Before starting with printer driver installation, make sure you are logged in as a user with permission to install the driver.

5.1 Printer Driver Installation Using PrnInst

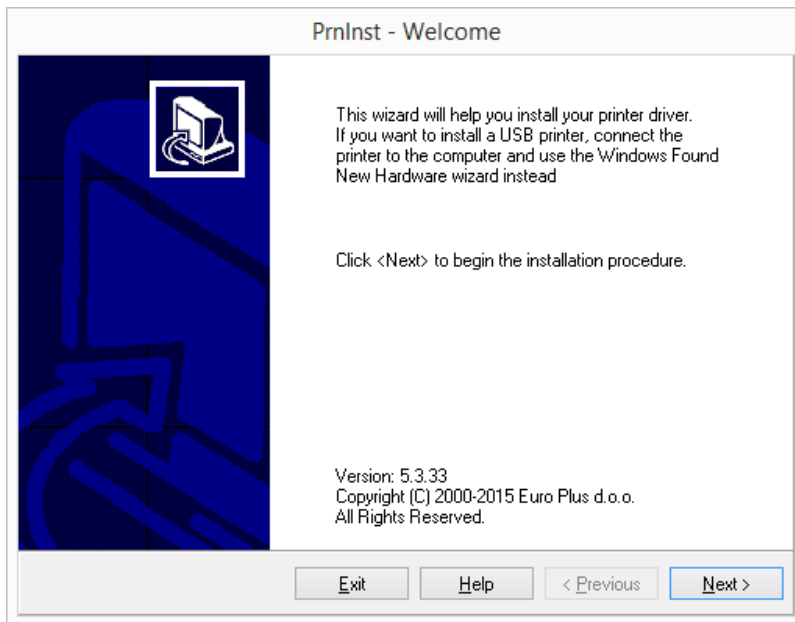
Printer Installation Wizard (PrnInst) is a dedicated application for installing printer drivers on Windows based systems.

PrnInst based installation is available for the devices that are connected to LAN networks or any computer port except for USB. For printers that support plug and play installation procedure, see [Plug-and-Play Driver Setup](#).

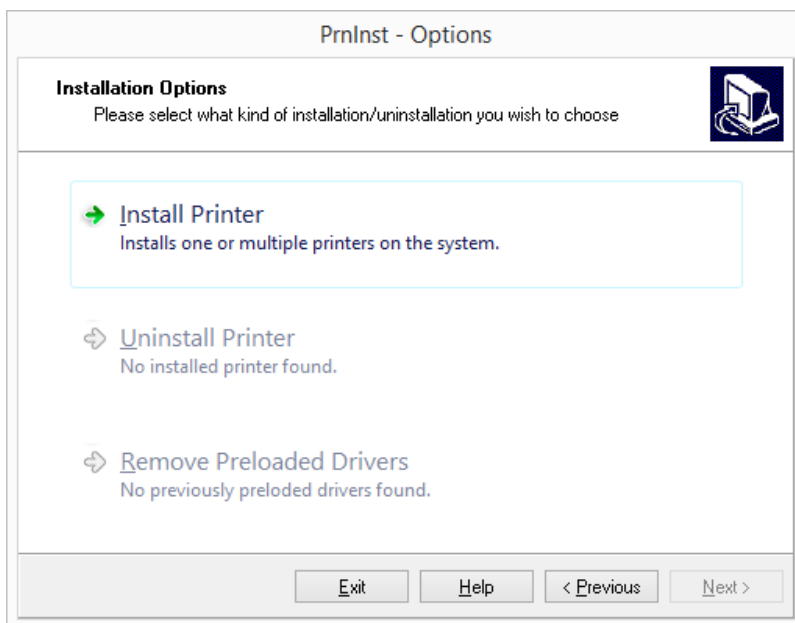
PrnInst versions for printers produced by multiple vendors are available at the NiceLabel [download site](#) and on installation CDs.

Download the correct printer driver to your local disk and run the downloaded self-extractable .exe file. PrnInst starts automatically. Follow the below described wizard steps to install the driver.

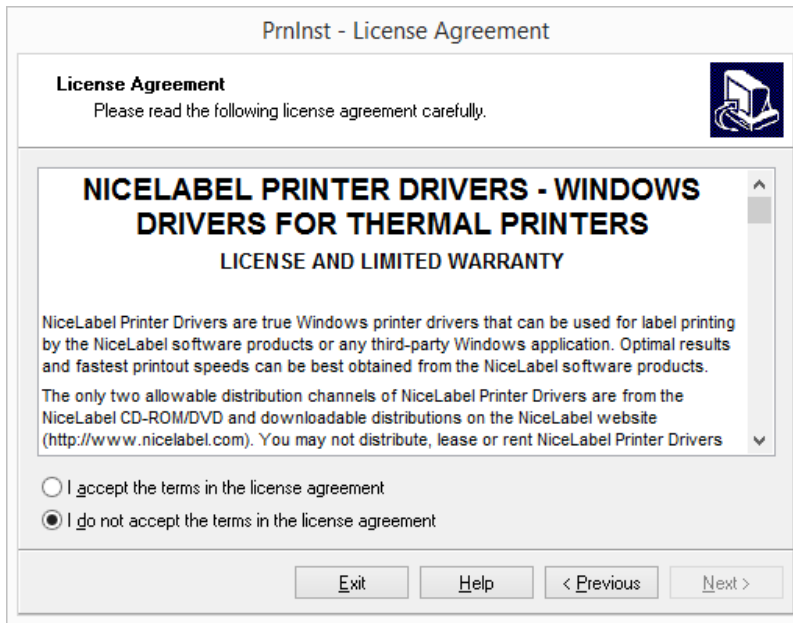
1. Unzip the installation files to a selected folder. Run the self-extractable .exe file. Welcome screen appears. Click **Next**.



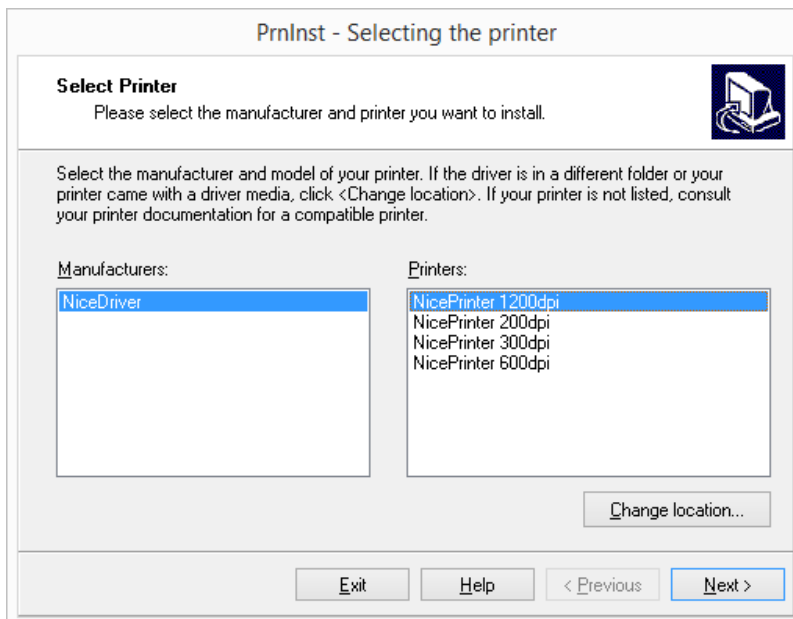
2. Select **Install Printer**.



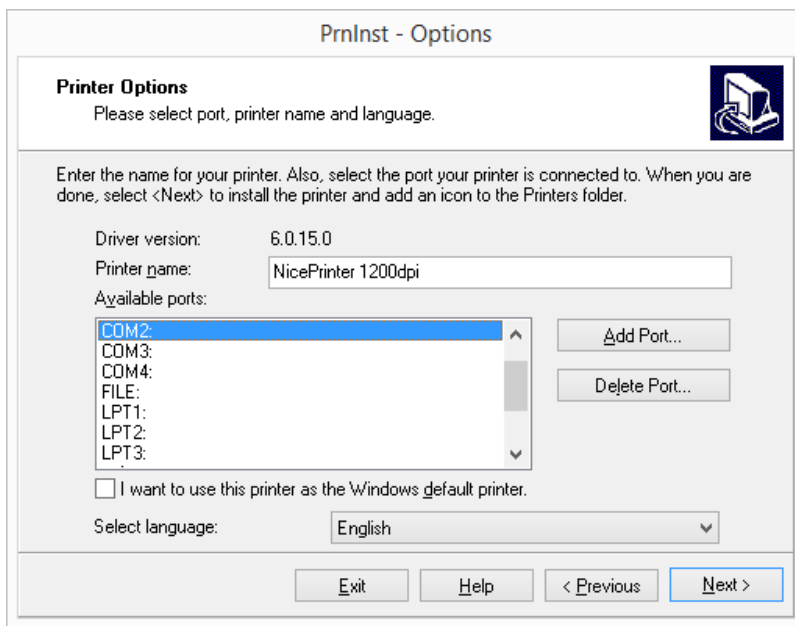
3. Accept the terms of license agreement and click **Next**.



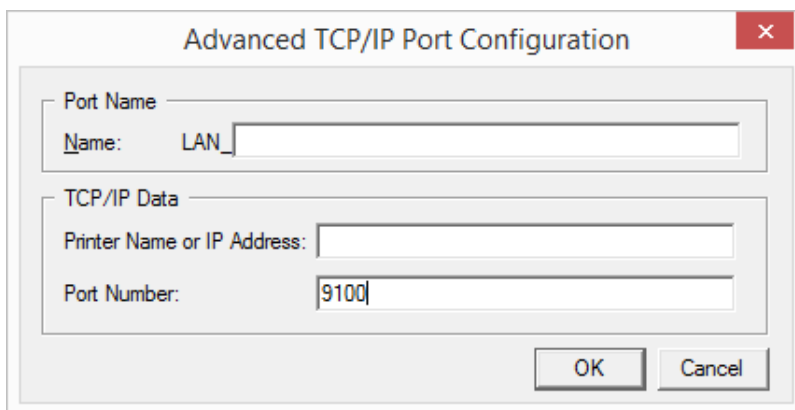
4. Select the manufacturer and the appropriate printer model. Click **Next**.



5. **Printer Options** window appears. Select the appropriate port, add a port or delete it.

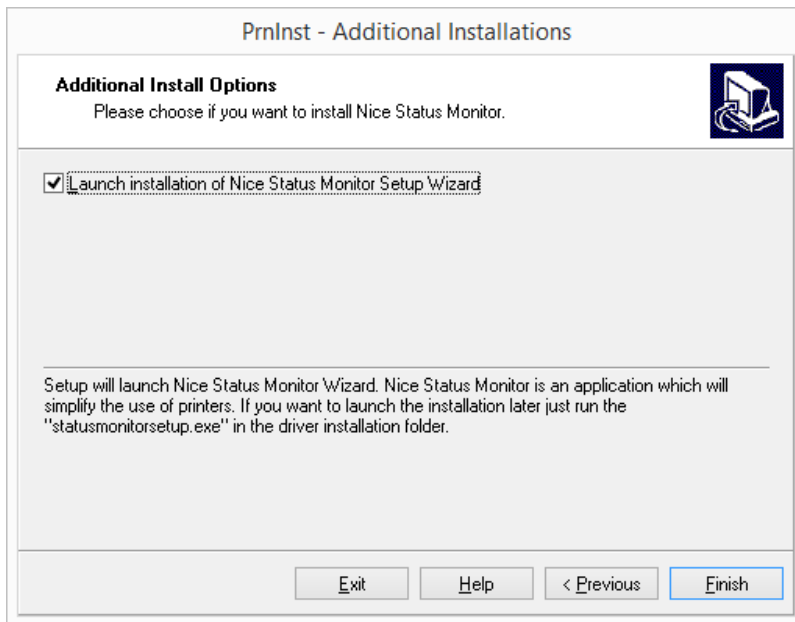


6. After clicking **Add Port**, the **Advanced TCP/IP Port Configuration** window appears. Insert the appropriate printer network settings and click **OK**.



NOTE: When using network printers, the Advanced TCP/IP port must be always installed. Only a connection established over the Advanced TCP/IP port ensures bidirectional data traffic between printer driver and printer. Such service cannot be carried over a standard TCP/IP port.

7. **Additional Install Options** window appears allowing you to install the **Nice Status Monitor** (optional).



8. Enable the **Launch installation of Nice Status Monitor Setup Wizard** option to install the Nice Status Monitor after clicking **Finish**. You may choose to install the driver without it – disable the option and click **Finish** in this case.

TIP: Nice Status Monitor application simplifies managing of multiple printers. This application may be added later. To install it, run **StatusMonitorSetup.exe** in the driver installation folder.

5.2 Printer Driver Installation Using Windows Installer

Printer driver installation using Windows Installer is used on devices that are connected via one of the following ports:

- USB port
- Parallel port (LPT)

5.2.1 Plug-and-Play Driver Setup

During this procedure, Windows automatically detects the newly connected hardware using a plug-and-play event on both ports – USB and LPT.

Follow these steps to install the NiceLabel printer driver:

1. Connect the printer to a power outlet and turn it on.
2. Connect the printer to a computer using USB or LPT port.
3. The driver is located online and downloaded to the PC. Automatic installation follows

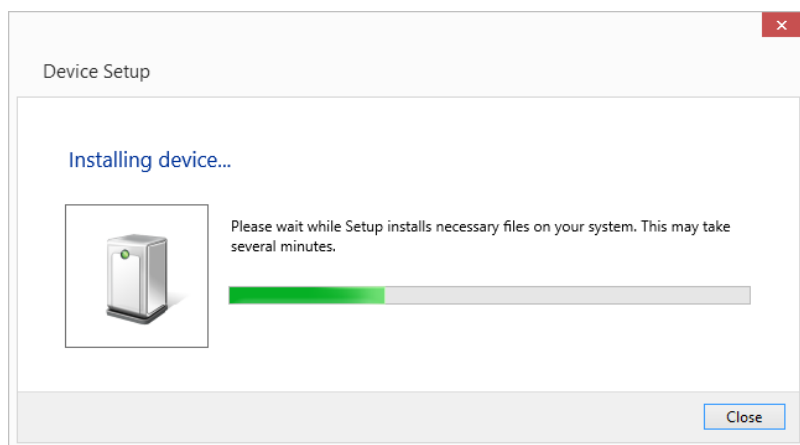
immediately.

4. The installed printer is ready for printing.

NOTE: Check the specifications if connecting a printer to the USB 3.0 port. Certain printers do not support the USB 3.0 standard.

NOTE: Automatic printer detection is supported on USB and LPT ports only. The driver needs to be installed using PrnInst on other ports.

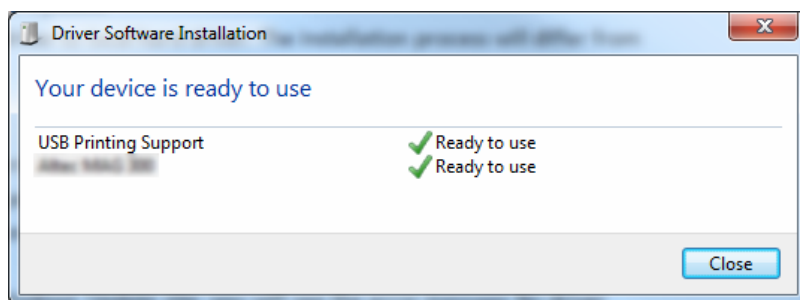
The operating system automatically checks Windows Update and installs the driver.



5.2.2 Printer Driver Available On Windows Update Site

In the printer driver is available on the Windows update site, it is automatically downloaded and installed.

On the latest operating systems (Windows 7 and later), a system notification message is displayed. If you click the notification message, the new **Driver Software Installation** dialog is displayed. Monitor the installation status using this dialog:



5.2.3 Printer Driver Unavailable On Windows Update Site – Manual Printer Driver Installation

If the printer driver is unavailable on Windows Update site, download the printer driver to the local disk. Follow these steps to install a NiceLabel printer driver using the manual Windows **Add a printer** procedure.

1. Connect the printer to power outlet and turn it on.
2. Connect the printer to a computer.
3. Windows detects the printer.
4. Windows Update automatically checks for the printer driver online and fails. Start with manual installation.

The manual driver installation varies between various operating systems. Follow the below described steps.

1. Open **Control Panel** and click **Hardware and Sound > Devices and Printers > Device Manager**
2. Expand node **Other devices**. The installed printer is listed here.
3. Right click the printer and select **Update Driver Software**.
4. At the prompt **How do you want to search for driver software?** select **Browse my computer for driver software**.

6 Deactivating Software

When using the NiceLabel 2019 software activated with a software license key, you can deactivate it and move the license to another workstation.

NOTE: With NiceLabel multi-user products, you can install an unlimited number of NiceLabel clients. The license unit for NiceLabel multi-user products is a printer seat. Each unique printer that you use for label printing consumes one license.

NOTE: You can only deactivate Designer and PowerForms licenses.

In NiceLabel 2019, licenses are

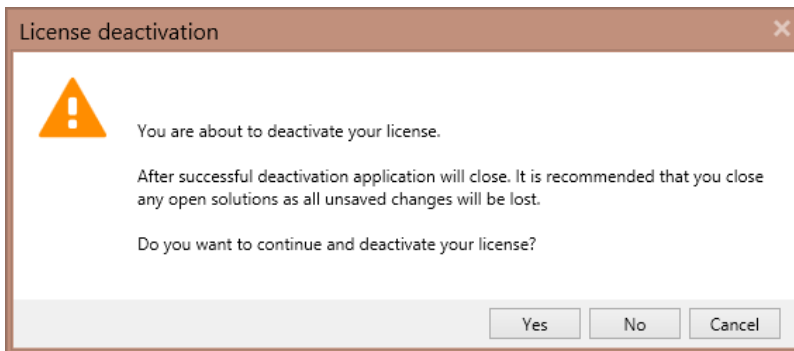
More details are available in the following sections:

- [License Deactivation Procedure](#)
- [Moving the Software License to Another Computer](#)

6.1 License Deactivation Procedure

To deactivate the NiceLabel license, do the following:

1. Start any NiceLabel 2019 program.
2. Go to **File > About** and click **Deactivate License**. License deactivation warning window opens.



3. Click **Yes** to deactivate the license or **No/Cancel** to abort the deactivation procedure.
4. The single-user license has been deactivated and can be again activated on another workstation.

TIP: Another possibility to deactivate NiceLabel 2019 is to uninstall it. During the removal process you will be prompted whether you want to remove the license or not.

6.2 Moving The Software License To Another Computer

NiceLabel 2019 runs on every workstation on which it has been activated. The software can be activated using a software or hardware key (license key stored on USB drive).

6.2.1 Moving Hardware Activation

To move the hardware key to another computer, complete the following steps:

1. Disconnect the USB hardware key from your computer.
2. Install NiceLabel 2019 on the new computer. See section [Setup Procedure](#)
3. Plug the USB drive to another computer. The installed copy of NiceLabel 2019 is active.

6.2.2 Moving Software Activation

To move the license to another computer using a **software key**, complete the following steps:

1. Run any NiceLabel 2019 product on the currently active computer.
2. Go to **File > About** and click **Deactivate License**
3. Select the option **Deactivate License**. Follow the procedure as defined in section [Deactivating Software](#) Selecting this option removes the license from your computer and stores it back on the activation server.

NOTE: The computer must have access to the internet to be able to transfer the license back to the activation server.

4. Install the software on the new computer. See section [Setup Procedure](#).
5. Activate the software on the new computer. See section [License Activation](#)

7 Online Support

You can find the latest builds, updates, workarounds for problems and Frequently Asked Questions (FAQ) on the NiceLabel [support site](#).

For more information, please refer to:

- Knowledge base: <https://www.nicelabel.com/support/knowledge-base>
- NiceLabel Support: <https://www.nicelabel.com/support/technical-support>
- NiceLabel Tutorials: <https://www.nicelabel.com/learning-center/tutorials>
- NiceLabel Forums: <https://forums.nicelabel.com/>

NOTE: If you have a Service Maintenance Agreement (SMA), please contact the premium support as specified in the agreement.

Americas

+1 262 784 2456

sales.americas@nicelabel.com

EMEA

+386 4280 5000

sales@nicelabel.com

Germany

+49 6104 68 99 80

sales@nicelabel.de

China

+86 21 6249 0371

sales@nicelabel.cn

www.nicelabel.com

