

# NiceLabel Version 5.4 Standard Series

## Release Notes

Rev-1110

© 2011 Euro Plus  
All rights reserved.  
[www.nicelabel.com](http://www.nicelabel.com)  
[support@nicelabel.com](mailto:support@nicelabel.com)  
[sales@nicelabel.com](mailto:sales@nicelabel.com)



**Head Office**

Euro Plus d.o.o.  
Poslovna cona A 2  
SI-4208 Šenčur, Slovenia  
Tel.: +386 4 280 50 00  
Fax: +386 4 233 11 48  
[www.europlus.si](http://www.europlus.si)  
[info@europlus.si](mailto:info@europlus.si)

# Table of Contents

<b>What is New in NiceLabel Pro.....</b>	<b>3</b>
Improved Design Possibilities.....	3
Color printing on QLS Vivo! Touch printer.....	3
Native communication to the Epson TM-C3400 printer.....	3
Creating new label based on the existing template .....	3
Support for 2D code: Grid Matrix .....	3
Support for double byte characters in 2D codes .....	4
Support for double-byte schema definition .....	5
<b>What is New in NiceLabel Suite .....</b>	<b>6</b>
NiceForm .....	6
Support for image transparency for the button .....	6
Auto-moving focus in edit fields .....	6
Copying the database configuration.....	7
NiceWatch .....	7
Improved stability for NiceWatch running in 24/7 scenarios.....	7
NiceMemMaster .....	8
Preloading graphics into TSC printers.....	8

# What is New in NiceLabel Pro

## Improved Design Possibilities

---

### Color printing on QLS Vivo! Touch printer

NiceLabel Pro can print full-color labels to QLS Vivo! Touch label printer thanks to the new NiceDriver for this printer. The objects will print in the same color as seen on screen. The printer will also take care of the color separation so the bitmaps on the label will print in full color.

### Native communication to the Epson TM-C3400 printer

NiceLabel software can communicate with the original driver for the printer model Epson TM C-4300 using a low-level communication. This method allows the label designer to define label media information in an easier way.

There is no need to configure the label dimensions in the printer driver and then use that paper layout in NiceLabel software. The user does not have to interact with the driver at all. The label dimensions can be defined in the familiar NiceLabel user interface, in the Label Setup wizard or Label Setup dialog box.

### Creating new label based on the existing template

NiceLabel Pro introduces a new command to create new label design based on the existing label template. Instead of opening an existing label and saving it in a new filename the label designer can use the command **New from template** and browse for the existing label template.

The label will open in NiceLabel Pro and inherit all objects from the selected template. However, it will be without a defined filename. Save command will prompt the designer for a new filename.

This command eliminates the problem of overwriting the existing label with changes, because the designer forgot to use the command Save As.

### Support for 2D code: Grid Matrix

The Grid Matrix Code is specifically designed to encode all Chinese characters. It's a square, variable-sized, 2D barcode symbology with a strong pattern finder due to its dark and light framed macromodules.

Because of the specific pattern, barcode readers can easily locate and orient the barcode, despite any symbol damage, due to error correction and omni-directional scanning capabilities. Overall, this improves read rates and the quality of product tracking.

The Grid Matrix can encode 7-bit ASCII, numeric, and binary data, in addition to any combination of data types within the same symbol, particularly effective with Chinese

characters (Grid Matrix is designed to encode the entire GB 2312-1980 Chinese character set efficiently).

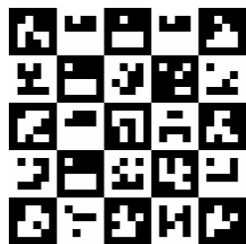


Figure 1 - Example of Grid Matrix symbol with error-correction level 5 encoding "Grid Matrix"

### Support for double byte characters in 2D codes

A double-byte character set (DBCS) is a character set that represents each character with 2 bytes. The DBCS supports national languages that contain a large number of unique characters or symbols (the maximum number of characters that can be represented with 1 byte is 256 characters, while 2 bytes can represent up to 65,536 characters). Examples of such languages include Japanese, Korean, and Chinese.

NiceLabel can encode double-byte characters in the following 2D codes: QR, Micro QR, PDF-417, Datamatrix, GS1 Datamatrix, Aztek, Grid Matrix and 2D Pharmacode. NiceLabel can also encode Unicode characters in the 2D codes, where applicable. For 2D codes you can use DBCS and Unicode, or just one of them, that depends on the 2D code itself.

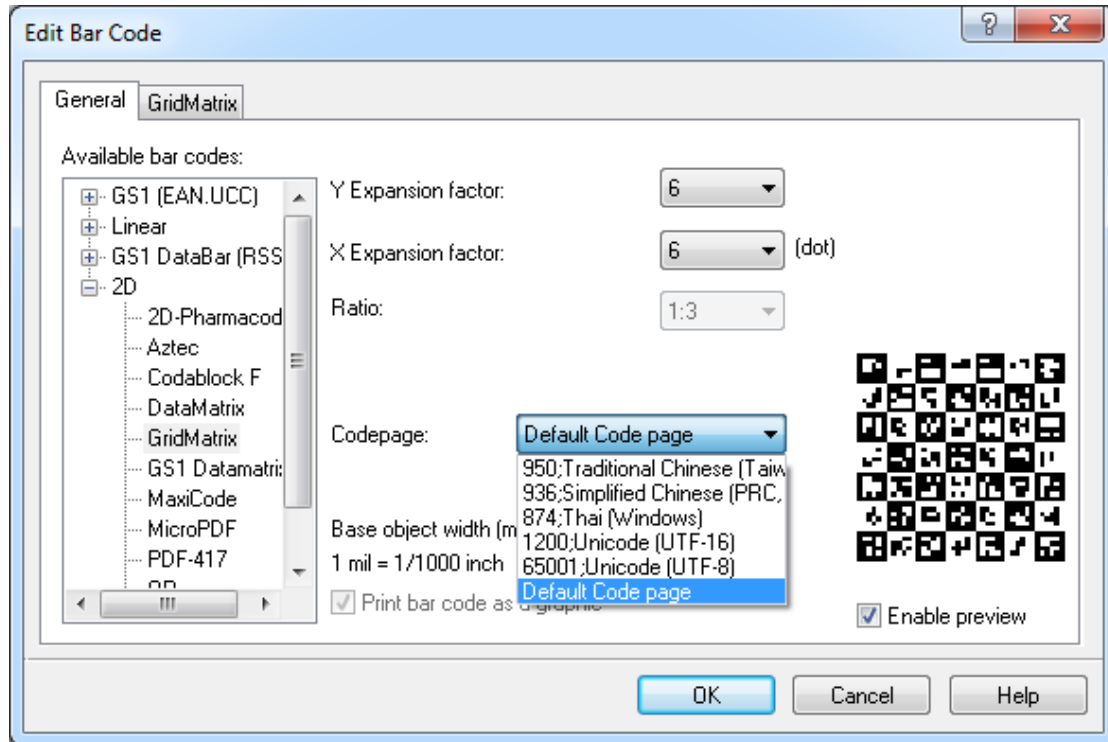


Figure 2 - Selecting the code page value for 2D code contents

### Support for double-byte schema definition

You can also use double-byte characters in the database connections. This becomes important when you connect to the databases that contain double-byte characters in table and field names.

# What is New in NiceLabel Suite

## NiceForm

---

Support for image transparency for the button

You can place images on the button and display them with the button text or alone. You can place any image type on the button, including PNG (Portable Network Graphics) types.

PNG image format is important for achieving the transparency. The transparent PNG images will show the background as see-through not with a white background.



Figure 3: Button that uses an image with transparent background

Auto-moving focus in edit fields

Automatically move focus to new object in tab order when the previous object has been filled with its maximum length of data.

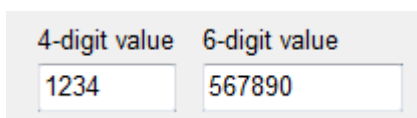


Figure 4: When the first edit field populates all 4 available characters, focus moves to the second edit field

For example, you scan the 10-digit barcode into the NiceForm application. But you want the value to be saved into two variables, 4 characters in variable1 and 6 characters in variable2. The first edit field can accept 4 characters at the maximum. When you scan the bar code, first 4 characters are entered into the first edit field, then the focus jumps into a second edit field, which remembers the next 6 characters.

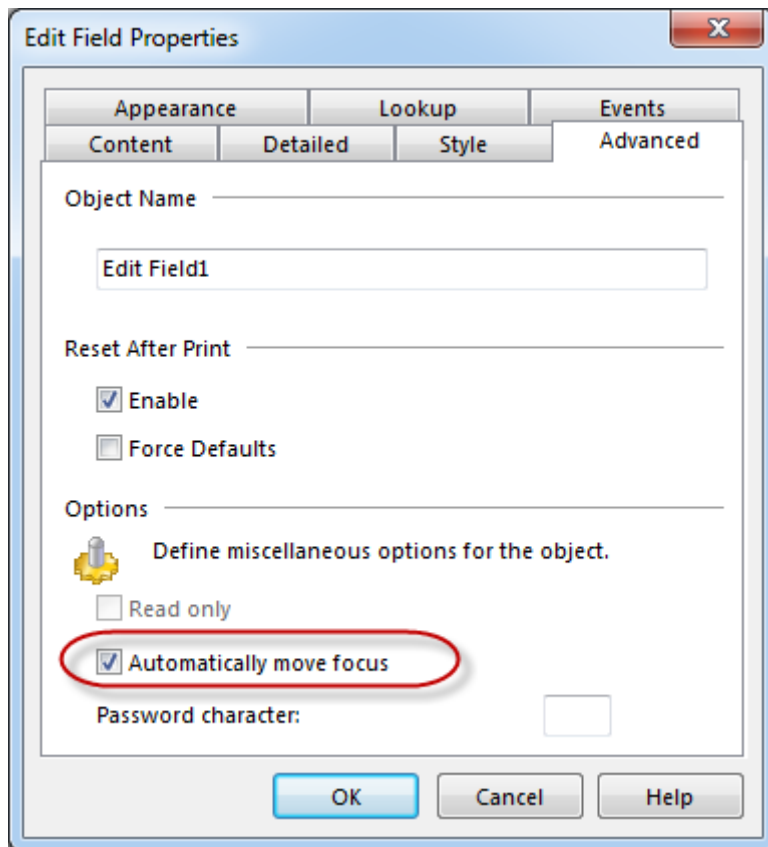


Figure 5 - Automatically moving focus to next object in the tab order

## Copying the database configuration

You can make a copy of database connection that is used in a form. This is useful if you want to make a secondary connection to the same database, but to some other table.

This feature will save you the time to create a connection to the same database again.

## NiceWatch

### Improved stability for NiceWatch running in 24/7 scenarios

NiceWatch collects data from various systems for processing and automated printing. In the background, NiceWatch uses the NiceLabel print engine to image and print labels. NiceWatch occasionally restarts the print engine. This helps the system perform better under the high loads and especially when NiceWatch must serve requests 24/7 without any system restart.

After several thousands of restarts of the print engine the Windows system where NiceWatch was installed could become unresponsive. The problem was isolated in the NiceLabel labs and solution implemented in the new version.

## NiceMemMaster

---

### Preloading graphics into TSC printers

You can download images into memory/memory cards for TSC printers. When you pre-load images printing speed can dramatically increase simply because of the fact that there is less data being sent to the label for each label. The graphical data usually takes majority of the bytes that are sent to the printer.