

NiceLabel 2017 Licensing

Options and Deployment

Rev-1603 ©NiceLabel 2016.

Contents

INTRODUCTION	3
NICELABEL 2017 LICENSING OPTIONS	3
Single-user License	3
Multi-user License	3
HOW DOES NICELABEL 2017 MULTI-USER LICENSING WORK?	4
Printer as a License Seat	4
Counting Printers	4
Licensing Mechanism	5
Licensing Requirements	5
License Violation Handling	6
Reserving License for Printer	7
Printer Count for Web Printing	7
Usage over WAN	8
Non-Production Environments	8
GLOSSARY	8
Licensed Printers	8
Retention Time	8
License Violation (Licensed Printers Number Exceeded)	8

Introduction

Print productivity is becoming increasingly important for companies of all sizes. The complexity of products, modules and solutions the companies use for labelling has grown. Unfortunately, for end-users, VARs, and solution architects, the challenge is not just to choose the right software and modules for the solution. They have to be aware of various licensing models, their benefits and limitations.

Licensing on its own can add a huge amount of complexity to the solution design process. To address the challenges of implementing the right solution, NiceLabel company has introduced a clean product range and transparent licensing policy with its new NiceLabel 2017 platform. The goals were to simplify NiceLabel project quotation, to promote best practices, and to improve print productivity across the product range while using industry proven printer-seat licensing.

NiceLabel 2017 Licensing Options

Single-user License

Single-user license grants the end-user the right to use one instance of NiceLabel 2017 on a single workstation. In this licensing model, the end-user is allowed to use an unlimited number of printers from the workstation with the activated copy of NiceLabel 2017 license.

Each workstation must be activated with its own unique license key. You must obtain as many license keys as necessary to cover the number of your workstations.

Multi-user License

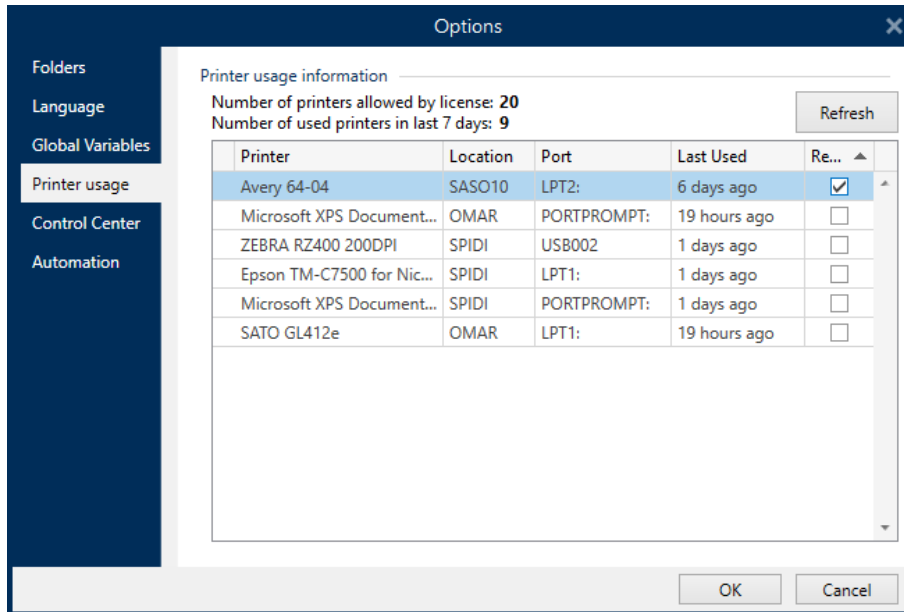
Multi-user license allows installation and usage of unlimited instances of NiceLabel 2017 on an unlimited number of workstations. In this licensing model, the number of printer seats is limited. The end-users are allowed to use as many printers as purchased with the respective NiceLabel product.

All modules of NiceLabel LMS product must be activated using the same license key. You must use the same single license key to activate all instances of modules (i.e. NiceLabel Designer, NiceLabel Control Center, NiceLabel Automation, and NiceLabel Web Printing) regardless of the number of computers that are in use.

How does NiceLabel 2017 Multi-user Licensing Work?

Printer as a License Seat

Each NiceLabel 2017 application from the multi-user product range counts the number of printers used. When a printer is used from any application, it is added to the **Printer Usage** list. If the printer is already on the list, the **Last Used** field is updated.



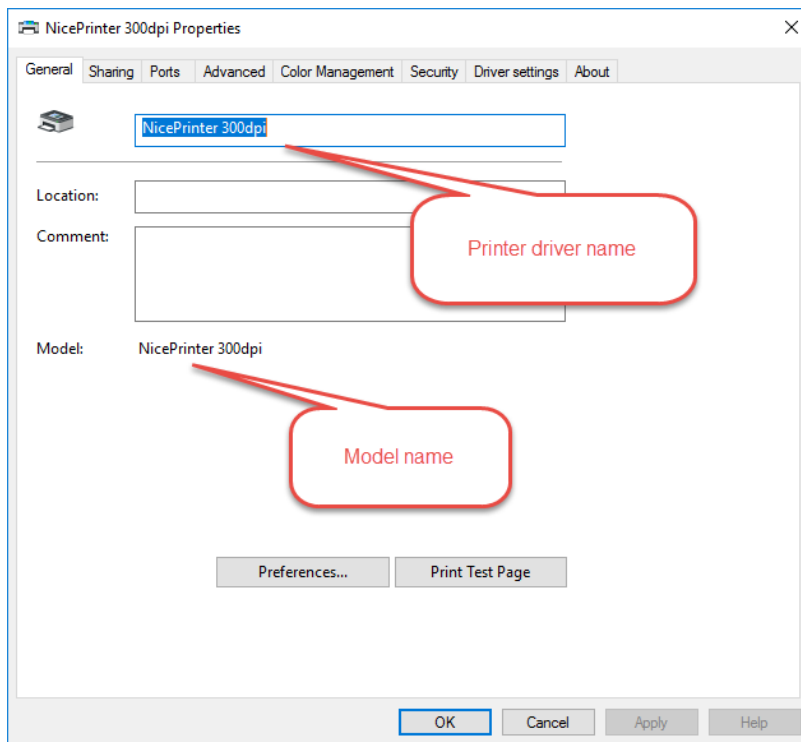
The printer is removed from the Printer Usage list after being idle for 7 days (**Retention Time**).

Counting Printers

NiceLabel 2017 is designed to count each printer used by the system only once. How the printer is connected to the system is irrelevant. The unique printer identifier is a combination of printer **model name** and **printer location**. Model name is defined internally in the printer driver and the user cannot change it. Location is defined by the **Network address (IP)** for network printers or **Workstation+Port** for locally connected printers.

A printer is counted as a "single printer" in these two cases:

- A shared printer on the network with a uniform IP address is used from multiple workstations.
- A locally connected printer is shared and used by another workstation.



Note that “model name” is not the same as “printer driver name”. Model name is hard-coded in the printer driver and is not user-editable (see the screenshot), while the printer driver name can be changed by the user.

Licensing Mechanism

A substantial effort has been put into designing the mechanism that effectively monitors the printer count usage. The goal was to make it is easy to deploy and to prevent it from adding additional strain on end-users or their IT infrastructure.

Licensing mechanisms are running in the background and require no configuration or management to be done by the user. There is no need to install a central licensing server. By using a proprietary NiceLabel licensing engine, all NiceLabel 2017 applications synchronize their used printer count and, as a result, acquire the cumulative number of printers used.

NOTE: While the NiceLabel 2017 licensing mechanism attempts to monitor the number of printers you are using, it is your responsibility to ensure that you are licensed for the actual number of printers you are using. ([Consult EULA](#), section 2 for details).

Licensing Requirements

In order for NiceLabel 2017 licensing mechanisms to perform their role properly, the following conditions must be met.

- All workstations that will activate NiceLabel products with the same multi-user license must belong to the same **Domain** or to the same **Workgroup**. The same multi-user license can also be used on computers that are members of different domains, if you establish two-way trust relationship between the domains.
- All workstations that will activate NiceLabel 2017 products with the same multi-user license must be able to communicate between themselves. During NiceLabel installation the appropriate rule is

added in Windows Firewall to allow the communication.

If you use some other firewall or have complex network structure, make sure to allow the following traffic:

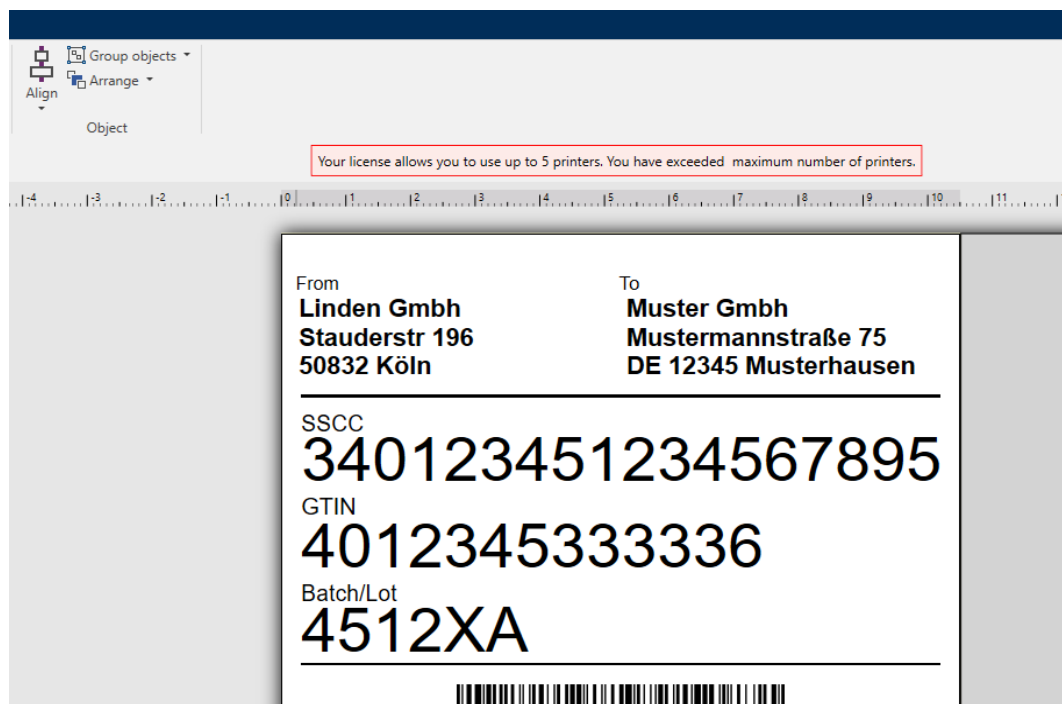
- **Computer with installed NiceLabel Designer** (it includes NiceLabel Automation). The service "NiceLabel Proxy Service 2017" on each workstation must be accessible for communication with other NiceLabel computers. Port **6772 TCP/UDP** is used for inbound communication.
- **Computer with installed NiceLabel Control Center**. The service "NiceLabelEPMPProxyService" must be accessible for communication with other NiceLabel computers. Port **6773 TCP/UDP** is used for inbound communication.

NOTE: If you install NiceLabel Designer and NiceLabel Control Center on the same computer, you have to enable inbound connectivity for both services, "NiceLabel Proxy Service 2017" and "NiceLabelEPMPProxyService". You have to allow incoming traffic on both ports, 6772 and 6773 TCP/UDP.

License Violation Handling

If the used printer count exceeds the granted **Licensed Printers** number, the multi-user NiceLabel product activates the **Grace Period**. NiceLabel grants the end-user a 30-day time extension during which the number of licensed printers is doubled.

User will see a notification as shown in the screenshot below.



At NiceLabel company, we are aware that labeling is a mission critical business process. Grace period provided by NiceLabel 2017 guarantees that printing is not disrupted even if the printer count exceeds the **Licensed Printers**.

For example, if you have purchased a license for 10 printers, you are temporarily allowed to use 20 printers. Grace period provides plenty of time to resolve the licensing violation without any printing downtime or loss of the ability to design labels. You can either upgrade your license to a higher number of printer seats or stop using the number of printers that are exceeding the **Licensed Printers** number. The www.nicelabel.com

exceeding printers are removed from the list after remaining unused for 7 days (**Retention Time**) allowing the system to automatically recover from grace period.

If a license violation is not resolved within the grace period, the number of available printers is reduced back to the number of purchased printer seats. As seen in the previous example, 10 last-used printers in the Printer Usage list can be used.

Reserving License for Printer

To make sure printing to a specific printer is always possible, you can reserve a license seat for that specific printer. This will keep the printer in the Printer Usage list even if the Retention Time has already been reached, which would remove the printer from the list. The printer will occupy the license seat for as long the Reserve flag is enabled.

Enable printer reservation in **Options>Printer usage** in NiceLabel 2017 Designer modules or in **Administration>Licenses** in the Control Center module.

Printer Count for Web Printing

The same printer-counting mechanism is also in place for printers used within web platform. Additional option is available – it allows Control Center administrators to limit the number of printers that are available to a particular web user and to control the maximum amount of used license seats.

Edit client

Username: nutritionEU
 Windows user

Password:

Confirm password:

E-Mail: marketing@nicelabel.com

Solution: https://NiceDemo:8080/Solutions By Indust ...

Variables:

Number of printers: 2

IP filter:

Limit number of printers

Log printing activities

Allow access to non-published files

Active

OK Cancel

NOTE: License seats for Web printing are taken from the common pool of available printers. For example, for the product license NiceLabel LMS Enterprise for 10 printers, these license seats will be shared among all workstations and NiceLabel modules. These include Designer, Automation, Control Center, and Web Printing.

Usage over WAN

NiceLabel web printing module represents a best-practice approach for scalable printing solutions across sites in a WAN environment. It allows easy deployment of effective printing solutions with centralized control and no licensing implications (only server needs to be licensed).

If you need to deploy other NiceLabel 2017 modules across different sites which are not included in the LAN network, you will need a separate multi-user license with the appropriate number of Licensed Printers for each site.

NOTE: NiceLabel's web based technology (Control Center) with Change and transport system (CTS) allows you to centralize the control across sites which are not connected to the LAN network, and use different licenses.

Non-Production Environments

NiceLabel LMS deployments typically consist of at least two environments (tiers). One for developing and testing the printing solutions (DEV) and one for the actual production (PROD). Larger deployments or customers in regulated industries will normally add one or more environments for quality assurance (QA) purposes.

NiceLabel recommends using a separate license key for each environment as it ensures independent operation, uninterrupted production and controlled system maintenance.

NOTE: NiceLabel LMS Enterprise product comes bundled with a single non-production license, and Change and transport system (CTS) for controlled change promotion between different environments.

Glossary

Licensed Printers

This is the number of unique printers that can be used with the multi-user license. The number is defined through the number specified in the purchase order, and visible in the about sections of NiceLabel 2017 applications.

Retention Time

This is the time interval for which the license is in use for a specific printer. When you use a printer for the first time, NiceLabel 2017 consumes one license seat and decrease the number of available **Licensed Printers** by one. After the same printer is not used for a 7-day period, the license seat for this printer is released and can be used by another printer. The above mentioned 7-day period is referred to as **Retention Time**.

License Violation (Licensed Printers Number Exceeded)

License Violation is the state which takes place after you exceed the number or license seats you have purchased with a license (**Licensed Printers**). You are using more printers than allowed by the currently active license.

Americas
+1 262 784 2456
sales.americas@nicelabel.com

EMEA
+386 4280 5000
sales@nicelabel.com

Germany
+49 6104 68 99 80
sales@nicelabel.de

China
+86 21 6249 0371
sales@nicelabel.cn

www.nicelabel.com

