

The logo for NiceLabel, featuring the word "NiceLabel" in white text on a dark blue rounded rectangular background. A small green circle with a white arrow pointing up and to the right is positioned at the top right corner of the dark blue rectangle.

NiceLabel

NiceLabel PowerForms Web 6.5

Release Notes

Rev-1504

Table of Contents

What's New in PowerForms Web?	2
New Functionality	2
Accessing Label Files Relatively in the Subfolders of the Document Storage	2
Updated Support for Transparent Graphics.....	2
Full-color Transparent Images Support for the EPSON CM-7500 Label Printer ...	3
New Label Template Features	3
New Text Object Properties Supported	3
Support for Master/Slave Table Connections in Labels.....	4
Support for "Collect Records" Database Connection Option	5
Updated Application Identifiers for GS1 support.....	5

What's New in PowerForms Web?

New Functionality

Accessing Label Files Relatively in the Subfolders of the Document Storage

When a label load is requested in the PowerForms Web application, the first search location is the solution file itself. If the label is not a part of the solution file, it will be loaded from the Document Storage using the three-way search algorithm, whenever it is found first:

- First the same folder with the solution file (.SLNZ)
- Then the subfolder Labels (. \Labels)
- Then the subfolder Labels in the parent folder (. . \Labels)

The search algorithm has been expanded with support for the absolute or relative path. For example:

- **Absolute path.** Load label from subfolder Labels of root folder Project
/Project/Labels/label.lbl
- **Relative path.** Load label relatively from the folder with .SLNZ file. Go one folder up, then down to Labels/Series 1
../Labels/Series 1/label.lbl

If you provide just the name of the external label, the three-way search algorithm is used. If you provide the absolute or relative path to the external label, only this location is checked.

Updated Support for Transparent Graphics

NiceLabel PowerForms Web can already print the images in transparent mode, when you use NiceLabel printer drivers. Transparent images are without any background, but use a see-through background. You can stack the transparent images on top of each other on the label and the top image will not cut the rectangular shape out of the images lower in the stack.



Figure 1: Support for transparent images (left) compared to the previous version (right)

When using images with transparency on the label, the images will be printed transparently on page printers (GDI printing). Also when printing transparent images on PostScript printers, the images will be printed correctly.

Only some image file formats support transparency. The popular formats are PNG, PSD, and WMF.

Full-color Transparent Images Support for the EPSON CM-7500 Label Printer

When printing with the EPSON CM-7500 label printer, PowerForms Web will transfer images including alpha channel (transparency) directly to the printer. A native NiceLabel printer driver is available for the EPSON CM-7500 full-color label printer.

New Label Template Features

New Text Object Properties Supported

When the labels are printed from PowerForms Web applications, the following properties of the Text object can now be used:

- Mirror effect
- Inverse effect
- Line spacing

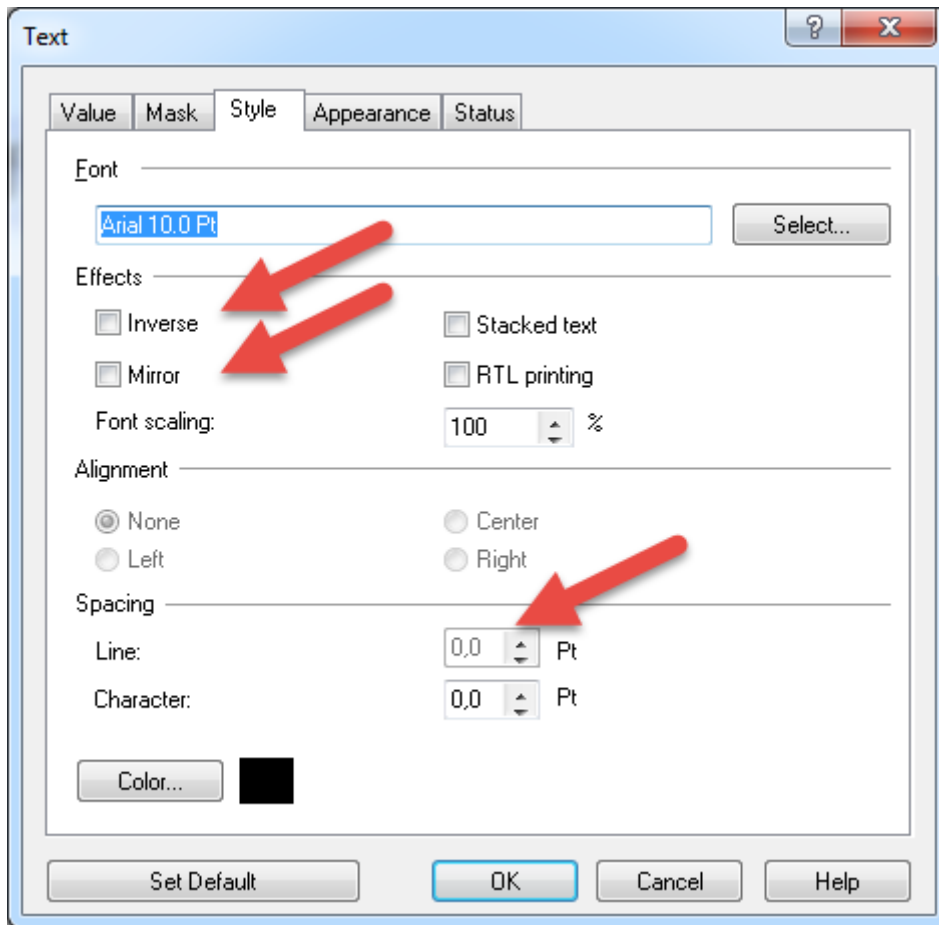


Figure 2: Label design options now available in PowerForms Web

Support for Master/Slave Table Connections in Labels

A Master/Slave connection in the label represents a case when you have made two (or) more database connections on the label and have created connections between the tables. In this case, each record in the master connection has one or more records associated in the slave connection. The combined data from the master and slave table must print on the same label.

When two or more tables are dependent, the master table will switch to the next record only when all records in the slave table have been used up.

When creating PowerForms Web solutions, the configuration process usually involves the database connections made on the forms, not in the labels. Now you can make a decision and use the database connection in the label if that solves your requirement more efficiently.

Support for "Collect Records" Database Connection Option

When the option **Collect Records** is enabled in the label template, the defined number of consecutive records is "collected together" and will print on the same label, not on different labels.

For example, if you collect 10 records in the same dataset, one label will print, not 10 labels.

The records are merged together using the defined delimiter.

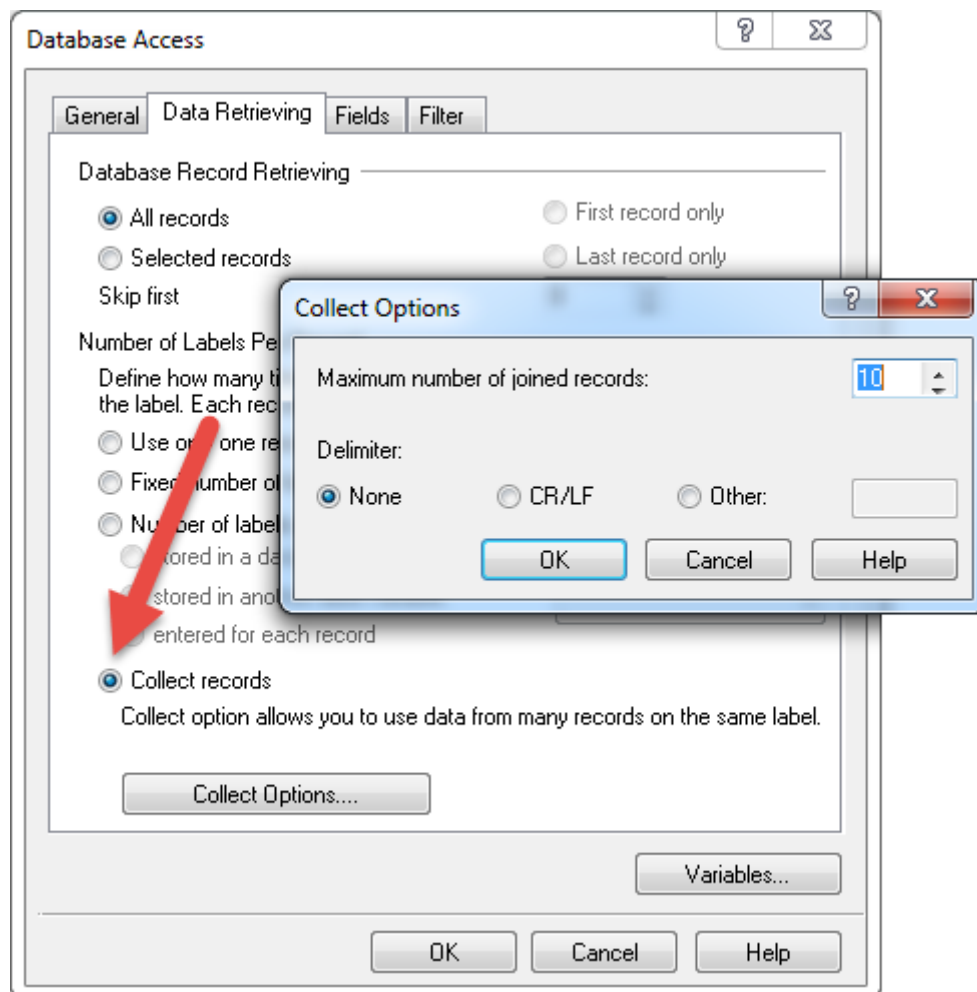


Figure 3: Option "Collect records" is supported in PowerForms Web

Updated Application Identifiers for GS1 support

NiceLabel software has been updated with the changes from the GS1 General Specifications Version 15, January 2014 (issue 2).

The following Application Identifiers have been removed from GS1 specification: 8100, 8101, 8102. They still exist in the software for backward compatibility.

The following Application Identifiers have been added: 7005 (Catch Area), 7006 (First Freeze Date), 7007 (Harvest Date), 7008 (Species for Fishery Purposes), 7009 (Fishing Gear Type), 7010 (Production Method).

NOTE: you need the application NiceLabel Pro V6.5 to be able to design a label with new Application Identifiers.