

Release Notes

NiceLabel 2019.1

©NiceLabel 2019

Contents

NICELABEL LABEL CLOUD	4
New and improved functionalities	4
Automated check for software updates	4
Download link for NiceLabel available on Documents tab	4
NiceLabel Control Center signing out idle users	4
Support for Google 2-step verification phone prompts	5
Simplified invitation of guest users	5
NEW IN DESIGNERS	6
Installation and activation improvements	6
Enhanced licensing error messages	6
New and improved functionalities	6
Format Painter to copy text format to other objects	6
Layer visualization improvement	7
Validation of characters in printer fonts	7
Correct styles for printer fonts displayed in ribbon	8
Preserving localized font names on systems with different locale	8
Updated support for GS1-128 specification (issue 19.0, January 2019)	8
Barcode library is updated to the latest version	8
NEW IN DESKTOP SOLUTIONS	9
New and improved functionalities	9
Print PDF action	9
Set Printer action no longer takes printer licenses	9
Adjustable timeout for the Execute SQL Statement action	9
NEW IN LABEL MANAGEMENT SYSTEM	11
Analytics	11
Installation and activation improvements	13
Warnings when runtime prerequisites are not met on servers and clients	13
Document management	14
Vision inspection support is added to print history	14
Previewing images and PDF files in DMS	14
Workflow duplication	15
Custom fonts are supported for label preview in DMS	16
Settings for sending emails (SMTP) are available in Versioning and Workflow page	16
Optimized email notifications	17
Print job history logs additional information	17
www.nicelabel.com	

Web Printing	18
A parameter to specify which Web Application to run	18
Support for local databases	18
Application selector in the Web Client	19
NiceLabel Web Client can be vendor-customized	19
Improved performance of file-based databases in document storage	20
Warning appears for more than 20 selected Web Application users	20
Users from Windows groups can run Web Applications	20
Web Printing server can access 32-bit databases	20
Integration System (Automation)	20
Configuring disabled printers and disabled ports	20
Automation - Local cache synchronization	21
Updated event logging	21
ADOPTING NICELABEL 2019	23
Useful Assets	23

NiceLabel Label Cloud

New and improved functionalities

Automated check for software updates

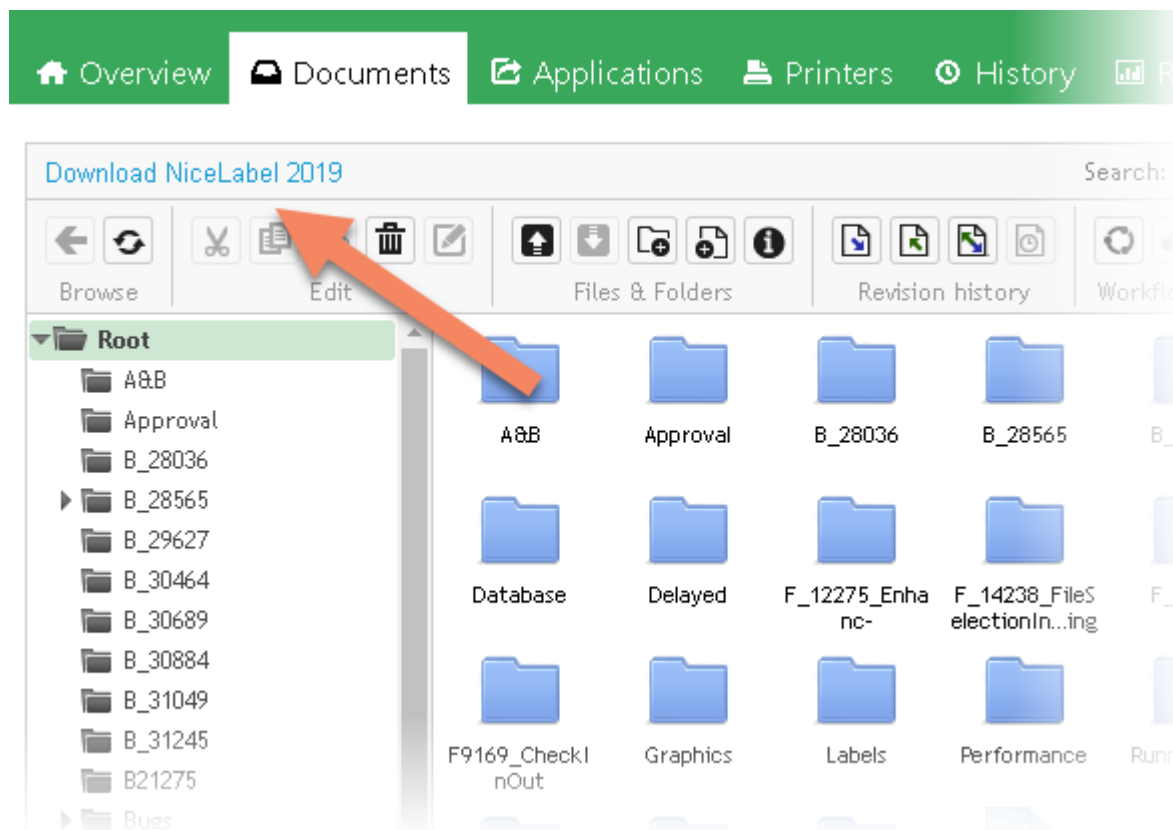
On each startup, NiceLabel Designer checks for client software updates from your Label Cloud account. After software updates become available, the download link shows up on the application's landing page.

NOTE: Software update checking is already supported for NiceLabel Designer activated with the on-premise license.

Download link for NiceLabel available on Documents tab

When you login into the Document Management System for your Label Cloud account, the download link for NiceLabel client is conveniently available on the Overview tab. However, the security permissions for your Access Roles might prevent users accessing the Overview tab.

The download link for NiceLabel Designer is now available on the Documents tab, next to the Search field. That makes the link available for all members of the "Author" user role that might not be able to see the Overview tab, but have access to the Documents tab.



NiceLabel Control Center signing out idle users

NiceLabel Control Center monitors individual user activities in the browser and keeps the session alive for as long as the user remains active. If users are idle for less than an hour, the session remains alive.

However, if the user is idle for more than an hour, the session expires and the user must sign-in again. The information about the expired session is clearly visible in the notification area of the NiceLabel Control Center.



Support for Google 2-step verification phone prompts

With 2-step verification, you enable stronger security for your Google account. Sign in requires something you know (password) and something you have (phone).

Whenever you sign in to Label Cloud account using the Google account enabled with the 2-step verification, you enter your Google password as you usually do. You see a reminder to check your phone to sign in. On your phone, you see a "Trying to sign in?" prompt from Google where you can tap **Yes**.

Instead of using the 2-step verification code for signing in, you can tap a prompt that Google sends to your phone. Signing in this way adds the security of the 2-step verification and is quicker than entering a verification code.

Simplified invitation of guest users

Guest users are users that are not members of the organization that is subscribed to the Label Cloud.

Guest users may have access to Web Applications and/or to the NiceLabel Control Center. In most cases, companies invite guest users to be able to run Web Applications, and not to have access to the NiceLabel Control Center. Typically, access to Control Center is allowed for organizational users only.

The guest user invitation dialog box has been redesigned to show more used parameters first. Now, the access to the web application is shown first, followed by the configuration of access roles for the NiceLabel Control Center. These remain empty for most configured guest users.

New in Designers

Installation and activation improvements

Enhanced licensing error messages

The NiceLabel error messages for licensing issues are now using user-friendly wording. The new messages provide plain English description of what went wrong.

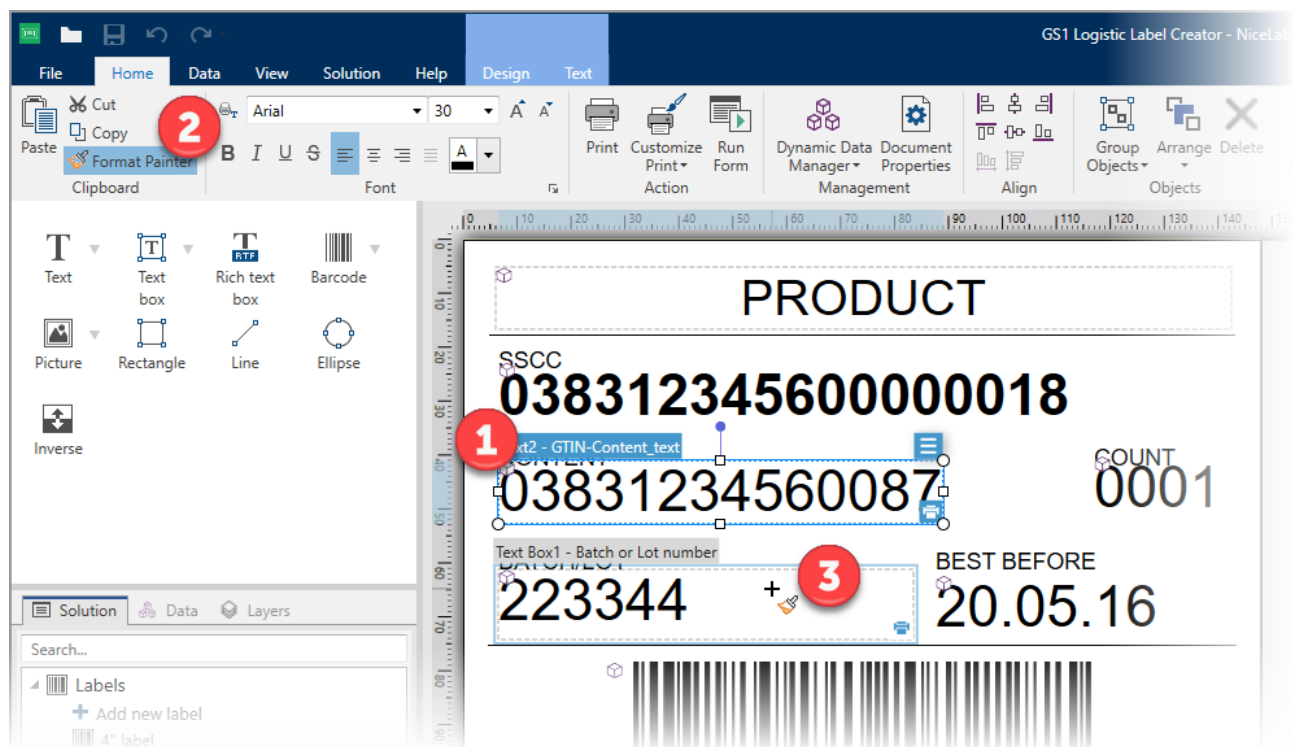
The error messages instruct on the possible steps to self-service the problem or include a link to escalate the problem to the members of Technical Support team.

New and improved functionalities

Format Painter to copy text format to other objects

Use the Format Painter on the Home tab to quickly apply the same formatting, such as color, font style and size to multiple text objects. The format painter lets you copy the formatting from one object and apply it to another one – think of it as copying and pasting for formatting. You can also copy the formatting for objects between the label templates and in the forms.

You would select the object that has the formatting that you want to copy. On the **Home** tab, click **Format Painter**. The pointer changes to the paintbrush icon. Select the other text object to apply the formatting. To apply the format to multiple object, select them in a selection frame.

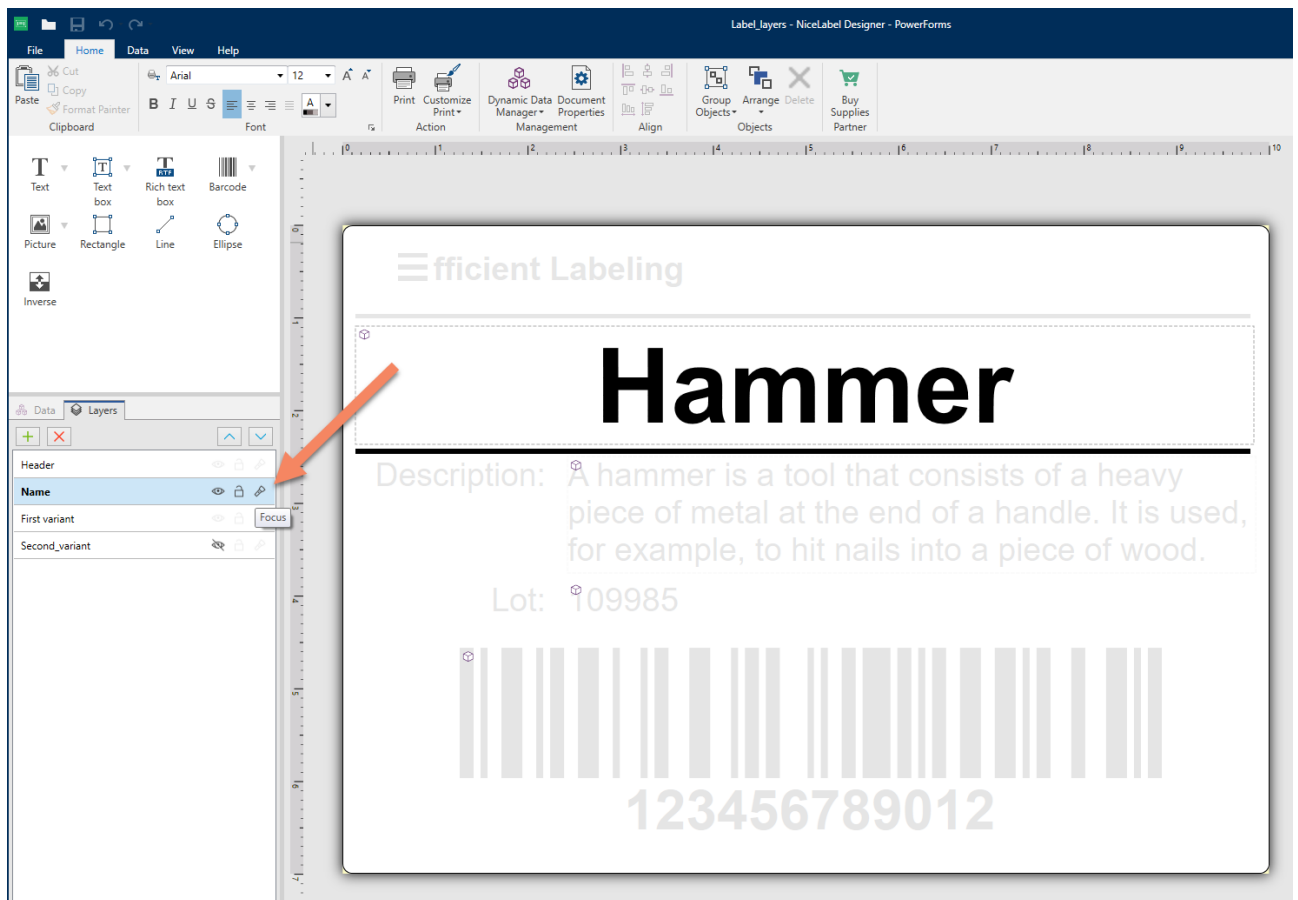


Alternatively, to change the format of multiple objects in the label template, select the original object, press the keyboard shortcut **Ctrl + Shift + C**, select the target objects in the label or in the form, and press the keyboard shortcut **Ctrl + Shift + V**.

Layer visualization improvement

In NiceLabel 2019.1, a new view on the layer objects is available to label and form designers.

When you hover a mouse on top of a certain layer, the objects positioned on that layer remain visible in the design area, while all objects from the other layers become transparent. The new view helps you identify the content that belongs to a specific layer without implicitly changing the layer's visibility. The new visualization option works for visible or hidden layers.



Validation of characters in printer fonts

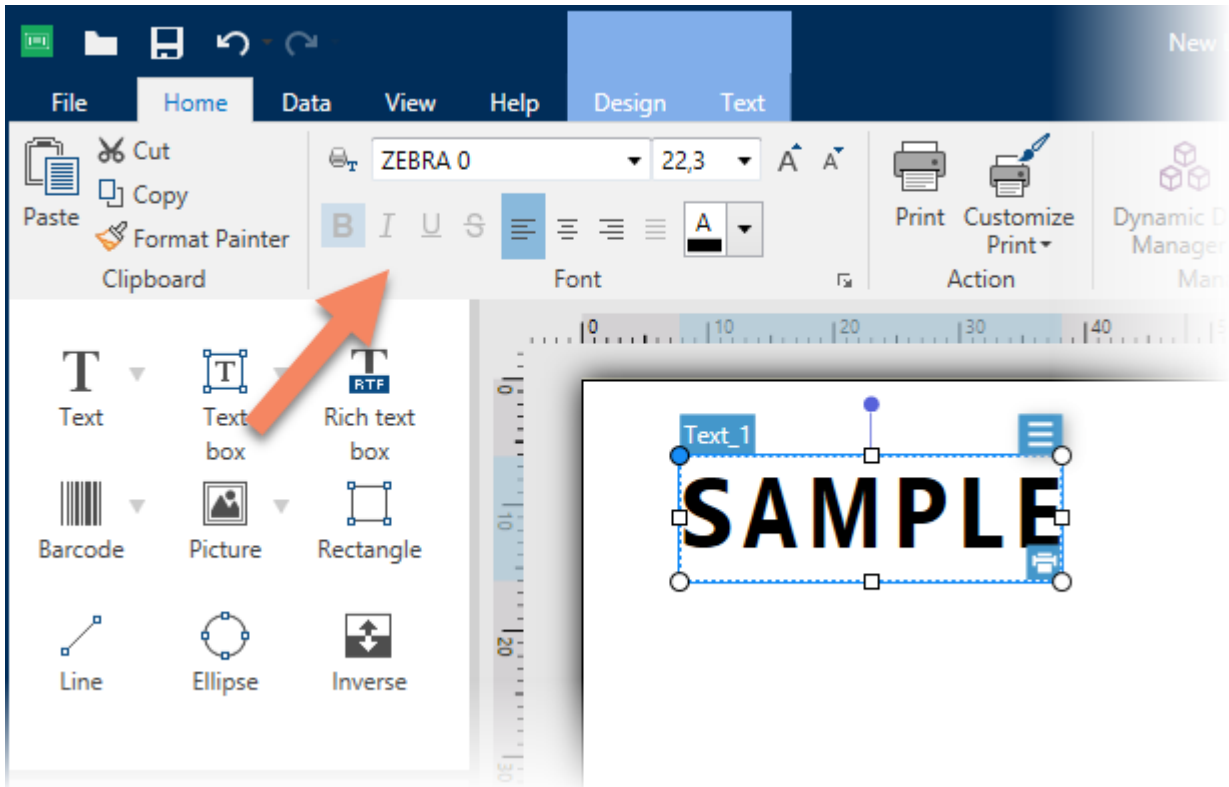
Label printers have certain fonts already built-in. NiceLabel refers to these fonts as "printer fonts". If the text objects in label templates use printer fonts, the data sent to the printer includes the actual characters from the text object. On the contrary, the text objects that use the TrueType fonts are converted to images and printed as graphics (GDI).

Printer fonts usually contain a subset of all available characters. For example, the Unicode characters are typically not supported. Some printer fonts imply even harsher limitations, such as "upper case letters only".

If you use printer fonts for your text objects and provide the characters that are not supported with the selected font, NiceLabel reports an error. Text objects with invalid content are clearly displayed in error state.

Correct styles for printer fonts displayed in ribbon

Printer fonts for label printers work differently than the TrueType fonts that are vector fonts. You can easily scale the vector fonts and apply many styles to them (e.g., bold, italic, underline). Many printer fonts are available just in specific sizes and styles.



For example, a printer font is available in a limited selection of point sizes, and in bold. NiceLabel Designer visually identifies which styles are supported for the selected printer font.

Preserving localized font names on systems with different locale

Certain fonts – especially Asian fonts – have dual names (localized name and English name) that depend on the system locale settings. This can cause issues when the label designed on a system with localized system is used on a system with English locale system.

In NiceLabel 2019.1, the font names are preserved and the label template always uses the correct font without regards to the locale settings on the target computer.

Updated support for GS1-128 specification (issue 19.0, January 2019)

GS1 support in the software has been updated according to the annual update of GS1 Specification (Release 19 from January 2019). There are new Application Identifiers (723s, 8009, and 8026). Certain identifiers have new descriptions (30,37, 8112). These Application Identifiers were also updated to meet the latest specification updates (410-415, 8110, 90).

Barcode library is updated to the latest version

NiceLabel uses a barcode library to render the images of some barcode types. The new version is more reliable and provides multiple bug fixes for barcode support.

New in desktop solutions

NOTE: The functionalities from this chapter are available in NiceLabel Automation module of appropriate level as well.

New and improved functionalities

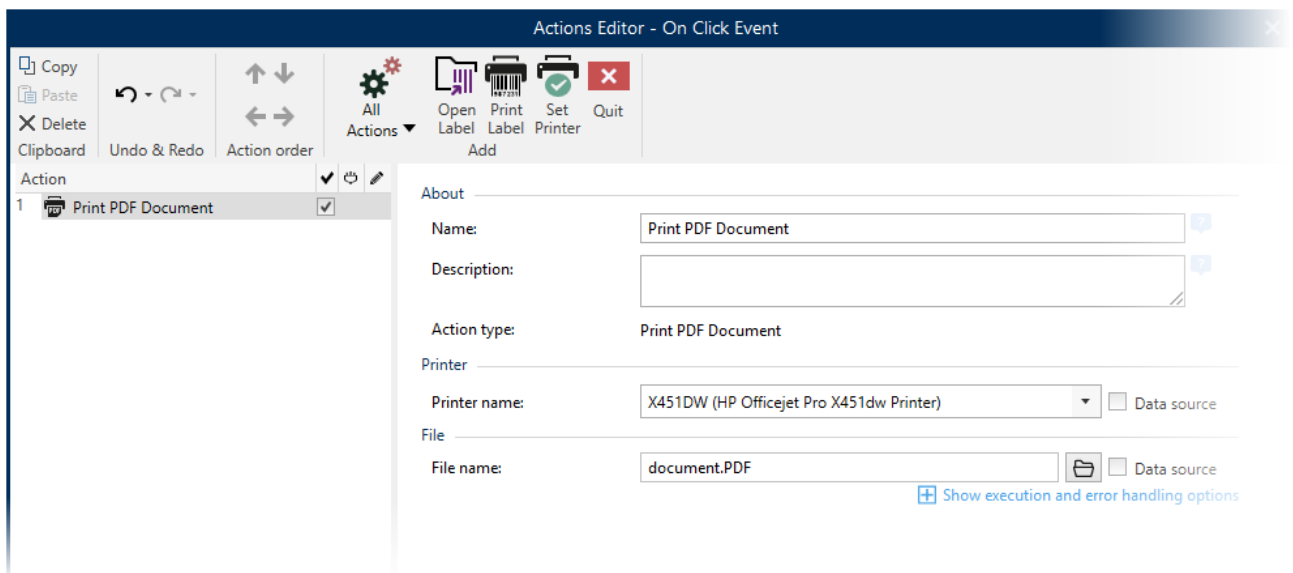
Print PDF action

NOTE: Product editions NiceLabel LMS Enterprise or higher include this feature.

The new Print PDF action prints the specified PDF file to any of the available printers. NiceLabel does not change the PDF file in any way and prints it as-is.

Make sure the PDF page size matches the dimensions of the installed media in your label printer. If you want to print PDF to thermal printer and the PDF uses barcodes embedded as graphic objects, make sure the barcode's resolution match the printer resolution.

Standard NiceLabel licensing applies when printing the PDF files. A license seat is taken for each unique printer.




Set Printer action no longer takes printer licenses

Set Printer action no longer consumes printer licenses, if you select a different printer driver before printing the label. The printer license is taken when you actually execute a "print label" activity.

Adjustable timeout for the Execute SQL Statement action

You would use the Execute SQL Statement action to interact with the SQL database, and run either create, read, update or delete (CRUD) operations. For example, you would collect additional data required for label printing and merge it with what the trigger has received, or you would update the ERP system with the status of the print job.

The action introduces the user-configurable setting for the execution timeout. The default timeout is 60 seconds. If the SQL server response is not received in the specified period of time, the action fails and reports an error. The "connection timeout" is taken from the default setting of the connection provider.

Action	✓	↺	✎
1  Execute SQL Statement	✓		

About




Name:

Description:

Action type:

Database Connection

SQL Statement

▶ Test  Insert data source  Export  Import

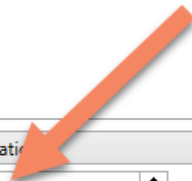
```
SELECT Order
FROM LabelsPerOrder
WHERE id = :Id
```

Execution mode:

Execution timeout:

Result

Save Data to Variable



New in Label Management System

Analytics

How many labels did my business print last month? Which printers do I use the most and which do I use least? How can I save money on label printing? In business environments we all need easy ways to keep track of users, computers, programs, printers and labels. NiceLabel Analytics in Control Center is a tool to help you do just that.

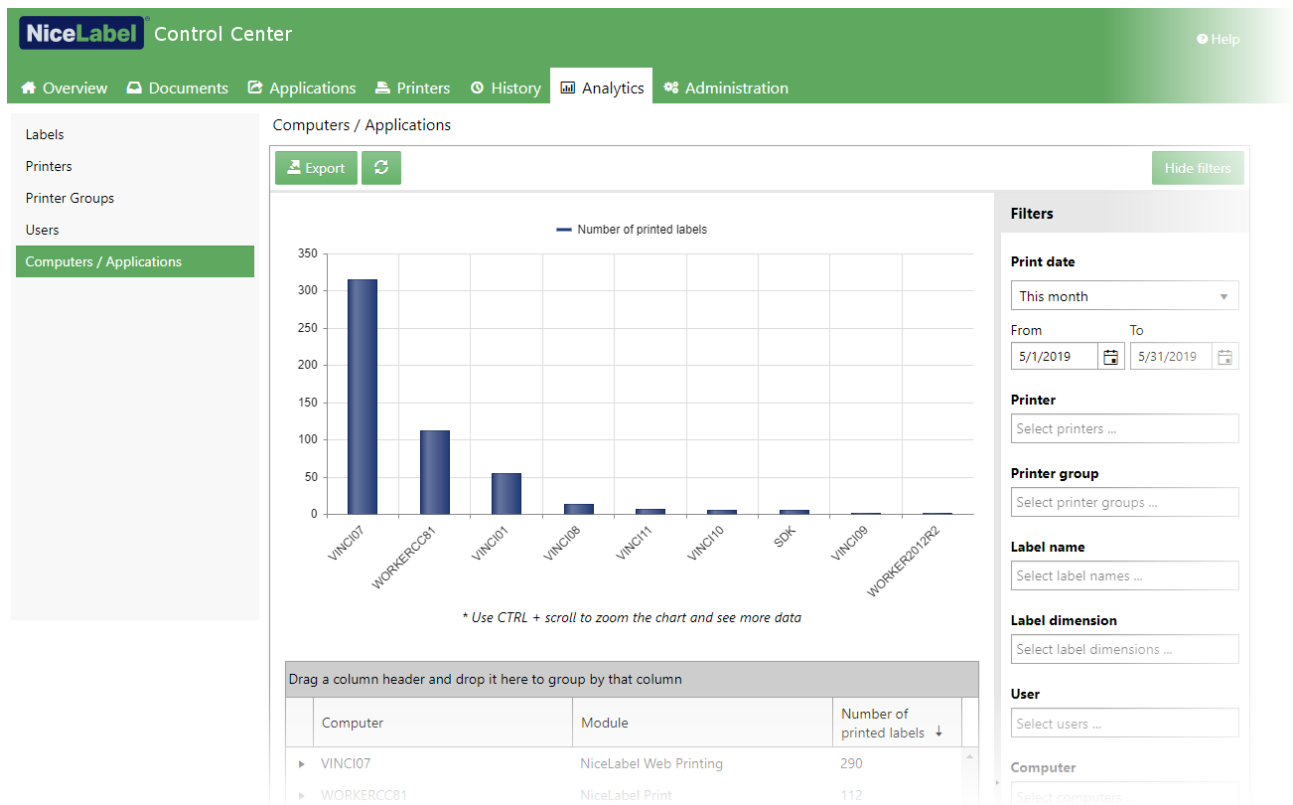
Analytics helps us make sense of our complicated printing environments. It works by taking all the data your system produces and organizing it for you in simple ways so you can understand it and use it to improve your printing process.

Analytics works in every printing environment from the small and simple to the most complicated and abstract. Analytics helps you know, which **users** print which **labels** from which **computers** with which **programs** on which **printers**.

You can quickly sort and find information you need with these data Filters and tabs:

- **Users**—labels they print, when they print them, printers/computers they use
- **Labels**—amounts printed, names, dimensions, stock numbers, printers used
- **Computers**—workstations, modules, labels printed
- **Modules**—Automation, Control Center, Designer, Print, Printer Driver, .NET API, Web Printing
- **Printers**—models, most used, labels printed
- **Printer Groups**—which groups, labels printed, amounts printed

Use Analytics to sort, monitor, and analyze your printing process in Control Center. Analytics helps you organize and plan your printing tasks, improve your printing processes, and find ways to decrease your printing costs.



To use Analytics, click the **Analytics** tab in your cloud-based or on-premise Control Center.

- **Optimizing Label Usage With Analytics**

Know which **labels** print on which **printers** and **how often**.

When you want to decrease labeling costs, use NiceLabel Analytics in Control Center to view and analyze which labels you print the most so you can get the biggest savings with the smallest changes to your labels.

- **Optimizing Printer Workloads With Analytics**

Know which **printers** print which **labels** and **how often**.

When your printing workloads are not evenly distributed between your printers, use NiceLabel Analytics in Control Center to view and analyze which printers print the most labels so you can more efficiently distribute your workloads. You can customize print date ranges and see specific printer data with Filters.

- **Optimizing Printer Group Workloads With Analytics**

Know which **printer groups** print which **labels** and **how often**.

When your printing workloads are not evenly distributed between your printer groups, use NiceLabel Analytics in Control Center to view and analyze which printer groups print the most labels so you can more efficiently distribute you workloads.

- **Optimizing User Workloads With Analytics**

Know which **users** print which **labels** on which **printers** and **how often**.

When your printing workloads are not evenly distributed between your users, use NiceLabel Analytics in Control Center to view and analyze which of your users print the most labels so you can more efficiently distribute your user workloads.

- **Optimizing Computer Workloads With Analytics**

Know which **computers** and which **programs** print which **labels** on which **printers** and **how often**.

When your printing workloads are not evenly distributed between your computers, use NiceLabel Analytics in Control Center to view and analyze which of your computers print the most labels so you can more efficiently distribute your workloads.

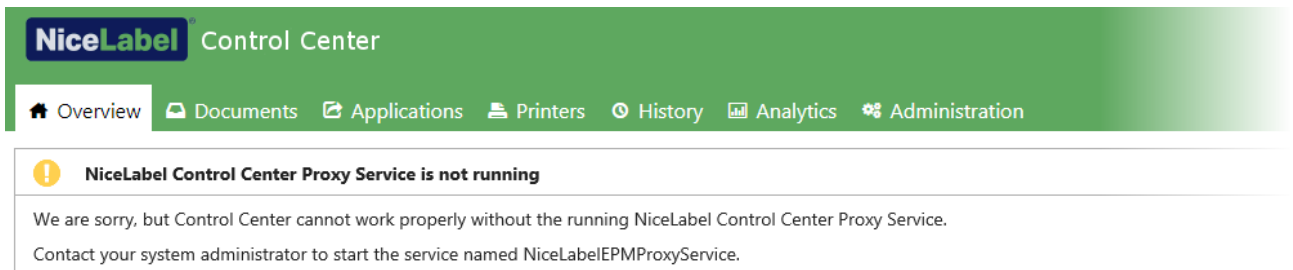
Use Analytics filters in NiceLabel Control Center to find data you need to understand your label printing processes. Apply multiple filters at once to fine-tune your data view and find exactly the data you need for analysis, investigation, and optimization.

Installation and activation improvements

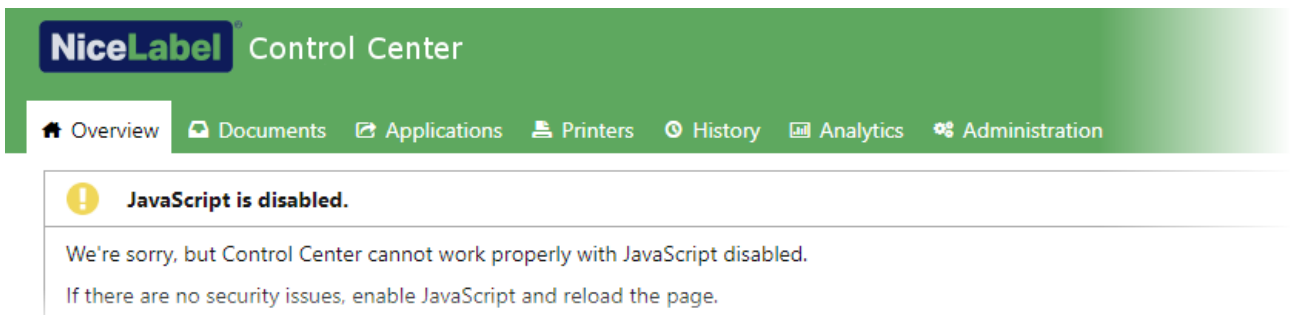
Warnings when runtime prerequisites are not met on servers and clients

NiceLabel Control Center displays a warning if the necessary system components are not running on the computer, where NiceLabel Control Center is installed. The Control Center depends on the NiceLabel Control Center Proxy Service service.

The warning is shown on Overview and Administration tabs.



NiceLabel Control Center also detects the missing client prerequisites and displays a warning if JavaScript is disabled in the user's browser.



Document management

Vision inspection support is added to print history

NOTE: On-premise product edition NiceLabel LMS Pro or higher is required for this feature.

After any NiceLabel application prints a label, it saves the complete event data in the print history, which is accessible in the Control Center History tab. The event data already included details, such as label name, timestamps, user name, all name-value pairs used in the label, label preview, and other fields. You can further use the filter to drill-down for the data.

With this release, vision inspection is part of the print history. When the label prints on the shop floor, the QA processes can be set in place to verify if the printed label meets the company's layout, content and quality guidelines. Depending on the requirements, vision inspection system grade the quality of the printed label or assesses the quality and/or presence of other objects as well.

A new field in the print history indicates whether the printed label passed or failed the vision inspection. The "vision inspection" field only appears in the user interface if visual inspection has been done for the current event.

It is the responsibility of the vision inspection system to connect to the NiceLabel's print history database, and to update the event data with vision inspection status (e.g. True/False).

Details Label Print

Status: Printed

Label Name: http://trainertemp:8080/Demo/label.nlbl

Label Revision: 1

Requested Quantity: 1

Begin Print Time: 5/6/2019 3:45:10 PM

End Print Time: 5/6/2019 3:45:10 PM

Printer: ZEBRA R-402

Metadata:

Workstation: TRAINERTEMP

User: ADMINISTRATOR

Vision inspection: Passed

Label Jobs

Job 1 of 1

ID: 1
Quantity: 1
Status: Spooled

Variables

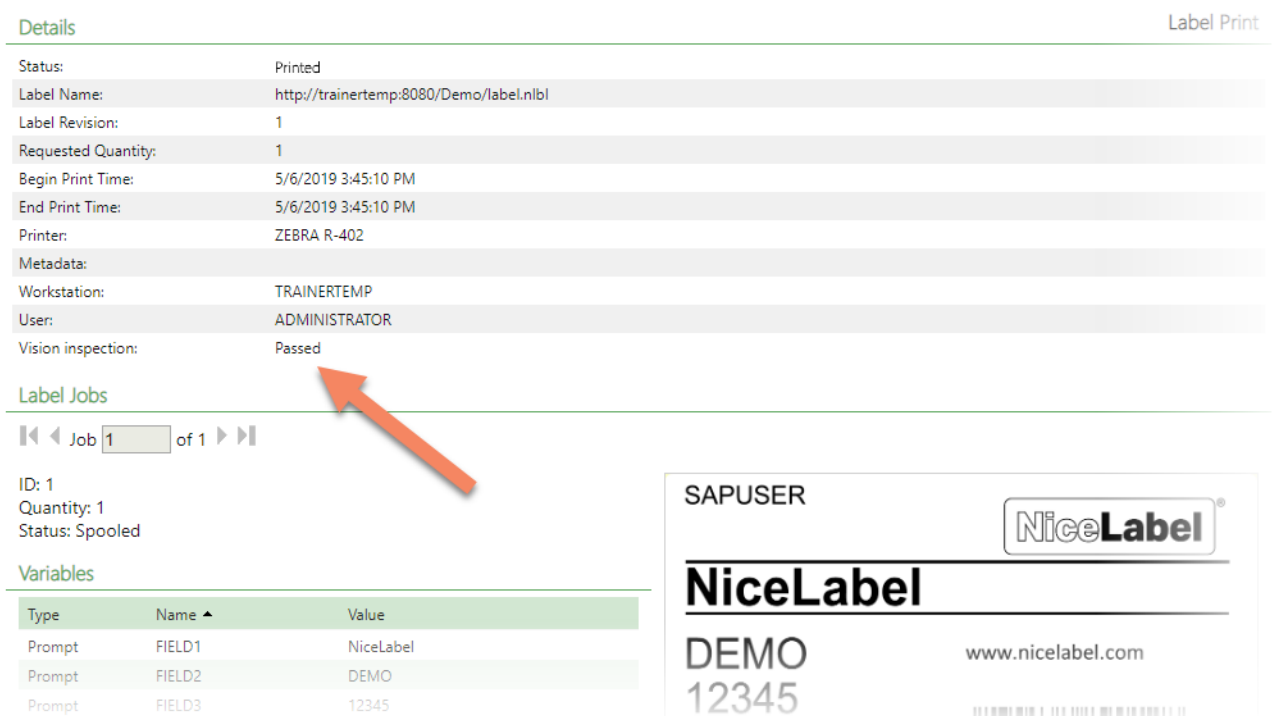
Type	Name	Value
Prompt	FIELD1	NiceLabel
Prompt	FIELD2	DEMO
Prompt	FIELD3	12345

SAPUSER NiceLabel®

NiceLabel

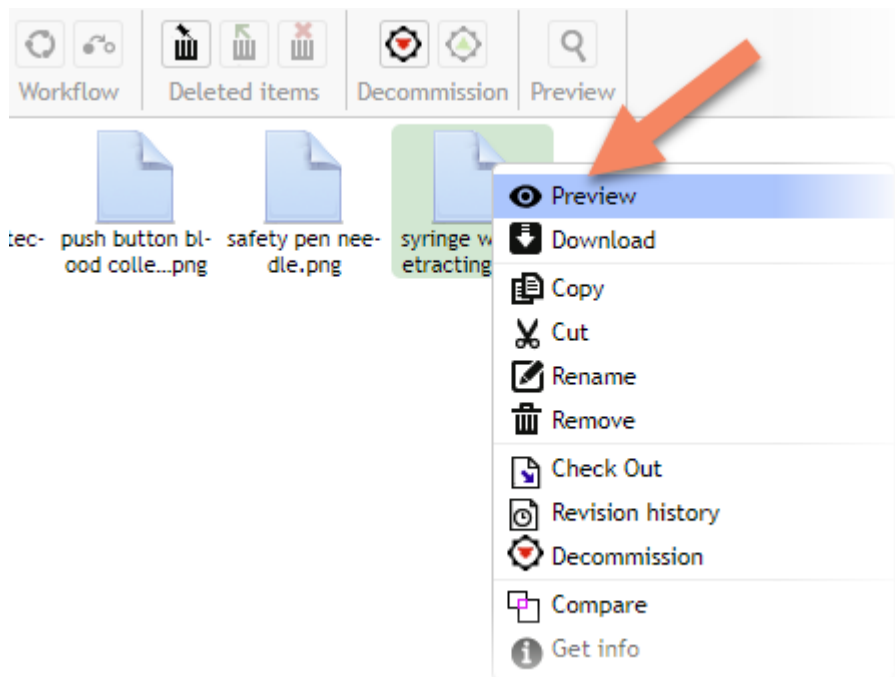
DEMO www.nicelabel.com

12345



Previewing images and PDF files in DMS

With this release, you can preview graphic and PDF files directly in the NiceLabel Control Center. Double-clicking no longer downloads the file, but opens a preview in another browser tab. Right-clicking the file and selecting Preview does the same.



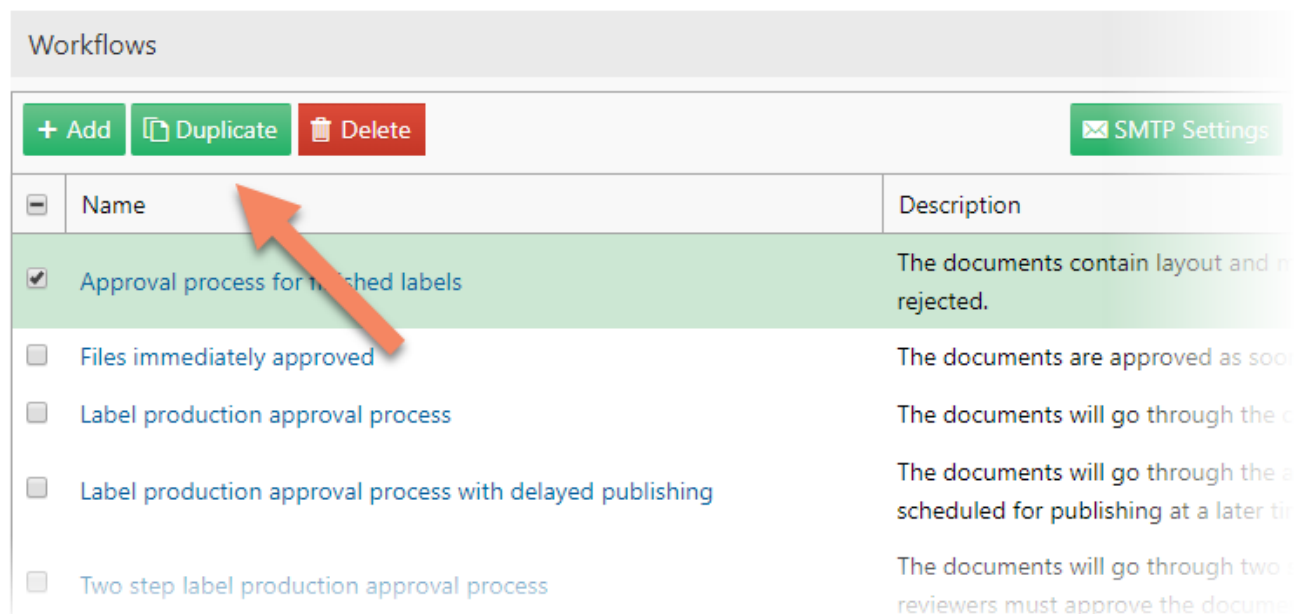
The preview supports the following file types: BMP, PNG, JPEG, GIF, TIF, WMF, EMF, and PDF.

NOTE: Your browser must also support the selected image type. For example, WMF will open in Microsoft Internet Explorer, but not in Google Chrome or Microsoft Edge.

Workflow duplication

With this release, you can duplicate the existing workflow process, and customize the copied workflow.

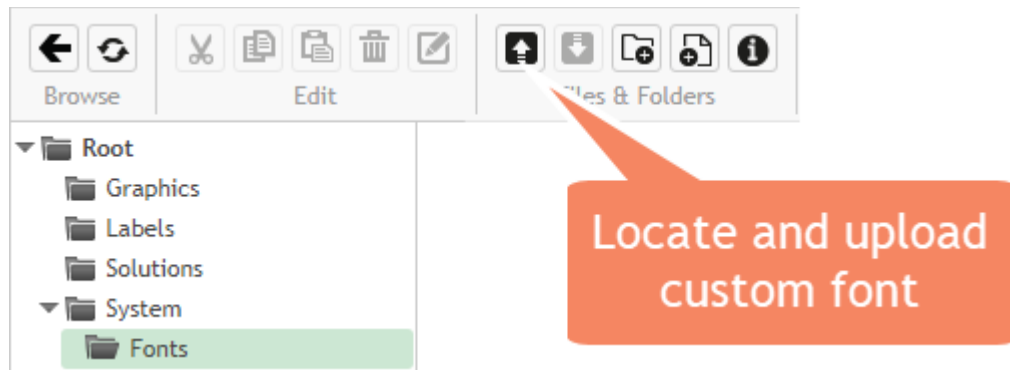
This feature saves a lot of time if you have to create a complex workflow process, but majority of the process is already configured with the existing workflow.



Custom fonts are supported for label preview in DMS

Custom fonts are the fonts that are not installed with Windows, but have been added to the system at a later time. NiceLabel Designer can use these fonts in the label templates, and display the labels correctly because the fonts are installed on the same computer.

Typically, you would not have these fonts available on a computer with the installed on-premise Control Center. If you use Label Cloud, there is even no "server computer" you can connect to.

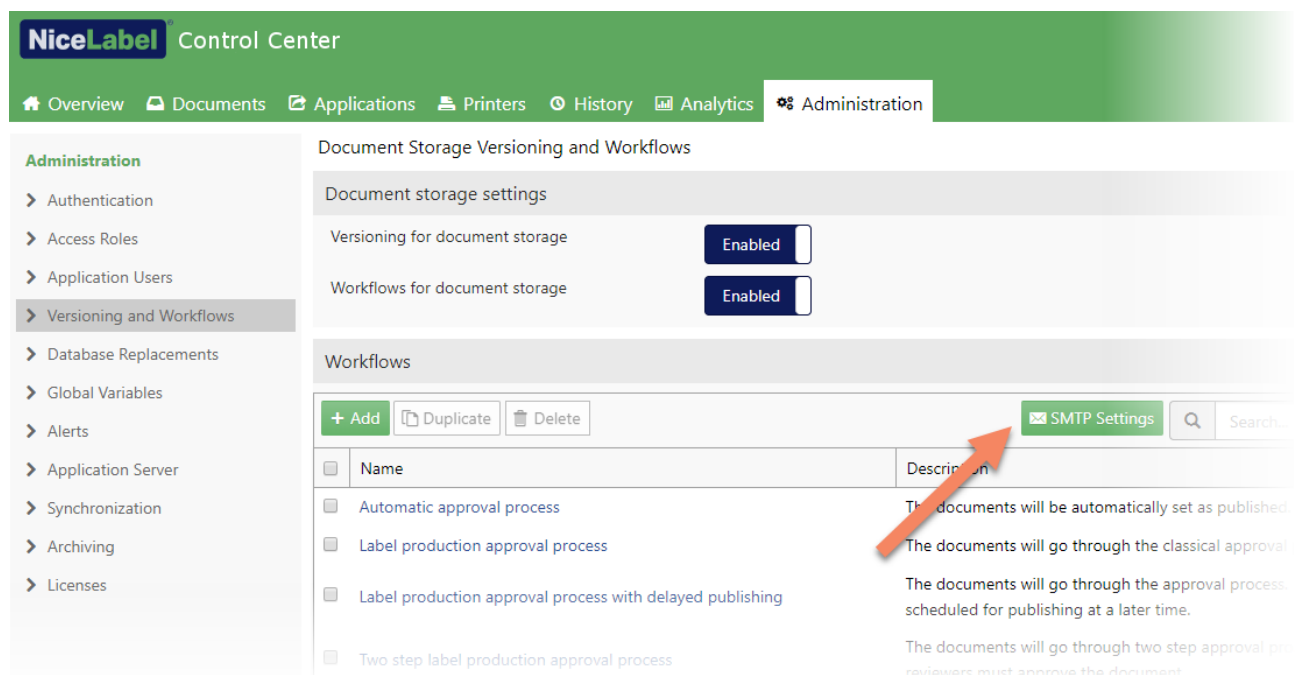


With this release, you can store the custom fonts in document storage, and make them available for label previews. The dedicated font storing location in your document storage is /System/Fonts.

NOTE: Make sure you have the legal right to use the uploaded custom fonts before you design and publish your labels.

Settings for sending emails (SMTP) are available in Versioning and Workflow page

When using lifecycle management in NiceLabel software, you can configure the system to send out notification messages to the next person(s) in the workflow process. The person receives an email with instructions on what to do.



To notify the user about the workflow steps changes, you must configure NiceLabel to use server for the outbound emails (SMTP server). Now, these settings are available also in the Versioning and Workflows page under Administration.

The same set of settings is still available on the Alerts page. These settings are mainly used when configuring alerts based on the collected feedback from printing stations and printers.

Optimized email notifications

When you promote the file to the next step in the workflow process, NiceLabel sends the email notification to the next person in the line of command. NiceLabel no longer sends a single email per each updated file, but intelligently sends just one mail to each recipient.

Workflow step changed
Browse to [Control Center](#) to review the files.

File	Workflow step	Comment
Access_Label.nlbl	Approved	These labels can be used in production.
GS1-128.nlbl	Approved	These labels can be used in production.
Label_layers.nlbl		Is can be used in production.
Nutrition Table.nlbl		Is can be used in production.

This is a system-generated message.

This reduces the amount of emails a person might receive. The optimization is noticeable when updating the workflow step for multiple files simultaneously. Each email notification contains links to all relevant files.

Print job history logs additional information

To increase the visibility of print processes, NiceLabel collects more information about the print events, and stores more data into the history logs. You can locate the necessary information in the History tab easier and with more search control. The newly collected data is also used in the Analytics tab.

The following additional data is saved in the history log:

- Identification for the "Web Printing" module when printing labels from NiceLabel Web Client. Previously, the print events from Web Client were logged as printed from "NiceLabel Print".
- Added stock name after creating labels from stocks.
- Added label and page sizes.
- Added details for the print job: label and page dimensions, paper type (automatic or sheet), paper format ID (A4, letter, etc.)
- Added label job details: actual label dimensions, current page.
- Label height is set to 0 if the label has enabled variable height.
- Dimensions are logged with user units and unit of measurement.

Web Printing

A parameter to specify which Web Application to run

Users that have assigned many web applications must select the required Web application in a list that displays each time the Web client runs.

The new parameters allows injecting the name of the target Web application in the URI at the integration point. The Web client opens the specified Web application without any prompt for the operator. This is a useful shortcut when integrating Web Printing into existing web-based business system, for which you know exactly which Web application must run.

For example, the web-based business system executes the following URI:

```
nicelabelwebclient:?server=https://demo.onnicelabel.com/print&application=UDI&openMode=2&variable=GTIN=00311234567901&variable=ProductName=Retracting%20Needle
```

to do the following:

- Run the Web application "**UDI**".
- Refresh the data layer if the Web application is already running (**openmode=2**).
- Set variable **GTIN** to "**00311234567901**".
- Set variable **ProductName** to "**Retracting Needle**".

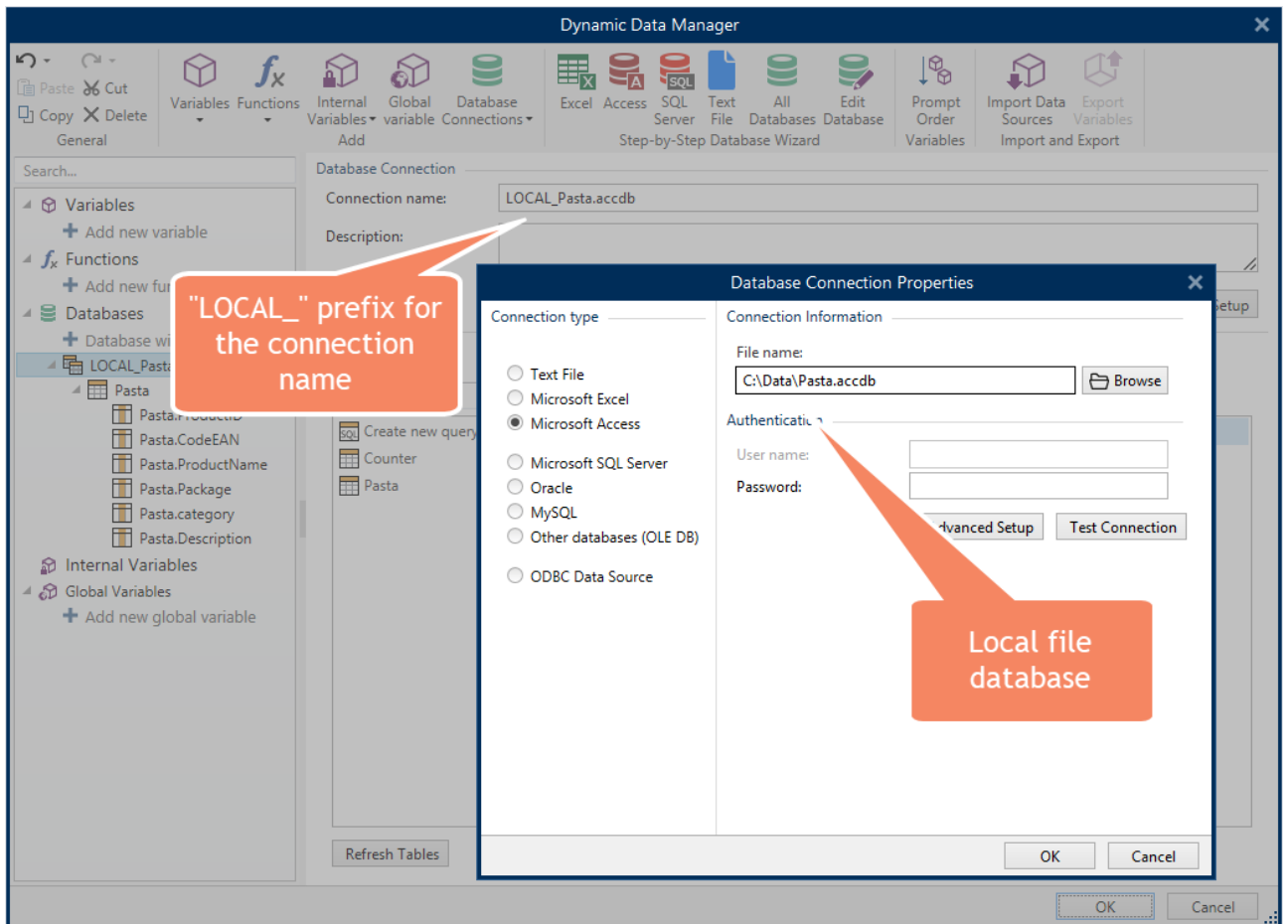
Support for local databases

Until now, the Web Client could only connect to the database sources that were accessible from the server (the computer, which runs **NiceLabel Web Printing**). The Web Client sends all requests for database data to the Web Printing server, which made the database connection, retrieved the data, and provided response. Web Printing server acted as a proxy between the Web Client and the database.

With this release, the Web Client can use local database sources. These are the databases from the environment, in which the Web client runs. These might be local MS Excel or MS Access files, MSSQL databases, or any other database sources for which you have:

- installed the necessary database drivers
- access permissions

When creating printing solutions for the user in NiceLabel Designer, you must add the "LOCAL_" prefix at the beginning of the database connection name. This tells the Web Client to connect to the database source locally, bypassing the Web Printing server.

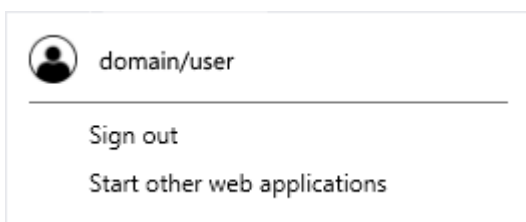


The Web Applications are frequently used to extend the standardized labeling to suppliers, contract manufacturers, or 3PLs. You can give them access to labeling, while maintaining centralized control over the design of label templates. The partners can use your labels with the data coming from their local business system.

Application selector in the Web Client

Using the Web Client you can either run one or multiple Web Applications. If you have multiple assigned applications, you have to select the correct one after you start your Web Client.

You can now quickly switch to other Web Applications. Your user name in the Web Client caption expands a menu, using which you select the **Start other web application** option.



NiceLabel Web Client can be vendor-customized

NiceLabel software supports OEM customization of the visuals that the user can see. The available visuals are splash screen, partner logotypes, and contact information displayed in Designer and in the print application. You can also include the call to action to direct the users to partner's web pages using a "Buy supplies" button.

The same kind of vendor customization is now available with NiceLabel Web Client. The default print form displays partner logotype and contact information out-of-the-box.

Improved performance of file-based databases in document storage

Typically, you store your label templates inside your document storage and manage their lifecycle using the workflow processes. However, you can also save other file types inside the document storage. Some users prefer keeping their Excel or Access files close to the label templates.

We have optimized the usage of file-based databases if they are accessed from the document storage. With this release, you can experience faster access to the data coming from Excel or Access files, and more responsive printing applications.

Warning appears for more than 20 selected Web Application users

If you select more than twenty users or groups for a single Web Application, the notification displays whether you are sure to add that many users at the same time.

This sanity check prevents sending unintentional invites to too many users.

Users from Windows groups can run Web Applications

After you publish Web Applications, you must configure users that can run them. With this release, you can also add Windows groups to the list of authorized users. All members of the selected Windows group can run these Web Applications.

Web Printing server can access 32-bit databases

Web printing server can now access 32-bit databases even if the website runs as 64-bit. You no longer have to reconfigure the application pool **EPMWebPrintingAppPool** for 32-bit applications. The 32-bit databases are accessed via Web Printing proxy service. You can use 32-bit or 64-bit database providers from your Web client.

Integration System (Automation)

Configuring disabled printers and disabled ports

You can configure NiceLabel Automation to ignore certain printers. When the user prints label to a printer on a "disabled list", the print action is canceled. You can prevent using specific printers by their names or by specific ports.

NiceLabel Automation predefines some combinations of names and ports, such as "Microsoft XPS Document Writer", "Microsoft Print to PDF", or port name "FILE:". These printers and ports cannot be used in Automation as they prompt the user for the location of the created files. NiceLabel Automation is a service application and is running in the background. As such, it cannot interact with the desktop to prompt the user for such data.

To print labels to PDF files, use the action **Redirect Printing to PDF**.

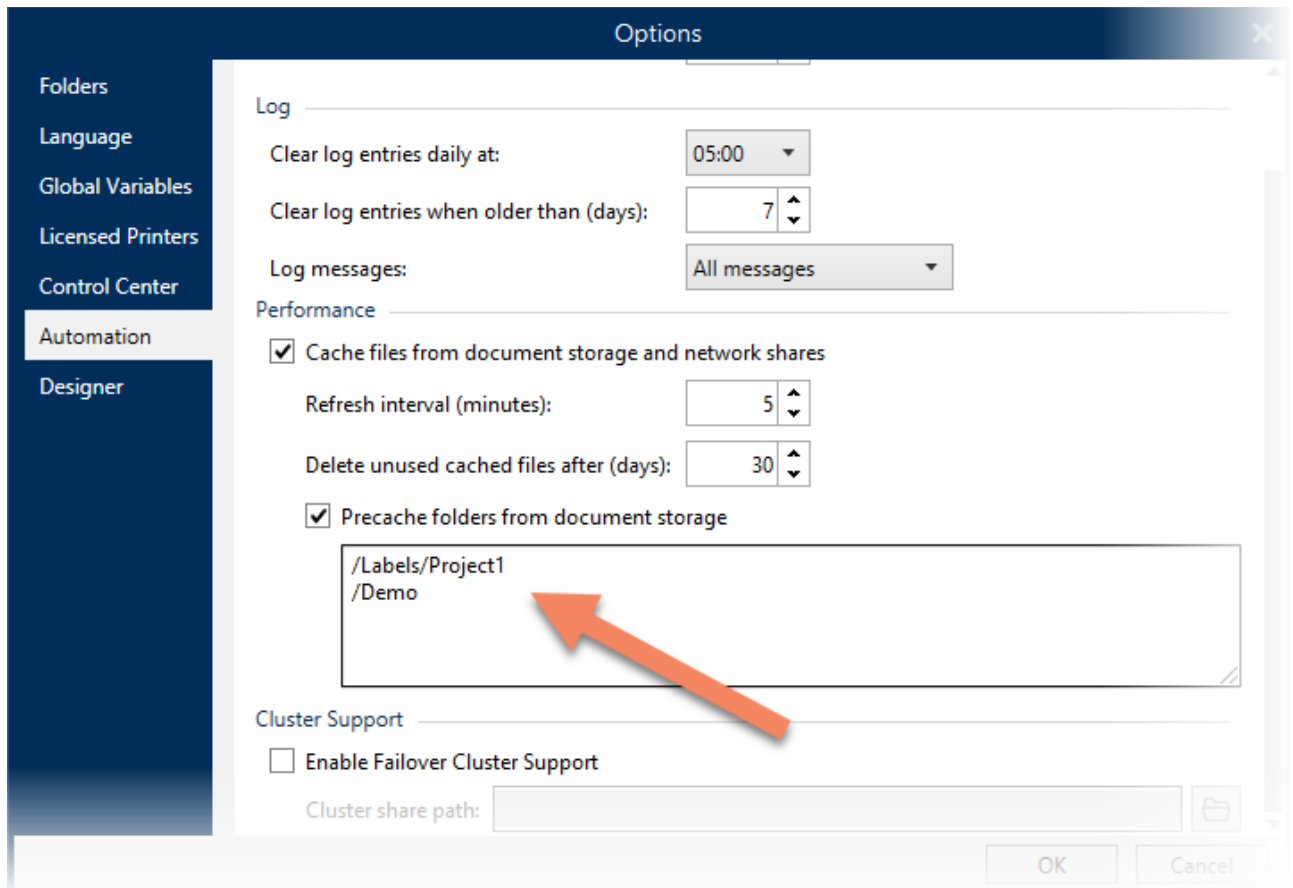
To print labels to files, use the action **Redirect Printing to File**.

The list of disabled printers and ports is user-serviceable in the product .config configuration file.

Automation - Local cache synchronization

You can speed up NiceLabel Automation's processing speed by pre-loading the files needed for label print to the local drive. After you enable the caching option, all network files are cached the first time they are accessed. The background synchronization process makes sure the local copy is always synchronized with the network original.

However, this can result in longer first time access, as the file must be copied before it can be used. With this release, NiceLabel Automation introduces the new "precache synchronization" from the document storage.



You can configure the document storage folders that must all be available locally. All content from the selected folders is copied locally as soon as you confirm the selection. The folders are also added to background synchronization task, so the local copy is updated with every change in the originals.

Updated event logging

You can configure NiceLabel Automation to log messages coming in from trigger execution in various depths. You can choose between the following levels "Error", "Warning", and "Information". However, when selecting "Error" and/or "Warning", the Manager would only report the failed action, and not all the actions in front of the failed one. When troubleshooting a failed trigger, you should see the complete trigger context, not just the failed action.

From this release on, NiceLabel Automation internally logs all messages from the trigger execution. You can see the details for all successfully executed actions in a trigger leading to the failed action.

On busy systems serving printers 24/7, keeping that amount of logging details might have performance effect on Automation. The housekeeping process to keep log database in shape has been optimized to clean the excess data when it becomes obsolete.

Adopting NiceLabel 2019

Useful Assets

- [Release Notes](#)
- [NiceLabel Label Cloud getting started](#)
- [NiceLabel 2019 Licensing](#) document
- [Installation Guides](#)¹
- [User Guides](#)¹
- [Technical specifications](#)
- [Training videos and tutorials](#)
- [NiceLabel 2019 Compatibility knowledge base article](#) lists the changes with previous generation of NiceLabel products

¹ Localized versions of document are available online. See [Product and User Guides](#) page.

Americas
+1-262-784-2456
sales.americas@nicelabel.com

EMEA
+386 4280 5000
sales@nicelabel.com

Germany
+49 6104 68 99 80
sales@nicelabel.de

China
+86 21 6249 0371
sales@nicelabel.cn

www.nicelabel.com