

NiceLabel LMS

Installation Guide for Single Server Deployment

Rev-1702 ©NiceLabel 2017.

1 Contents

1 Contents	2
2 Architecture	3
2.1 Server Components and Roles	3
2.2 Client Components	3
3 Prerequisites	4
3.1 System Requirements	4
3.2 Installation Prerequisites	5
4 Installing NiceLabel LMS	6
4.1 Installing Control Center	6
4.2 Installing Web Printing Site	11
4.3 Installing Support for WebDAV	13
4.3.1 Enabling WebClient Service to use "Automatic" Startup Type	13
4.3.2 Installing Desktop Experience	14
4.3.3 Installing WebDAV redirector	16
5 Activation	18
6 Accessing NiceLabel LMS	19
6.1 Access from Internal Network	19
6.2 Access from Internet	19
6.2.1 Port Forwarding	19
6.2.2 Other Methods	20
7 Support	21
7.1 Online Self-help	21
7.2 Contacting Technical Support	21

2 Architecture

NiceLabel LMS uses the client-server model of computing, using which the server provides resources (such as consolidated storage of files and history of printing events), and the client provides label design and printout functionality. Print client is available as a desktop client for on-premise computers and as a Web client for remote users connecting over the Internet. Clients and server communicate over a computer network using the TCP/IP protocol.

This installation guide provides installation steps for the single-server deployment scenario. In this case, all server components are installed on the same computer.

WARNING: In this document, we are using **Windows Server 2016** and **Microsoft SQL Server 2016 Express**. Similar installation steps are necessary with other supported Windows operating systems or other supported versions of Microsoft SQL Server.

NOTE: For instructions on how to install NiceLabel components on multiple servers and in multi-tier environments, see more detailed **NiceLabel Control Center Installation Guide** and **NiceLabel Web Printing Installation Guide**.

2.1 Server Components And Roles

These are the components that you have to install and/or configure on the server.

- **Web applications (Control Center and Web Printing).** These are the main Control Center software components that run on Microsoft Internet Information Services (IIS) using .NET platform.
- **Database back-end.** This is the database server that runs Microsoft SQL Server and hosts the Control Center database.

2.2 Client Components

There are two types of client components.

- **NiceLabel 2017.** This client provides label and application designer, and desktop print application. NiceLabel 2017 is installed on the on-premise computers.
- **NiceLabel Web client.** This is the print application for Web printing. You would install it on the print stations, located either on-premise or on external computers.

3 Prerequisites

3.1 System Requirements

□ Hardware and software requirements

- CPU: Intel or compatible x86 family processor
- Memory: 2 GB or more RAM
- Hard drive: 1 GB of available disk space
- 32-bit or 64-bit Windows operating systems: Windows Server 2008 R2, Windows 7, Windows 8, Windows 8.1, Windows Server 2012, Windows Server 2012 R2, Windows 10, Windows Server 2016 (Windows Server Core and Windows Nano Server are not supported)
- Microsoft .NET Framework Version 4.5 or higher
- Display: 1366 × 768 or higher resolution monitor
- Recommended printer drivers: NiceLabel printer driver V5.1 or higher

Additional Requirements for NiceLabel Control Center and NiceLabel PowerForms Web Components

- Recommended browsers: Internet Explorer 9+, Google Chrome (latest), Mozilla Firefox (latest)
- Enabled JavaScript in web browser
- Installed at least one printer driver. The label preview functionality requires at least one printer driver to be installed on the Control Center server.
- Enabled TLS 1.0 protocol in Windows. By default, this protocol is enabled in Windows operating system. If you have it disabled, make sure to re-enable it during the installation.

You can install NiceLabel LMS on physical or virtual computer.

TIP: To keep the setup as simple as possible, NiceLabel recommends you to install NiceLabel LMS on a dedicated computer. This helps you avoid potential conflicts with existing software.

- | | |
|--------------------------|---|
| <input type="checkbox"/> | <p>Database server</p> <p>You need any of the following: Microsoft SQL Server 2005, Microsoft SQL Server 2008, Microsoft SQL Server 2012, Microsoft SQL Server 2014, Microsoft SQL Server 2016 (Express Edition of products listed above are also supported)</p> <p>SQL Server is required for installing the NiceLabel database (default database name is NiceAN).</p> <p>Microsoft SQL Server 2016 Express is included on NiceLabel DVD and will be started during Control Center installation.</p> |
| <input type="checkbox"/> | <p>Web server</p> <p>Internet Information Services (IIS) 7 or later is required. This Web server is provided with Windows operating system. It will be automatically enabled and configured during Control Center installation.</p> <p>The IIS is required to run Control Center and Web Printing sites.</p> |

3.2 Installation Prerequisites

- | | |
|--------------------------|---|
| <input type="checkbox"/> | <p>Administrative Windows login</p> <p>To install all prerequisites and NiceLabel LMS itself, log in as a user with administrative privileges, usually Administrator. This gives you full access to the server.</p> |
| <input type="checkbox"/> | <p>Internet access</p> <ul style="list-style-type: none">• For software activation. Internet access is required for activating the NiceLabel LMS license.• For Web Printing access. Internet access is required for remote Web Printing users to access the server. |
| <input type="checkbox"/> | <p>Member of the IT team on standby</p> <p>To make Web Printing functionality in NiceLabel LMS accessible to external users connecting from the Internet, reconfigure your network equipment (router / firewall).</p> |

4 Installing NiceLabel LMS

4.1 Installing Control Center

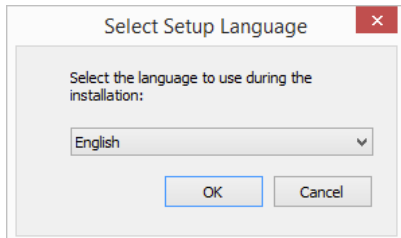
NOTE: The instructions below assume you are installing the software from DVD. If you have downloaded the installer, run the file **NiceLabelControlCenter2017.exe** and continue with step 6.

Complete the following steps:

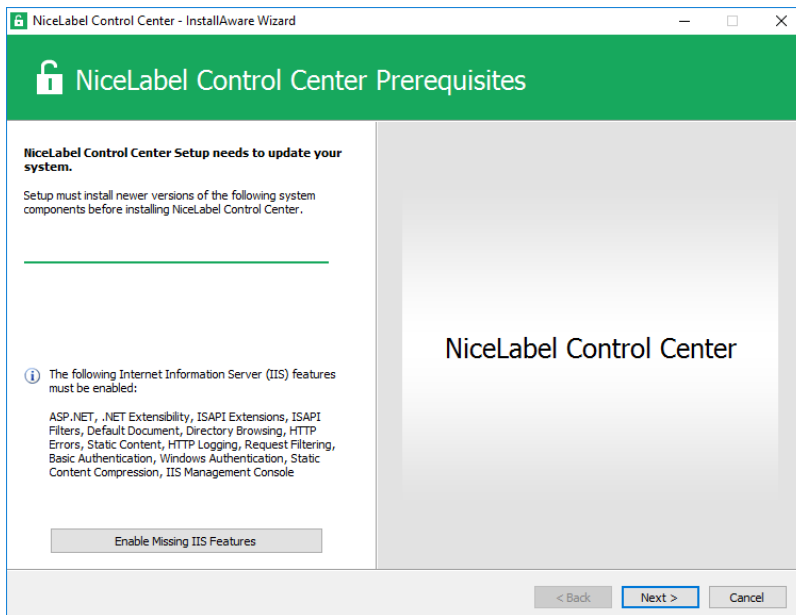
1. Log in to server as user with local administrative permissions, such as local **Administrator** user account.
2. Close all open applications before starting the installer.
3. Insert the NiceLabel DVD.

NOTE: If the application menu does not start automatically, double-click `Start.exe`.

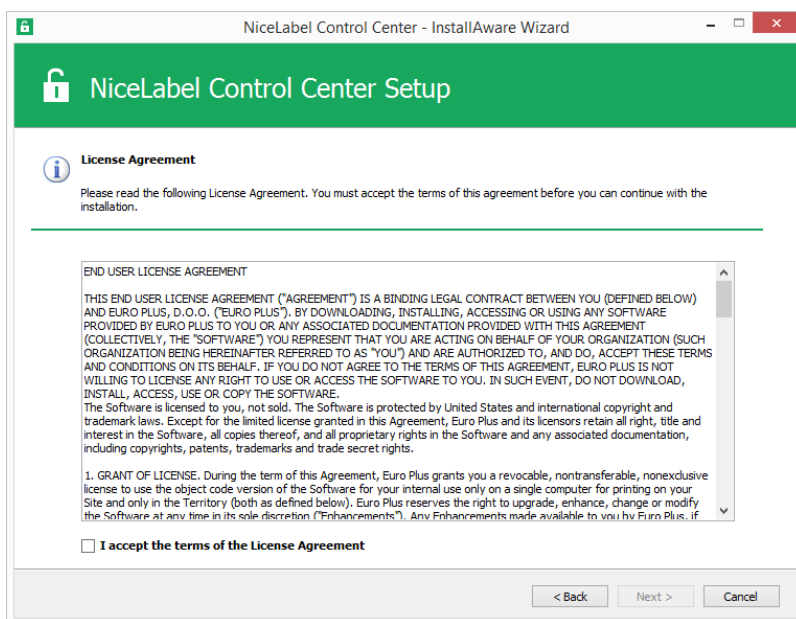
4. Select **Install NiceLabel LMS**.
5. Select **NiceLabel Control Center**.
6. Select installer language. Click **OK**.



7. Installer verifies that the IIS and all of the required features are available. If some pre-requisites are missing or currently disabled, click button **Enable Missing IIS Features** to install or enable them.



8. Accept license agreement. Click **Next**.

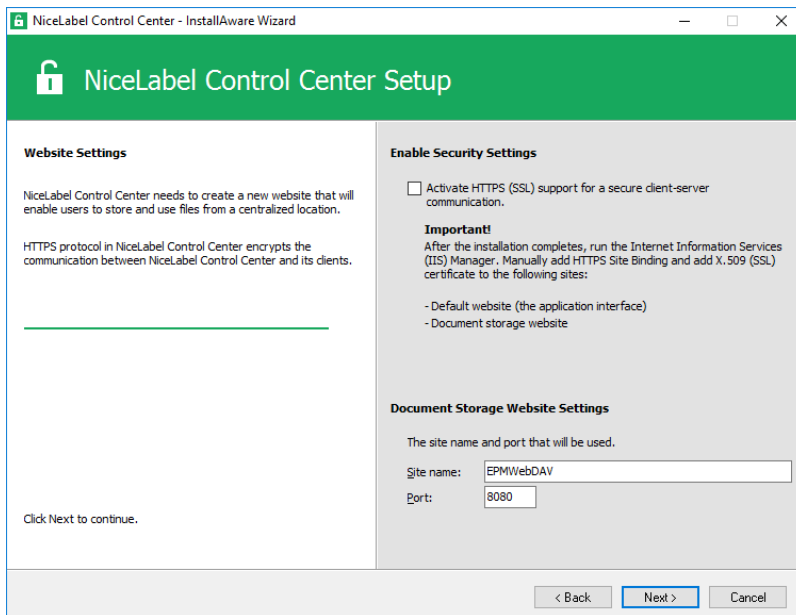


9. Enter user information. Click **Next**.

10. Accept the default folder to store the Control Center files. Click **Next**.

11. Accept the default Start Menu folder into which the shortcuts will be placed. Click **Next**.

12. Accept WebDAV site settings. This site is the WebDAV entry point into the **Document Storage** for all applications that work with its files. This site will be installed in the IIS on the current computer.



WARNING: Make sure the entered port number is not in use by any other application on this machine. The port might be used by a site in IIS, or by some other application. If this is a dedicated machine for NiceLabel software, the port is free.

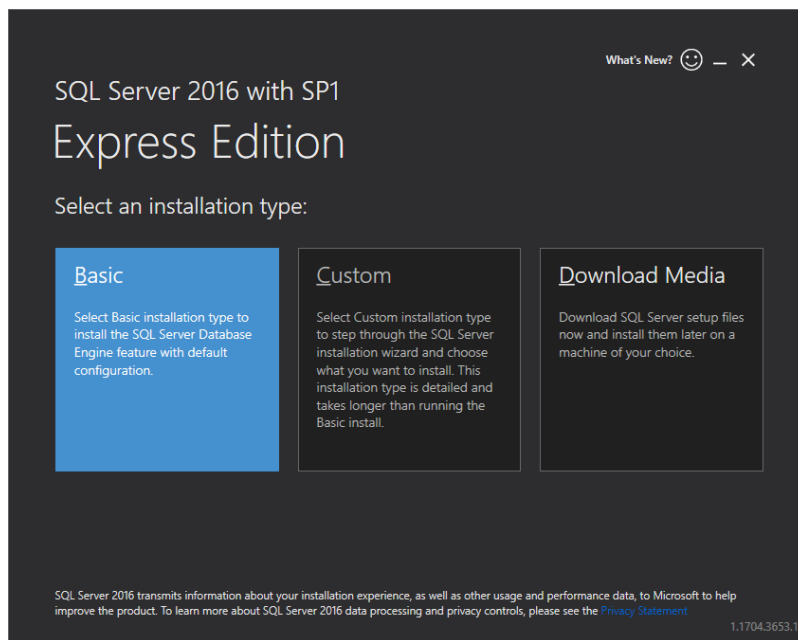
13. Select a Microsoft SQL Server, which will be used by the Control Center. This is an infrastructure example with a **single server** – the local machine also performs the role of a database server. Select the local SQL Server. Keep default database name, if you do not have a reason to change it.

If you do not have the Microsoft SQL Server already installed, click **Install SQL Server Express**. The button is visible if the SQL Server 2016 installation setup exists in the same folder as Control Center setup file.

The installation of Microsoft SQL Server 2016 Express will start after pressing the button. After the installation is done, resume with the installation of Control Center and select the newly installed SQL instance.

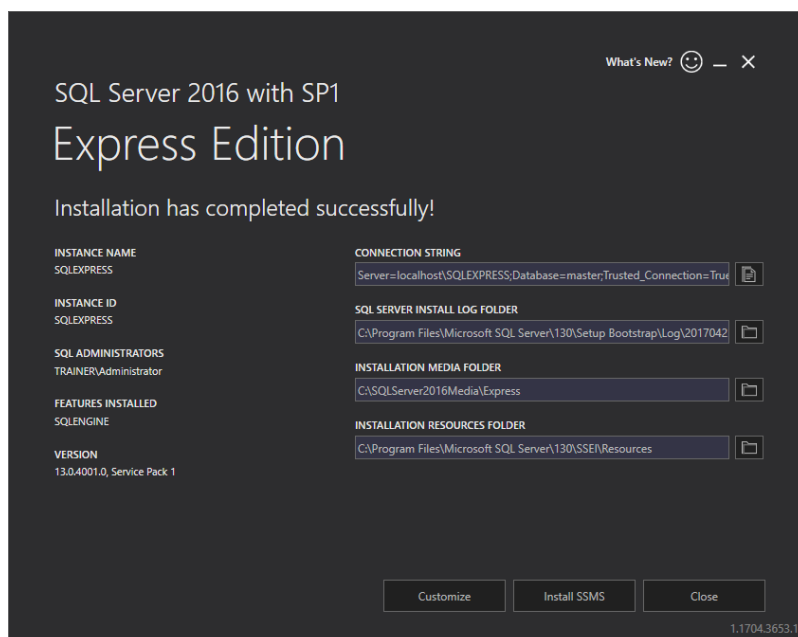
NOTE: Internet access is required for this step. This enables the installer to download all necessary components.

1. In the SQL Server 2016 installer, select **Basic** installation type.



2. Click **Accept** to accept the license terms.
3. Click **Install** to start the automated installation process. This might take several minutes.
4. (Optional step). Click **Install SSMS** to download and install **SQL Server Management Studio**. SQL Server Management Studio (SSMS) is an integrated environment that enables you to access, configure, manage, administer, and develop all SQL Server components.

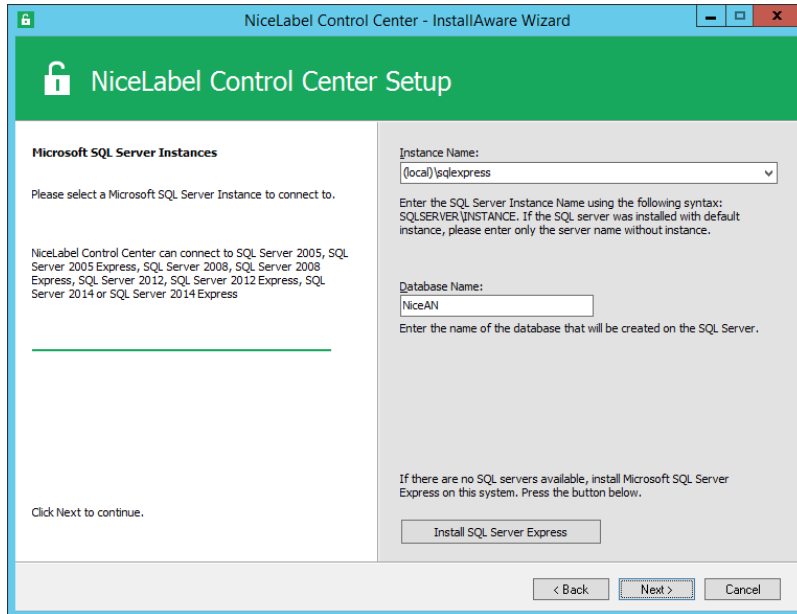
Click **Close**.



5. The **Instance Name** will be preconfigured to the following setting.

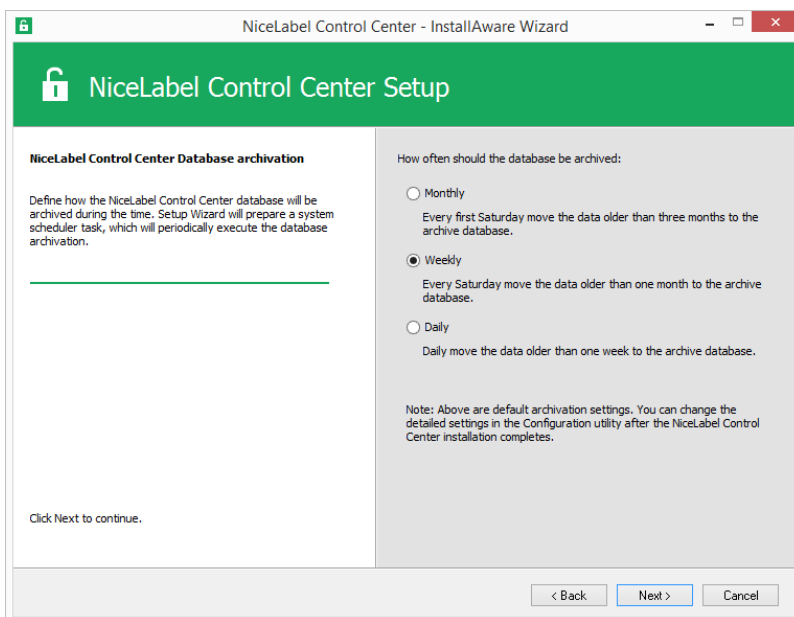
(local)\sqlexpress

6. Keep the database name. Click **Next**.



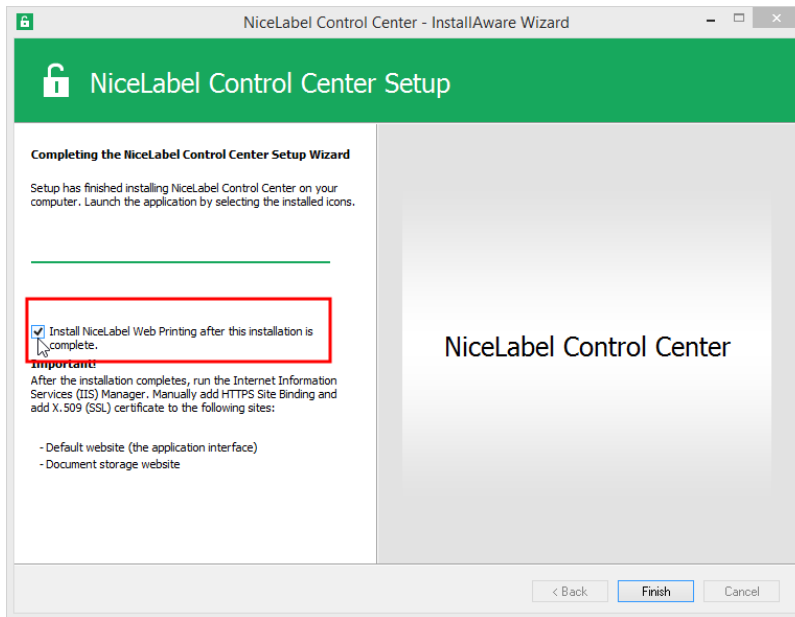
14. Accept the default time interval during which the old data is removed from the database. Click **Next**.

NOTE: You can fine-tune the archiving time interval and data retention at a later time using Windows Task Scheduler.



15. Click **Install**.

16. Make sure the option **Install NiceLabel Web Printing after this installation is complete** is enabled and click **Finish**.



See chapter [Installing Web Printing Site](#) from step 6.

NOTE: This option is visible, when Web Printing installer is found in the same folder.

4.2 Installing Web Printing Site

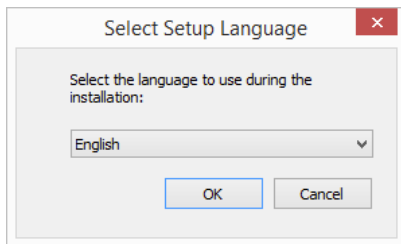
NOTE: The instructions below assume you are installing software from the DVD. If you have started the installer from within Control Center installation, continue with step 6.

To install the Web Printing site on the same computer as Control Center, do the following:

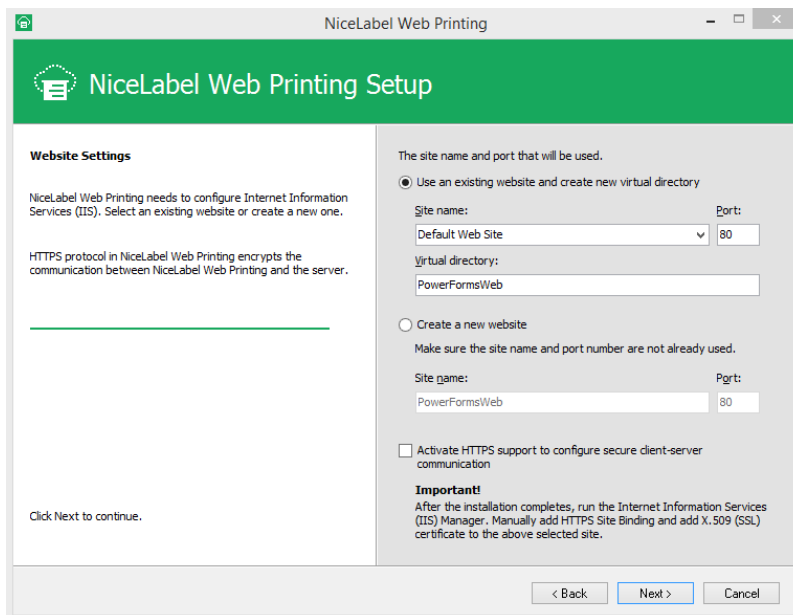
1. Log in to server using the user with local administrative permissions, such as local **Administrator** user account.
2. To ensure a complete installation, close all open applications before you start.
3. Insert the NiceLabel DVD.

NOTE: If the application menu does not start automatically, double-click `Start.exe`.

4. Select **Install NiceLabel LMS**.
5. Select **NiceLabel Web Printing**.
6. Select installation language from the drop-down list and click **OK**. Click **Next**.



7. Accept the license agreement. Click **Next**.
8. Enter user information. Click **Next**.
9. Accept a default folder where Web Printing files will be stored. Click **Next**.
10. Accept a default Start Menu folder into which shortcuts will be placed. Click **Next**.
11. In **Web Site Settings** step, accept default setting **Use existing web site and create new virtual directory**.



Click **Next**.

12. Click **Install**.
13. When the Web Printing setup is complete, leave the **Run NiceLabel Web Printing** check box selected. Click **Finish** and the **Login** page for Web Printing site will open in a browser.

The Web Printing site is now accessible at address:

`http://hostname/PowerFormsWeb`

Where `hostname` will display the name of your computer.

4.3 Installing Support For WebDAV

WebDAV (Web-based Distributed Authoring and Versioning) is a set of extensions to HTTP protocol. It provides a user framework for creating, changing and move documents on a server; typically a web server or a web share.

NiceLabel Control Center provides WebDAV access to the Document Storage files. All clients that interact with the Document Storage must have WebDAV support enabled.

TIP: Typically, the "clients" are NiceLabel Designer and NiceLabel Automation.

To ensure a successful connection between the client and WebDAV, make sure the following prerequisites are met on the client side:

- Windows 7, Windows 8/8.1 and Windows 10. WebDAV support is already installed and no further action is required.
- Windows Server 2008 R2 and 2012 R2. Enable **Desktop Experience** feature. See [details below](#).
- Windows Server 2016. Enable **Desktop Experience** and **WebDAV Redirector** features. See instructions on how to install WebDAV Redirector [below](#).

4.3.1 Enabling WebClient Service To Use "Automatic" Startup Type

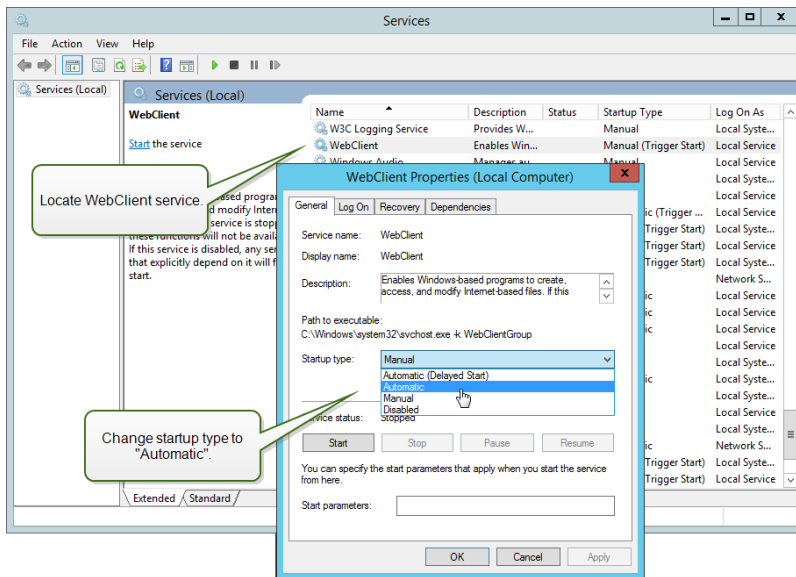
Windows operating system supports access to WebDAV shares using WebClient service. When this service is stopped, users have no access to WebDAV shares. In Windows Vista, 7, 8/8.1 and Windows 10, the service is enabled in Manual startup mode.

In Windows Server 2008, 2012 (including R2) and 2016 editions, the default setup does not have web client service. You need to install Desktop Experience package to add web client service.

To make sure the WebDAV support is always available, set the WebClient service startup type to **Automatic**.

Do the following:

1. Press Windows key (or <Ctrl> + <Esc>) to open the search.
2. Type in **Services** and run the Services window.
3. Scroll down in the list and locate the service **WebClient**.
4. Double click **WebClient** to open its properties.
5. In Startup, type combo box select **Automatic**.



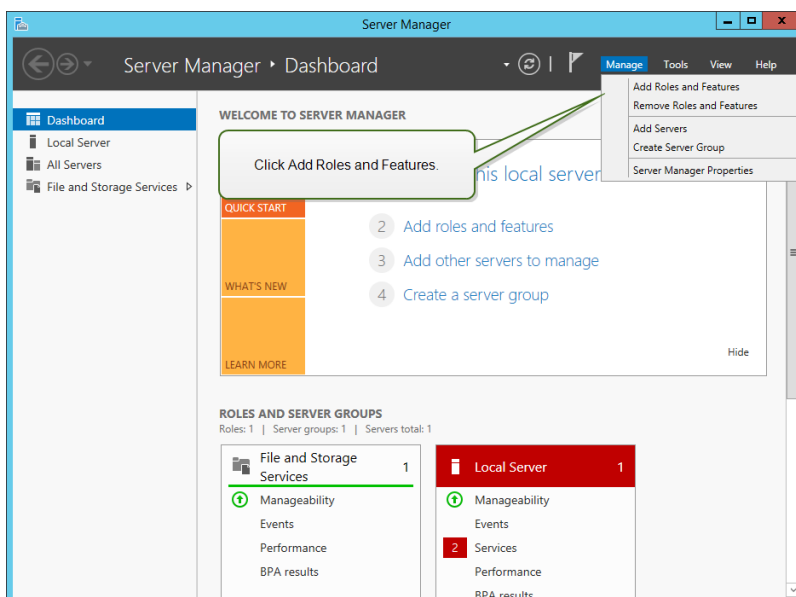
6. If the service is not running yet, click **Start** button.
7. Click **OK**.
8. Close **Services** window.

4.3.2 Installing Desktop Experience

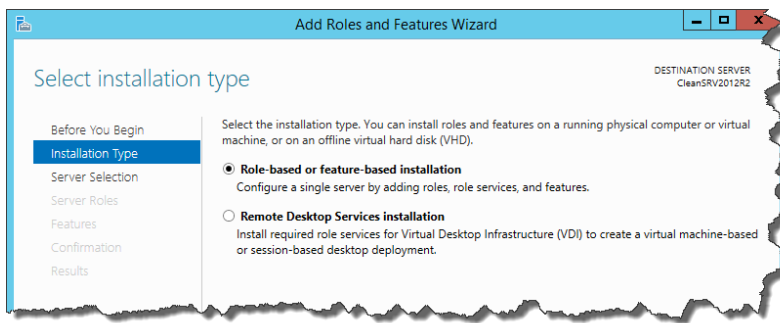
To install **Desktop Experience** feature on Windows Server operating system, do the following.

NOTE: These instructions are for Windows Server 2012 R2.

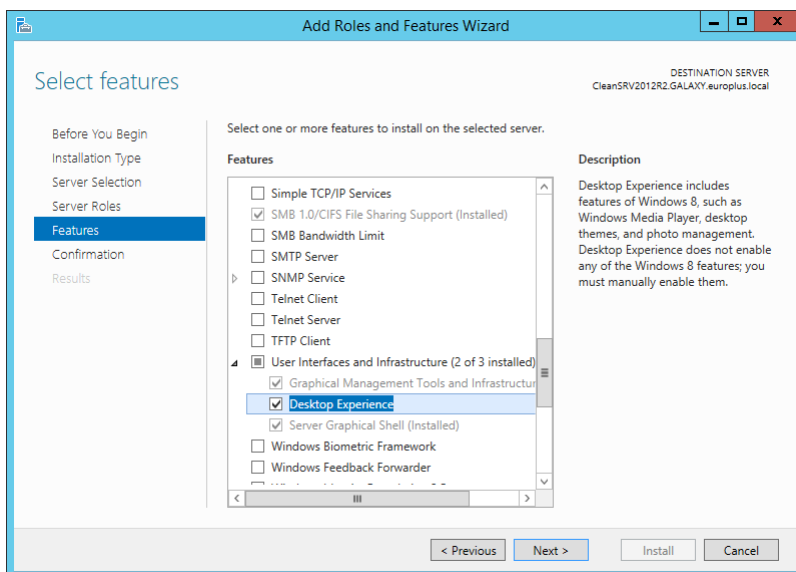
1. Start **Server Manager** from the **Start** screen.
2. Click **Manage**, then click **Add Roles and Features**.



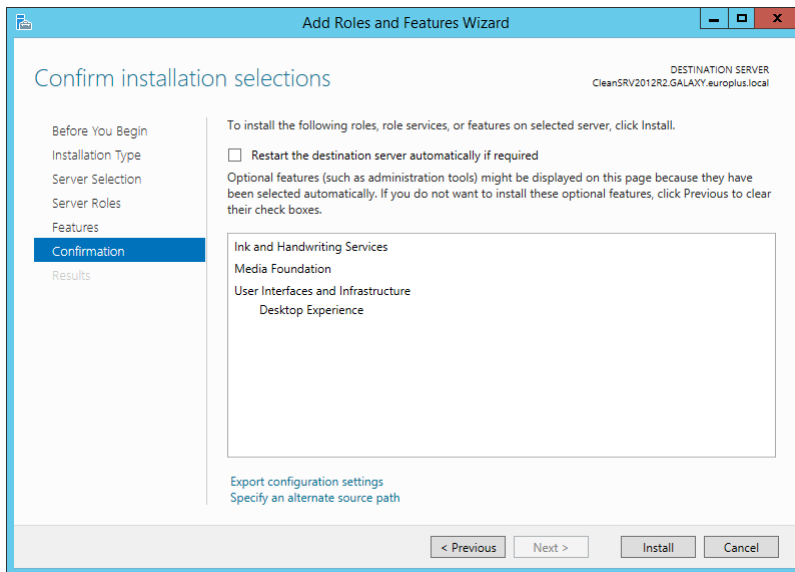
3. Select **Role-based or feature-based installation**. Click **Next**.



4. Select a local server from the server pool. Click **Next**.
5. The Desktop Experience feature is not a Server Role, so skip the Server Roles page by clicking **Next**.
6. In the Select Features section, expand **User Interfaces and Infrastructure** and check the **Desktop Experience** check box. Probably it will now ask you whether you also want to install the features required by Desktop Experience. Click the **Add Features** button to proceed. Now, click the **Next** button to proceed.



7. In the Confirmation section, optionally check the **Restart the destination server automatically if required** check box as the Desktop Experience feature will need a restart to complete. You can also manually restart the server after the wizard steps are complete.

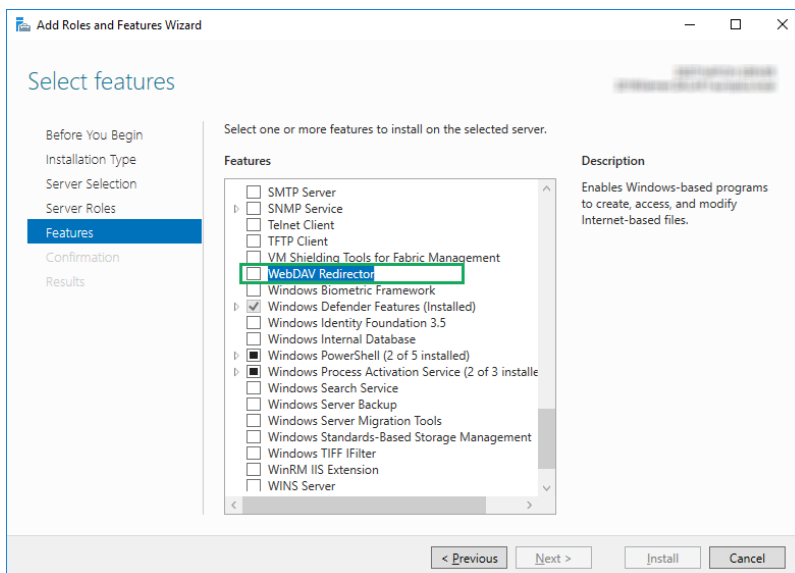


8. Wait while the features are being installed. You can also close the **Add Roles and Features Wizard** window – it will continue to run in the background.

4.3.3 Installing WebDAV Redirector

NOTE: These instructions are for Windows Server 2016.

1. Start **Server Manager** from the **Start** screen.
2. Open Manage menu and click **Add Roles and Features**.
3. Click **Features** tab.
4. Select **WebDAV Redirector** feature.



5. Click **Next** to proceed to the **Confirm installation selections** window.

6. Click **Install**. You can close the window while the feature is being installed.
7. Close **Add Roles and Features** window.

5 Activation

To activate the LMS Pro or LMS Enterprise license in the Control Center server, do the following:

1. Open a browser on a computer with access to the Internet.
2. Type in the URL to the Control Center.

`http://hostname/epm`

Where `hostname` in the URL is the name of your computer.

3. Go to **Administration tab > Licenses**.
4. Click the **Activate new product** link.
5. On **Activation** page, enter the required user information and the **License Key** that was provided with the product.

The screenshot shows the 'NiceLabel Control Center' interface. The top navigation bar includes 'Overview', 'Print Management', 'Document Storage', 'History', 'Reports', 'Automation', and 'Administration'. The left sidebar lists various administration options, with 'Licenses' selected. The main content area is titled 'Activation' and contains a form with two tabs: '1. User Information' and '2. Product Activation'. The form fields include: License Key (a grid of input boxes), Name, Company, Country (a dropdown menu currently showing 'United Kingdom'), and E-mail. There is a checkbox for 'Notify me about software updates' and a 'Next' button at the bottom right of the form. The footer of the page contains copyright information: '(C) 2006 - 2016 Euro Plus | www.nicelabel.com | All rights reserved.' and 'Version 17.0.0.306 Beta'.

6. Click **Next**.
7. **Registration Number** is generated automatically. Make sure the computer has an Internet connection and click **Finish** to complete the activation.

6 Accessing NiceLabel LMS

6.1 Access From Internal Network

Now that you have installed and activated NiceLabel LMS on the server, these are the access points for the server that you can access while you are in the same network as the server (note the local name of the server):

NOTE: In all examples, the `hostname` should be replaced with the name of your server.

- **NiceLabel Control Center**

```
http://hostname/EPM
```

- **NiceLabel Web Printing**

```
http://hostname/PowerFormsWeb
```

6.2 Access From Internet

Whenever you want users outside of your internal network to connect to your Web site, you have to publish the site on the Internet, no matter what you want to expose: Control Center itself or Web Printing.

You will need help from IT team in your company to set it up. There are different methods to publish a Web site on the Internet.

WARNING: Whenever you are publishing Web site on the internet, you are exposing your infrastructure to possible security attacks. Follow the security best practice guidelines to protect your Internet-facing Web server.

6.2.1 Port Forwarding

TIP: This might be the easiest method to implement.

- As the name suggest, you are forwarding all incoming requests on the public IP address to the internal computer, which is running NiceLabel LMS.
- IT administrator must configure the main router and/or firewall (that connects you to the Internet) to forward all incoming requests on port 80 to the port 80 on the internal computer `hostname`.
- The external user would visit your public IP address and see the Web Printing login page from computer `hostname`.

When connecting to your public IP address (this example shows 10.20.30.40 as the external IP address):

```
http://10.20.30.40/PowerFormsWeb
```

The users will actually get the content being served from Web Printing site.

- You need to be familiar with your public IP, so that you can send it to external users. The IP address can be static (always the same), or dynamic (the address changes after a defined time interval in h/s).

6.2.2 Other Methods

The methods of publishing a Web site on the Internet might also be using a reverse proxy in the DMZ, using VPN connections, and other. These methods are outside the scope of this document.

7 Support

7.1 Online Self-help

You can find the latest builds, updates, workarounds for problems and Frequently Asked Questions (FAQ) on the product web site at www.nicelabel.com.

Full version of the installation guides:

- [NiceLabel Control Center Installation Guide](#)
- [NiceLabel Web Printing Installation Guide](#)

For more information please refer to:

- Knowledge base: <https://www.nicelabel.com/support/knowledge-base>
- NiceLabel Support: <https://www.nicelabel.com/support/technical-support>
- NiceLabel Tutorials: <https://www.nicelabel.com/learning-center/tutorials>
- NiceLabel Forums: <https://forums.nicelabel.com/>

NOTE: If you have a Service Maintenance Agreement (SMA), please contact the premium support as specified in the agreement.

7.2 Contacting Technical Support

At some point, when you encounter a problem that you cannot solve by yourself, you may need to contact your support representative for additional assistance

<https://www.nicelabel.com/support/technical-support>

NOTE: If you have a Service Maintenance Agreement (SMA), please contact the premium support as specified in the agreement.

Before contacting support it would be very helpful, if you collected information about the problem, the computer and operating system, you are running NiceLabel software on. You can use the following checklist.

	Checklist
<input type="checkbox"/>	What happened? Write down exactly the error message that you get or make a screen shot of the error.
<input type="checkbox"/>	When was the error discovered for the first time?
<input type="checkbox"/>	What did you expect to happen?
<input type="checkbox"/>	Have you discovered the problem earlier?

- | | |
|--------------------------|---|
| <input type="checkbox"/> | Can the error be reproduced? |
| <input type="checkbox"/> | How often did the error occur? |
| <input type="checkbox"/> | Have you tried to use NiceLabel software this way earlier? |
| <input type="checkbox"/> | If your problem is coming and going, please describe circumstances and under what conditions the error appears. |
| <input type="checkbox"/> | Which version of NiceLabel software are you using? |
| <input type="checkbox"/> | Which version of NiceLabel was used to design the label? |
| <input type="checkbox"/> | Can you provide the files that you were using when the issue occurred (data files, configuration files, label files, etc.)? |
| <input type="checkbox"/> | Which printer are you using? |
| <input type="checkbox"/> | Which version of printer driver are you using? |
| <input type="checkbox"/> | Which operating system are you using? In which language? |
| <input type="checkbox"/> | Are you using firewall? Are all the required ports open? |
| <input type="checkbox"/> | Which version of Microsoft .NET framework is installed? |

Americas

+1 262 784 2456

sales.americas@nicelabel.com

EMEA

+386 4280 5000

sales@nicelabel.com

Germany

+49 6104 68 99 80

sales@nicelabel.de

China

+86 21 6249 0371

sales@nicelabel.cn

www.nicelabel.com

