

The logo for NiceLabel, featuring the word "NiceLabel" in white text on a dark blue rounded rectangular background. A small green circle with a white arrow pointing up and to the right is positioned at the top right corner of the dark blue rectangle.

NiceLabel

NiceLabel PowerForms Web 6.3

Release Notes

Rev-1407

Table of Contents

What's New in PowerForms Web?	2
Improved Web Embedding Capabilities.....	2
Enhanced API with postMessage Method	2
Token-based Authentication.....	2
New Form Application Features.....	2
Setting Object Properties.....	3
Using Font Names in Combo Box and List Box Objects	3
Setting the Initial State of an Object.....	4
New Label Template Features.....	5
Encoding RFID Tags	5
RFID EPC Encoding	5
Updated Application Identifiers for GS1 support	6
Support for Code-93 Barcode	6

What's New in PowerForms Web?

Improved Web Embedding Capabilities

Traditionally, NiceLabel PowerForms Web has been used as the builder for Web label-printing applications. You can rapidly create the application's user interface and the printing logic in the desktop designer and then run the application in the browser.

However, there is also a large segment of Web software-development companies who are capable of developing their own applications in-house and do not need NiceLabel's rapid application development (RAD) abilities to create the Web applications. What they need is a powerful print engine to print labels with data from their existing system. The print engine included with the PowerForms Web exposes its functionality through the application programming interface (API) so it can be used by third party applications.

The new version of PowerForms Web removes the demand of having the existing application and the PowerForms Web installed on the same server. You can have them installed on different servers and using different Web server technology. The new communication method is no longer seen as cross-site-scripting, which is considered a bad computer security practice and blocked by modern browsers.

Enhanced API with `postMessage` Method

PowerForms Web V6.3 provides a modern communication channel between the application and the print engine. PowerForms Web supports a `window.postMessage` API to exchange data between the websites even if they are running on different servers.

The `window.postMessage` method safely enables cross-origin communication. Normally, scripts on different pages are allowed to access each other if the pages that executed them are at locations with the same protocol (usually both HTTP), port number (80 being the default for HTTP), and host. `window.postMessage` provides a controlled mechanism to circumvent this restriction in a secure way.

Token-based Authentication

When the existing Web application wants to use the print engine within the PowerForms Web, it must first authenticate itself. There are already several authentication procedures available with PowerForms Web. There is a new possibility with token-based authentication.

The existing Web application calls an authentication service, passing the user name and password. The return is a time-limited token, which is used in the query parameter when communicating with the print engine. No user data is exposed in the URL to the print engine.

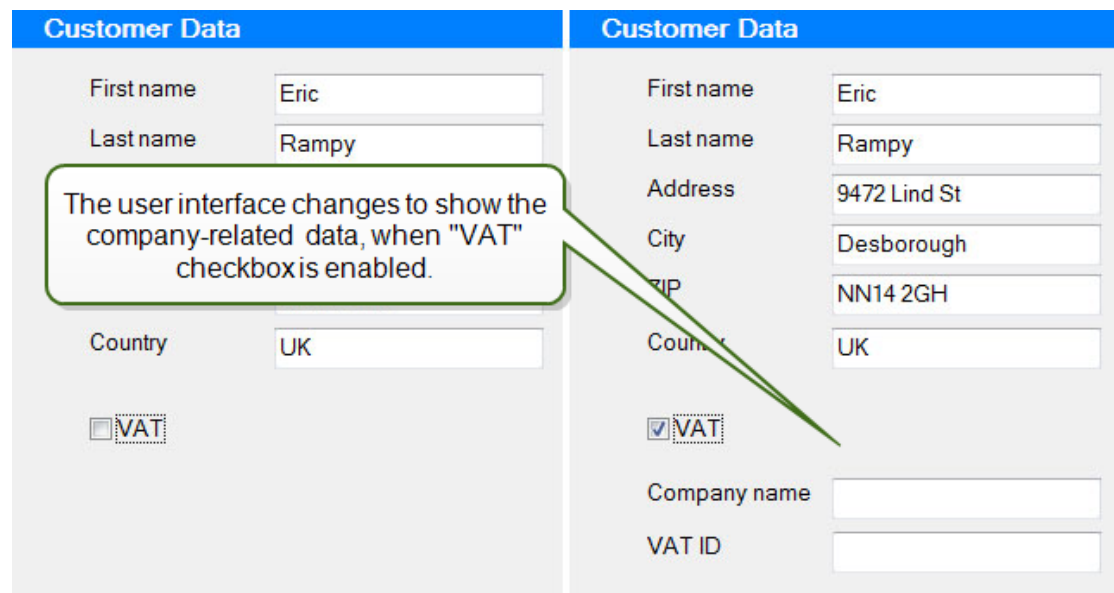
New Form Application Features

Note: You need NiceLabel PowerForms Desktop V6.3 designer to use the functionality presented in this chapter.

Setting Object Properties

The new action Set Object Properties allows you to modify the user interface and functionality of the form application while it is running.

You can create an application that will use a simplified user interface, but it can switch to a more advanced user interface, displaying more options.



Customer Data		Customer Data	
First name	Eric	First name	Eric
Last name	Rampy	Last name	Rampy
		Address	9472 Lind St
		City	Desborough
		ZIP	NN14 2GH
Country	UK	Country	UK
<input type="checkbox"/> VAT		<input checked="" type="checkbox"/> VAT	
		Company name	
		VAT ID	

Another example: the print button is disabled and the user cannot click it as long as there are problems with the entered data. When the problem has been resolved, the print button is enabled.

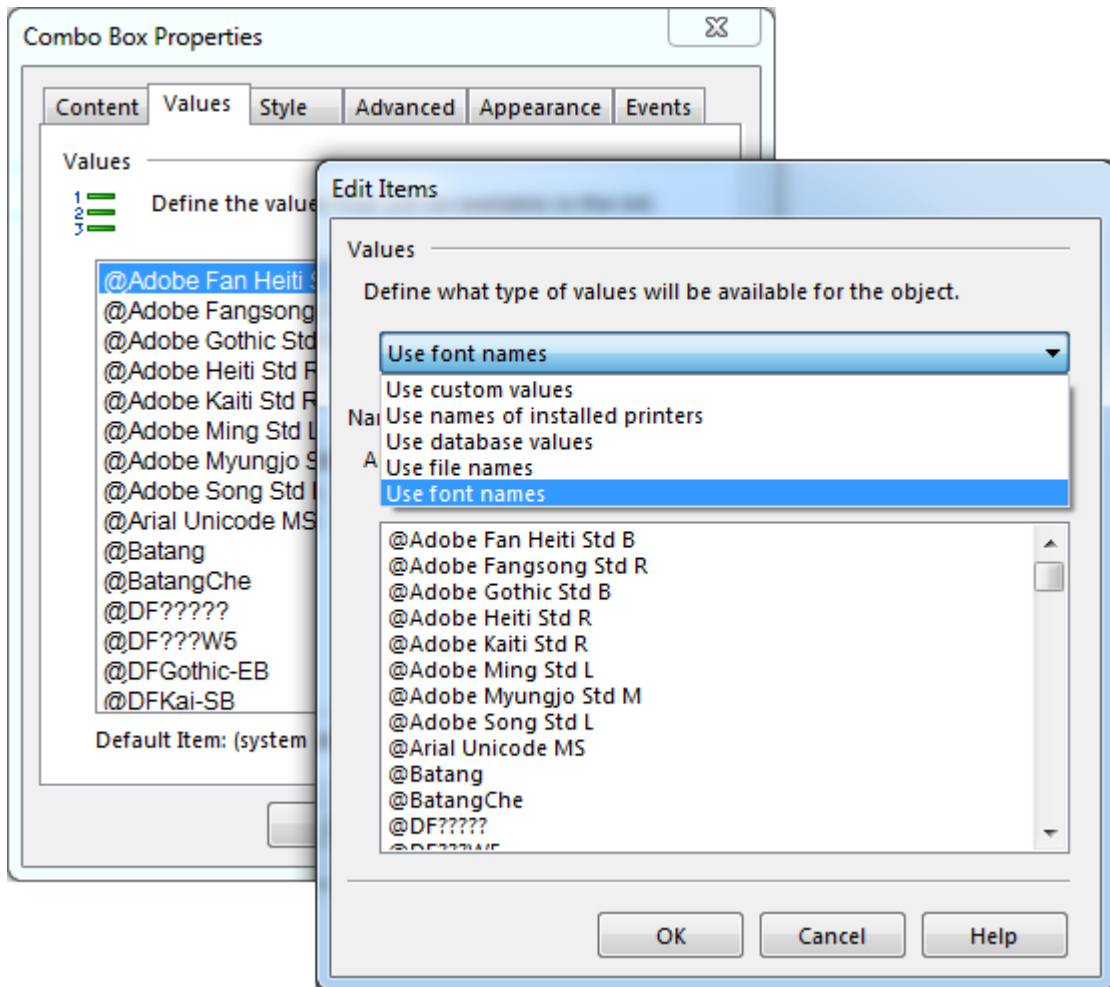
This is a powerful new feature that you can use to visually modify your applications while they are already running.

You can change the following object properties on-the-fly:

- Object position
- Object size
- Object enable/disable state
- Object visibility
- Object color
- Object font properties (name, color, size, style)

Using Font Names in Combo Box and List Box Objects

Combo box and list box objects have a new source of data that they can display. They can collect a list of fonts installed on the local computer and make them available for the selection.

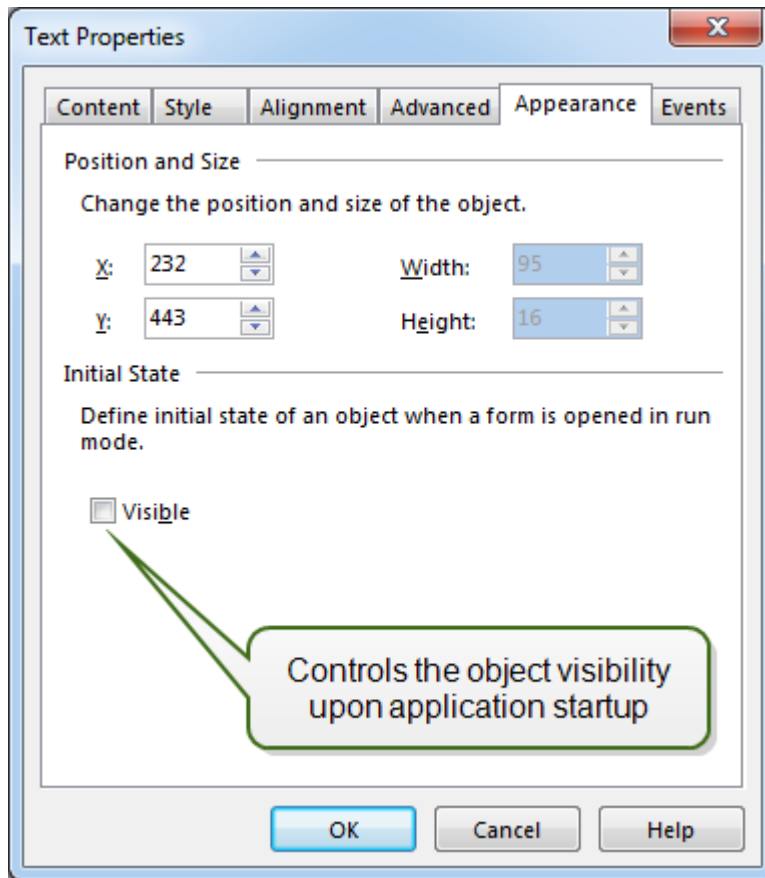


This feature is tightly connected to the new action **Set Object Properties**.

The user can select the font in the combo box and apply it to the objects while the application is running. You can change the font that is used in the button, or in the edit field, or in the text object.

Setting the Initial State of an Object

The form objects now support the visibility property. The objects can be visible or hidden, and you control it through the action **Set Object Properties**.



You will always see your objects in the design mode. However, when switching to runtime, the visibility depends on the logic within the application. You can also control the initial state of each object - whether the object should be visible when a form is started in the run mode or if it should be hidden.

New Label Template Features

Encoding RFID Tags

Some thermal printers can print the label and program the RFID tag embedded in the label. The new version of PowerForms Cloud adds the possibility to encode such an RFID tag. The requirement for this to work is the NiceLabel printer driver for your RFID-enabled printer.

As for NiceLabel desktop products, you configure the encoding directly in your label template. Make sure that the RFID tag selected in the template matches the RFID tag embedded in the label.

RFID EPC Encoding

Data can be written to the RFID tag in raw format or encoded using the EPM encoding standard. NiceLabel recognizes tags with EPC support and enables EPC data encoding for them.

The specification supports multiple encodings that define how the data is stored into the EPC tag, depending on the tag type. The data can be in ASCII, HEX, or numeric formats. On some RFID tags you can also lock the memory blocks or fields to prevent further changes.

Updated Application Identifiers for GS1 support

NiceLabel software has been updated with the changes from the GS1 General Specifications Version 14, January 2014.

New GS1 Application Identifiers are supported: AI(16) Sell by date, AI(713) National Healthcare Reimbursement Number (NHRN) - Brasil DRN, AI(8010) Component/Part Identifier (CPID) and AI(8011) Component/Part Identifier Serial Number (CPID SERIAL). AI(8007) International Bank Account Number (IBAN) has updated the length of the data.

Note: you need the application NiceLabel Pro V6.3 to be able to design a label with new Application Identifiers.

Support for Code-93 Barcode

Support for Code-93 barcode symbology is added. NiceLabel PowerForms Web is based on the new-generation of NiceLabel software, which is based on .NET framework. Code-93 barcode was initially not added, but based on the requests from the market it is now available in version 6.3.