

the professional  
labeling software

[www.nicelabel.com](http://www.nicelabel.com), [info@nicelabel.com](mailto:info@nicelabel.com)



# NiceMemMaster User Guide

English Edition

Rev-1011

© 2011 Euro Plus d.o.o.  
All rights reserved.  
[www.nicelabel.com](http://www.nicelabel.com)



Euro Plus d.o.o.  
Poslovna cona A 2  
SI-4208 Šenčur, Slovenia  
tel.: +386 4 280 50 00  
fax: +386 4 233 11 48  
[www.europlus.si](http://www.europlus.si)  
[info@europlus.si](mailto:info@europlus.si)



# Table of Contents

<b>Table of Contents</b> .....	<b>1</b>
<b>Welcome to NiceMemMaster</b> .....	<b>4</b>
<b>Setting Up the Application</b> .....	<b>5</b>
User Interface .....	5
Main Window.....	5
Setting the Folder Permissions .....	5
Customizing the Software .....	6
<b>Working with the Application</b> .....	<b>7</b>
Creating Memory Card Configuration File .....	7
Creating Memory Card Configuration File.....	7
Adding Objects to the Memory Card .....	7
Adding Fonts to the Memory Card .....	7
Adding Pictures to the Memory Card .....	8
Selecting Characters for Download.....	8
Selecting Font for Download .....	9
Using Types of Character Selection.....	9
Downloading Objects to the Memory Card.....	13
Downloading Objects to the Memory Card .....	13
Removing Objects from the Memory Card .....	13
Removing Objects from the Memory Card.....	13
Using Toolbox .....	14
Using Toolbox.....	14
<b>Technical Support</b> .....	<b>16</b>
Online Support.....	16
Contact Information.....	16

# Welcome to NiceMemMaster

The NiceMemMaster is software dedicated to preparing and downloading true type fonts and pictures to the memory cards installed in the thermal printers. Fonts and pictures that are downloaded to the memory card are treated as internal printer objects. This enables much faster printing, because there is no need to transfer text or pictures to the printer at print time.

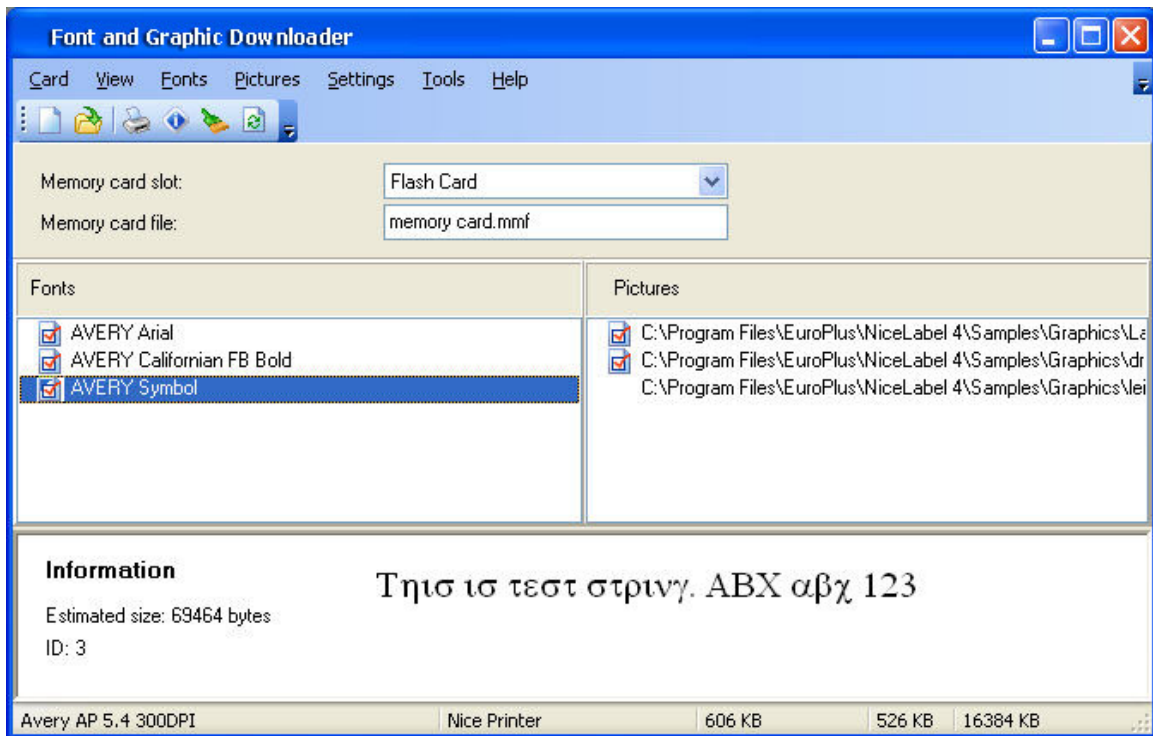
The application can:

- Add, edit and view data, prepared for download on memory cards.
- Check the available memory card space before downloading.
- Share the information about the contents of the memory card with the label designer.
- Print the downloaded data from the memory card.

# Setting Up the Application

## User Interface

### Main Window



The main window

## Setting the Folder Permissions

Before you can use the application make sure you have the write access permissions to the following folders:

- The default folder for storing labels (Tools -> Options -> General -> Folders -> Labels)
- The folder where your operating system installs the printer drivers.  
For Windows XP the printer folder is the following  
"C:\WINDOWS\system32\spool\drivers\W32X86\3"

When you select fonts and graphics for download to the memory card, the application stores this information in the .MMF files into both folders. If you forget to change the

access permissions for the folders, the application will prompt you for the necessary changes.

If you are using the application under Windows Vista, the application that performs the initial installation will be hidden from you. You will still be prompted to allow the installation by the UAC (User Account Control). You should accept this installation, so that Windows Vista can automatically install memory cards.

---

## Customizing the Software

To change the preferences of the application, do the following:

1. Select **Options** command in the Tools menu.  
The **Options** dialog box opens.
2. You can change the options regarding the default folders and test string.

To customize the menus and toolbars, do the following:

1. In the **Tools** menu, hover over **Interface**, and select **Customize**.  
The **Customize** dialog box will open.
2. Make modifications to the settings.
3. Click on the **OK** button.

### **Note:**

You can also change the positions of the toolbars on-screen. Just drag them to the new position.

# Working with the Application

---

## Creating Memory Card Configuration File

### Creating Memory Card Configuration File

Memory card configuration file stores the information, which objects are currently present on the memory card. Each configuration file is linked to some thermal printer. When you are designing label in the label designer, the memory card configuration file provides the information about downloaded objects. The label designer then knows which objects can be recalled from the memory card.

To create new memory card configuration file, do the following:

1. Select the command **Printer Selection** in the Card menu.  
The dialog box **Select Printer** opens.

#### Note:

You can also click on the  icon in the toolbox.

2. Select the printer from the list. Make sure to select the printer driver NiceDriver.
3. Select the **Memory card slot** type from the list.

#### Note:

The available card slot types change accordingly to the selected printer.

4. Select the command **New** from the Card menu.

#### Note:

You can also click on the  icon in the toolbox.

5. Type the name of the memory card configuration file and click on the **Save** button.  
The **Card Setup** dialog box opens.
6. Enter the description of the memory card (optional) and select the proper card size.
7. Click on the **OK** button.

You have created an empty memory card configuration file.

You can start selecting the fonts and pictures to be downloaded to the memory card.

---

## Adding Objects to the Memory Card

### Adding Fonts to the Memory Card

To add fonts to the memory card, do the following:

1. Create you memory card configuration file.
2. Select the command **Add** in the Fonts menu.  
The **Open** dialog box opens.
3. Select the font you want to download.
4. Select the characters from the font.

**Note:**

This step is not necessary for thermal printers, that can download the true type files to the memory card.

5. Click on the **OK** button to close the **Font Data** dialog box.  
You can preview the selected font in the preview area.
6. Repeat the steps from step 2 until 5 to select additional fonts.
7. Make sure the printer is connected to the computer.
8. Select the command **Download All** from the Card menu.  
The fonts are downloaded to the printer and stored to the memory card. You can use them on your label.

### **Adding Pictures to the Memory Card**

To add pictures to the memory card, do the following:

1. Create you memory card configuration file.
2. Select the command **Add** in the Pictures menu.  
The **Open** dialog box opens.
3. Select the picture from the hard drive you want to download.  
You can preview the selected picture in the preview area.
4. Repeat the steps from step 2 and 3 to select additional pictures.
5. Make sure the printer is connected to the computer.
6. Select the command **Download All** from the Card menu.  
The pictures are downloaded to the printer and stored to the memory card. You can use them on your label.

### **Selecting Characters for Download**

If your printer does not support downloading of the whole font in the memory card, individual characters are downloaded as pictures. Characters are downloaded in the selected point size.

**Note:**

You can download characters from the whole font. But to save the space in the memory card you can select only the characters that will really be used on the label.

To select the characters for downloading, do the following:

1. Create you memory card configuration file.
2. Select the command **Add** in the Fonts menu.  
The **Font** dialog box opens.

3. Select the font you want to download.  
Also select the font style and size.

**Note:**

The font can be downloaded only in the selected point size. If you require different font size as well, you will have to download the fonts again and select different point size.

4. Click on the **OK** button.  
The **Font Data** dialog box displays with the information about the selected font.
5. Click on the **Characters** button.  
The **Select Characters** dialog box appears where you can select the characters for downloading.

**Note:**

The **Select Characters** dialog box has two different outlooks, depending on the selected printing.

Click on the **Related Topics** button for more information about this step.

4. Click on the **OK** button to close the **Select Characters** dialog box.
5. Click on the **OK** button to close the **Font Data** dialog box.

**Selecting Font for Download**

To select the font for downloading, do the following:

1. Create you memory card configuration file.
2. Select the command **Add** in the Fonts menu.  
The **Font** dialog box opens.
3. Select the font you want to download.  
The **Font Data** dialog box will open.

**Note:**

You can select the true type font file (.TTF) or the font in selected point size. The selection depends on the functionality of your thermal printer. Not all printers can download the true type file to the memory card.

4. If you could not select the true type file (.TTF), click on the **Select Characters** dialog box and select characters you want to download.  
Click on the **Related Topics** button for more information about this step.
5. Click on the **OK** button to close the **Select Characters** dialog box.
6. Click on the **OK** button to close the **Font Data** dialog box.

**Using Types of Character Selection**

There are two types of character selections.

1. Support for multi-lingual Unicode characters.
2. No support for multi-lingual Unicode characters.

**Note:**

The selection of the type is done automatically based on the functionality of your thermal printer. Not all thermal printers can work with multi-lingual data.

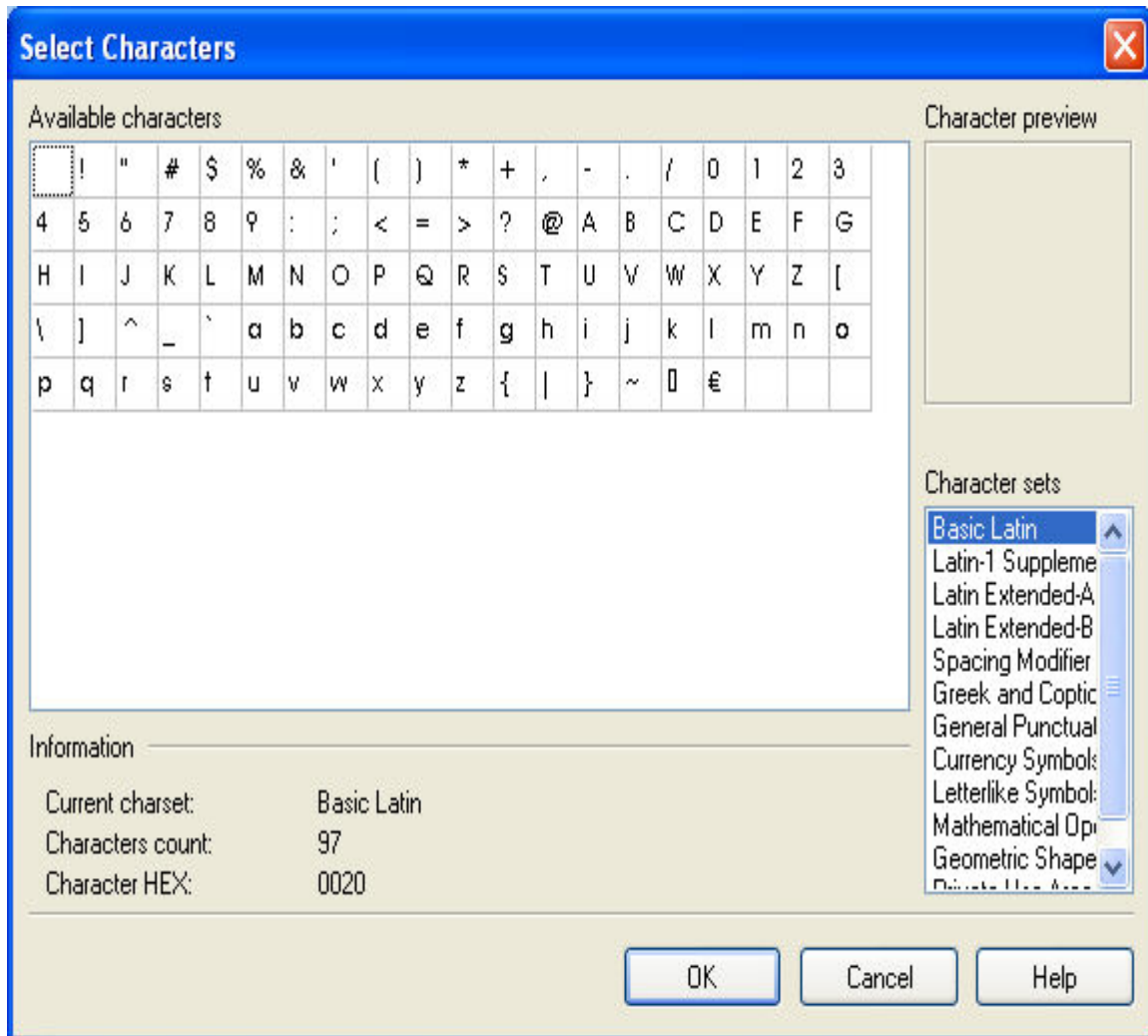
The selected memory card slot also has the influence on the font download mode. The printer might allow downloading the true type font files to the printer when one memory slot is used, but not for some other memory slot.

**FIRST TYPE**

The dialog box is divided into four panes.

- **Character sets:** Choose among the character sets that are available in the true type font. If you have Unicode font, there will be many available character sets. Only one character set can be used at a time.
- **Available characters:** The list of characters from the selected character set is displayed here. Select one or more characters to be downloaded. Use standard Windows selection shortcuts.
- **Information:** More information about the selected character set and selected character is available here.
- **Character preview:** Currently selected character is magnified in this pane so you can look at it better.

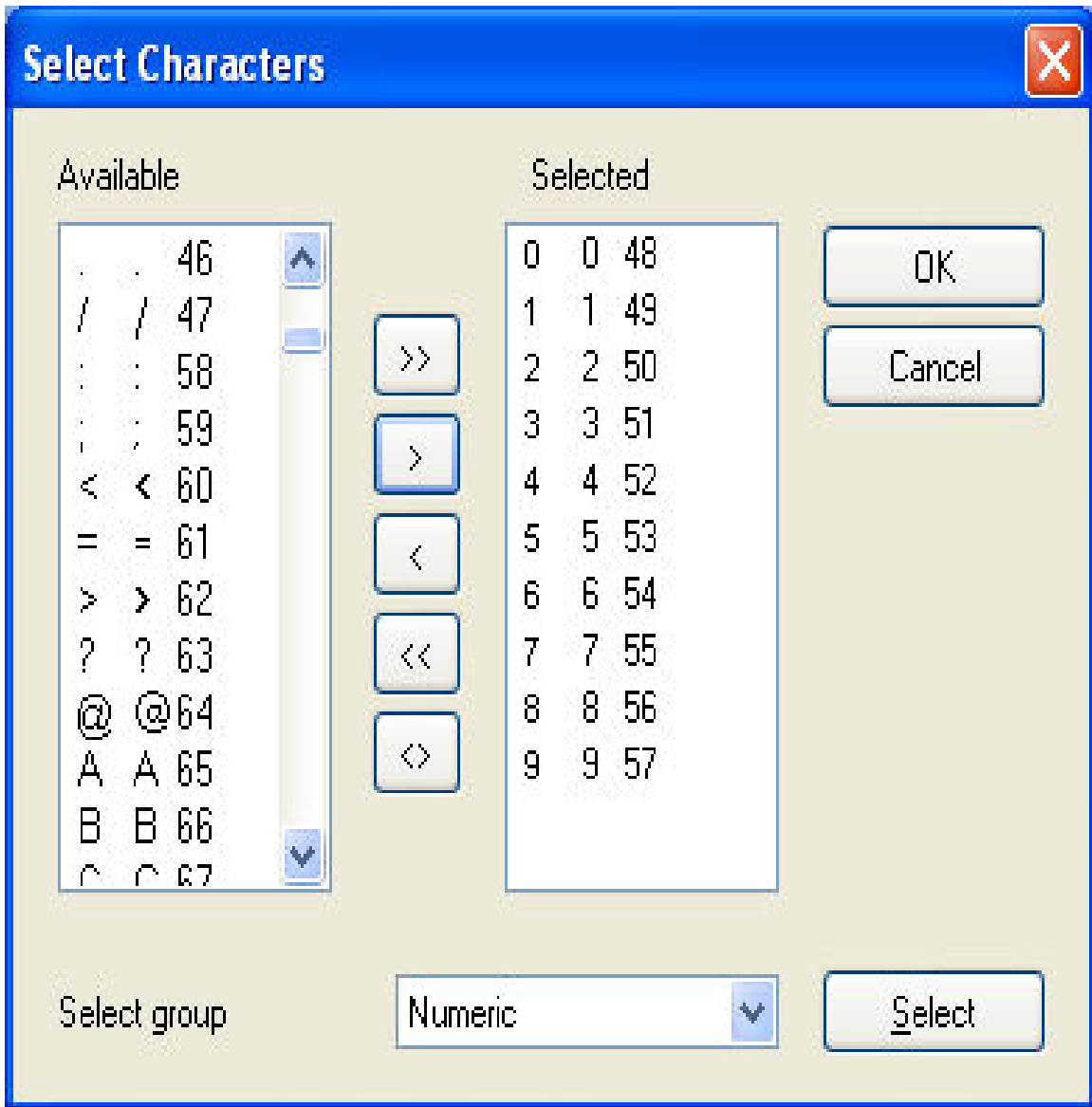
When you have selected appropriate character set and chosen among the characters to be downloaded, click on the **OK** button to proceed.



Select Character dialog box

**SECOND TYPE**

There are two list boxes with characters. You can move them from one to another using buttons in between. In both list boxes there are three columns. In first there is character in selected font. In second is ASCII representation and in third it is character number.



Character selection dialog box

**Available list box:** In this list box are all characters that are available in selected font and are not already selected.

**Selected list box:** All characters, which will be downloaded to printer, are in this list box.

**Select group:** Select the group from the combo box to automatically select a group of characters in the list.

**Note:**

Some printers do not support all characters. Unsupported characters are painted red. You can still select them, but they will not be downloaded to the memory card.

---

## Downloading Objects to the Memory Card

### Downloading Objects to the Memory Card

The defined objects can be downloaded each at a time, or all at the same time. It depends on the selected thermal printer.

To download all objects to the memory card, do the following:

1. Select the **Open** command in the Card menu.

**Note:**

You can also click on the  button in the toolbox.

2. Select the memory card file that contains the objects you want to download to the memory card and click on the **Open** button.
3. Make sure the printer is connected to the computer.
4. Select the command **Download All** in the Card menu.

To selectively download objects to the memory card, do the following:

1. Select the **Open** command in the Card menu.

**Note:**

You can also click on the  button in the toolbox.

2. Select the memory card file that contains the objects you want to download to the memory card and click on the **Open** button.
3. Make sure the printer is connected to the computer.
4. Select the object you want to download to the memory card (font or picture).
5. Select the command **Download** from the Fonts or Pictures menu.  
The object is downloaded to the memory card.
6. Repeat the steps 4 and 5 for the other objects you want to download.

---

## Removing Objects from the Memory Card

### Removing Objects from the Memory Card

Once the object have been downloaded to the memory card, you cannot selectively remove them on all thermal printers. It depends on the printer.

If the printer does not support selective object removal, the only method is to format the memory card and download again all the objects that you still need.

Do the following:

1. Select the **Open** command in the Card menu.

**Note:**

You can also click on the  button in the toolbox.

2. Select the memory card file that contains the objects you want to remove from the memory card and click on the **Open** button.
3. Make sure the printer is connected to the computer.
4. Select the command **Format** in the Card menu.  
The contents of the memory card will be erased.

**Note:**

You can also click on the  icon in the toolbox.

If the printer does support the selective object removal, do the following:

1. Select the **Open** command in the Card menu.

**Note:**

You can also click on the  button in the toolbox.

2. Select the memory card file that contains the objects you want to remove from the memory card and click on the **Open** button.
3. Select the object you want to remove from the memory card (font or picture).
4. Select the command **Delete** from the Fonts or Pictures menu.  
The object is removed from the list.
5. Repeat the steps 3 and 4 for the other objects you want to remove.

---

## Using Toolbox

### Using Toolbox

Use the toolbox to have quick access to shortcuts for the commands

If you do not see the toolbox, select the command Toolbox from the View menu. The toolbox will display under the menus.

**Note:**

You can change the position of the toolbox and dock to any other position.





These are the buttons in the toolbox:



**Create new memory card.**



**Open existing memory card.**

	<b>Select printer where you want to download objects.</b>
	<b>Display the information about the memory card.</b>
	<b>Format the memory card in the selected memory slot.</b>
	<b>Reload the contents of the memory card. Send all objects to the memory card.</b>

# Technical Support

---

## Online Support

You can find the latest builds, updates, workarounds for problems and Frequently Asked Questions (FAQ) on the product web site at [www.nicelabel.com](http://www.nicelabel.com). If you cannot solve the problem on your own, please contact your local vendor or representative offices listed in the topic [Contact Information](#).

For more information please refer to:

- Support FAQ: <http://kb.nicelabel.com>
- NiceLabel FAQ: [www.nicelabel.com/Learning-center/Sales-FAQ](http://www.nicelabel.com/Learning-center/Sales-FAQ)
- NiceLabel Tutorials: [www.nicelabel.com/Learning-center/Tutorials](http://www.nicelabel.com/Learning-center/Tutorials)
- NiceLabel Forums: [forums.nicelabel.com](http://forums.nicelabel.com)

---

## Contact Information

### Head Office

#### Euro Plus d.o.o.

Poslovna cona A 2  
SI-4208 Šenčur  
Slovenia  
Tel: +386 4 280 50 00  
Fax: +386 4 233 11 48  
[support@nicelabel.com](mailto:support@nicelabel.com)  
[www.nicelabel.com](http://www.nicelabel.com)

### North American Office

Niceware International, LLC.  
200 South Executive Drive, Suite 200  
Brookfield, Wisconsin 53005  
USA  
Tel: (888) 894-NICE (6423)  
Fax: (262) 784-2495  
[support@nicewareintl.com](mailto:support@nicewareintl.com)  
[www.nicewareintl.com](http://www.nicewareintl.com)

**German Office**

NiceLabel Germany GMBH  
Liebknechtstr. 29  
63179 Obertshausen  
Germany  
Tel: +49 (0)6104 405 400  
[support@nicelabel.de](mailto:support@nicelabel.de)  
[www.nicelabel.de](http://www.nicelabel.de)

**China Office**

GARDEN BUSINESS CENTER  
Julu Rd. 889, Building 23  
Office 8311  
Shanghai 200040, PR China  
Tel: +21-62490371  
Fax: +21-62490372  
[support@nicelabel.cn](mailto:support@nicelabel.cn)  
[www.nicelabel.cn](http://www.nicelabel.cn)