

the professional  
labeling software

[www.nicelabel.com](http://www.nicelabel.com)  
[info@nicelabel.com](mailto:info@nicelabel.com)



# NiceLabel Certificate Date Issue Patch

## Installation guide

Version 20090130-1

© 2009 Euro Plus. All rights reserved.  
[www.nicelabel.com](http://www.nicelabel.com)



**Head Office**

Euro Plus d.o.o.  
Ulica Lojzeta Hrovata 4c  
SI-4000 Kranj, Slovenia  
Tel.: +386 4 280 50 00  
Fax: +386 4 233 11 48  
[www.europlus.si](http://www.europlus.si)  
[info@europlus.si](mailto:info@europlus.si)

# Index

<b>1</b>	<b>Problem Description .....</b>	<b>3</b>
<b>2</b>	<b>Installing the Patch .....</b>	<b>4</b>
<b>3</b>	<b>Patching the Network Edition .....</b>	<b>6</b>
3.1	<i>Server Upgrade.....</i>	6
3.2	<i>Client Patch.....</i>	6
<b>4</b>	<b>Patching the Enterprise Edition .....</b>	<b>7</b>
<b>5</b>	<b>Patching the Developer Edition .....</b>	<b>8</b>
<b>6</b>	<b>Technical Support .....</b>	<b>9</b>
<b>7</b>	<b>Additional Information.....</b>	<b>10</b>

# 1 Problem Description

NiceLabel products include protection, which assures that their components are authentic. As of version 5.1, we included a digital signature to all executable modules and NiceLabel is verifying the validity of the digital signature.

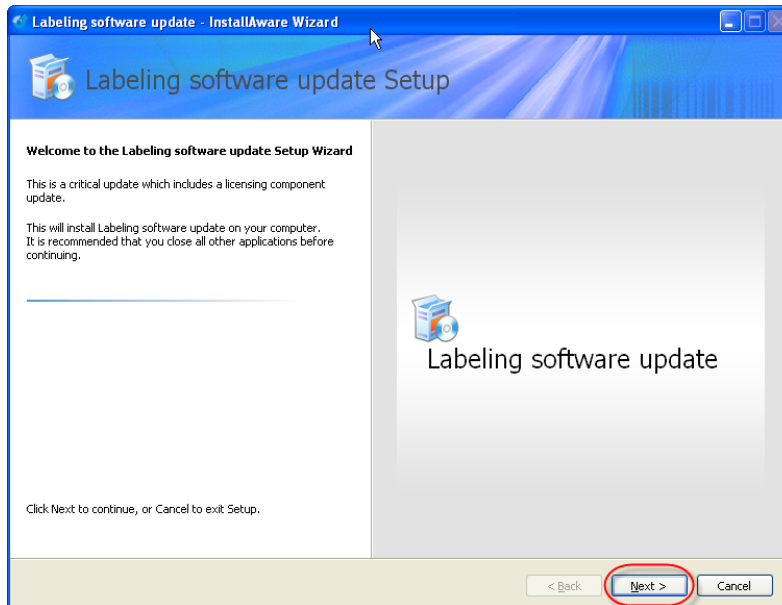
Because the digital signature used to sign NiceLabel executable files expires on April 8<sup>th</sup>, 2009, this check will fail after this date – **resulting in NiceLabel software NOT running after this date.**

If you are using NiceLabel Express/Pro/Suite version of the software or any higher version (Enterprise series), this issue concerns you.

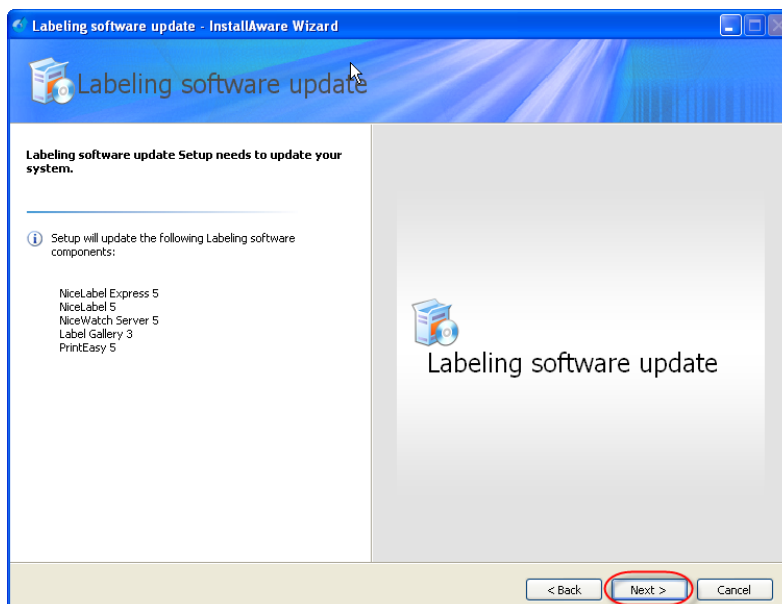
## 2 Installing the Patch

Follow these installation steps:

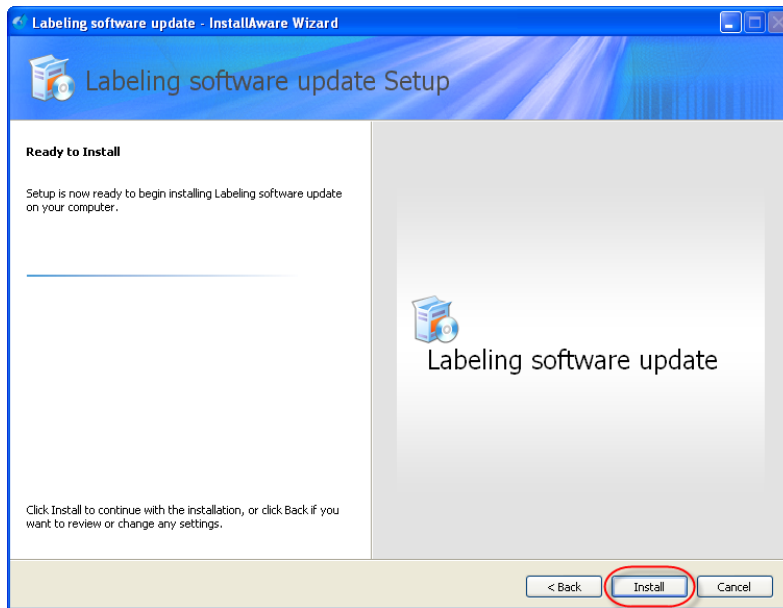
1. Download the installation from the [Web](#).
2. Double click on the downloaded file **Labeling software update.exe** to start the installation of the NiceLabel patch.
3. Select Next



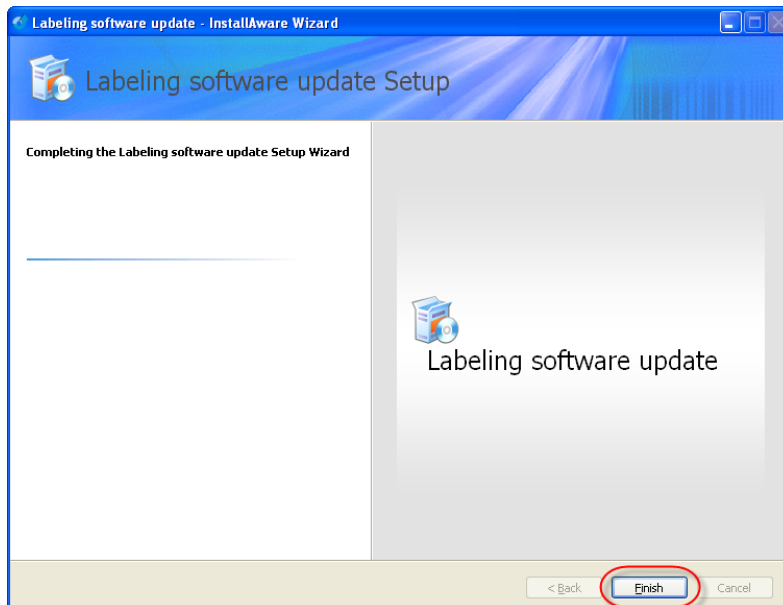
4. Select Next



5. Select Install



6. Select Finish



## 3 Patching the Network Edition

The Network Edition has a few options in how to perform the patching. A server upgrade is recommended as a long-term solution, but involves slightly more system downtime, which is not acceptable for some users. Therefore a faster client-patch option is available, but requires some consideration as described below.

### 3.1 Server Upgrade

1. Install the Suite Network Upgrade
2. Individually upgrade your clients
  - a. Use the network upgrade at \\<server>\<share>\<installation>.exe  
**or**
  - b. Use the patch as described in *Installing the Patch*.

**Note:** If you upgrade the server and simply patch the clients, there may be some unexpected issues with software version differences. It is recommended that an upgrade of the server is accompanied by an upgrade of clients

### 3.2 Client Patch

1. Patch every client as described in *Installing the Patch*.

**Note:** All installations from the server share \\<server>\<share>\<installation>.exe performed at a later time will require the application of a patch to the client.

## 4 Patching the Enterprise Edition

Patching the Enterprise Edition is performed by individual client patches, as the client itself is the only affected component.

For more information, see *Installing the Patch*.

## 5 Patching the Developer Edition

The Developer Edition as such is not affected by the digital signature dating issue. However, several users of the Developer Edition use the Label Designer for their label design. This designer should be patched as described in *Installing the Patch*.

## 6 Technical Support

For any issue or question contact your local reseller or NiceLabel technical support (<http://www.nicelabel.com/Support/Request-Support>).

## 7 Additional Information

NiceLabel digital signature patch can also be executed on installations where the patch is not necessary. This patch allows you to check if your current software build of NiceLabel requires the update or not.

The patch can be run several times. In case you already have the corrected software build, the patch will inform you with a pop-up window, and the patch installation will be aborted.